

# CERTIFICATE OF LOCATION OF GOVERNMENT CORNER

NORTH QUARTER Corner of Section 16, Township 102 N, Range 40 W, 5th P.M.

STATE OF MINNESOTA, County of NOBLES

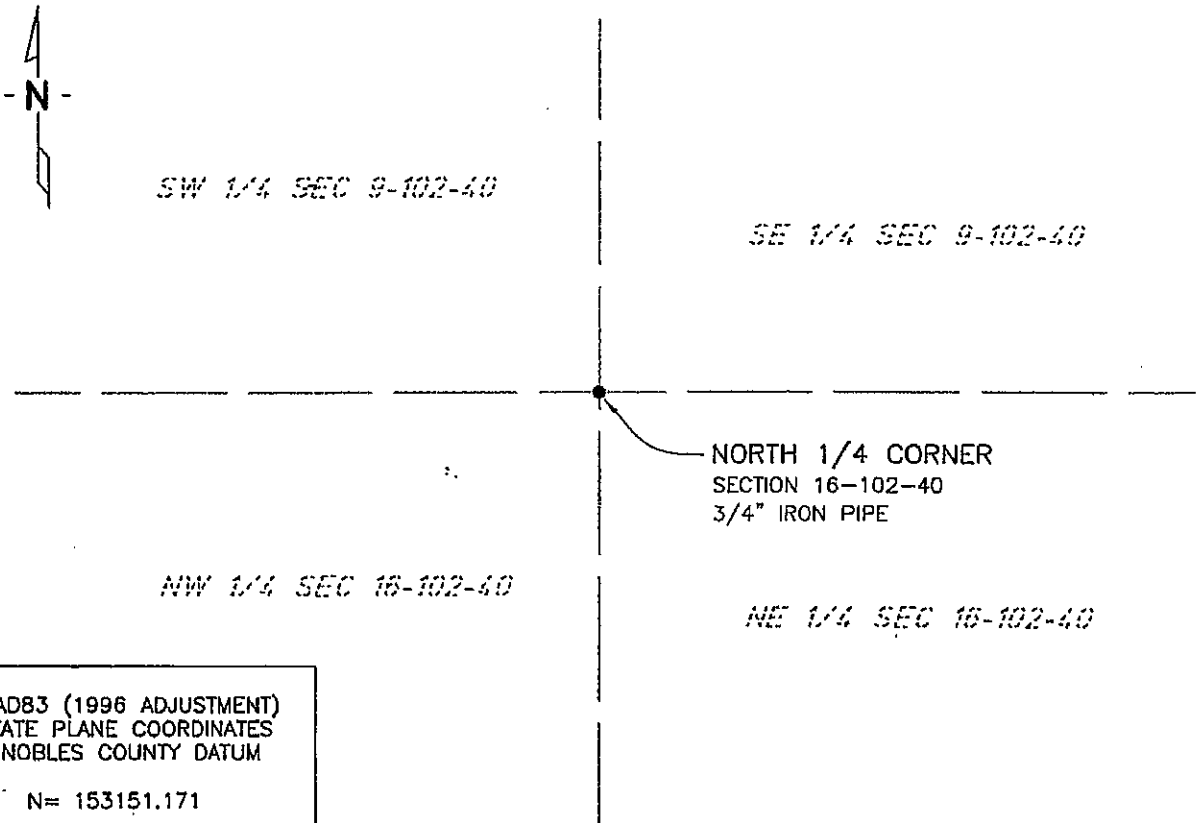
At the corner location shown on the sketch:

On 7/16/03 found a 3/4" IRON PIPE  
DATE

left monument as found,  lowered monument,  removed monument (explain)

On \_\_\_\_\_ placed a \_\_\_\_\_  
DATE

### SKETCH OF REFERENCE TIES



NAD83 (1996 ADJUSTMENT)  
STATE PLANE COORDINATES  
NOBLES COUNTY DATUM

N= 153151.171  
E= 581125.417

BOOK: 110 PG. 43  
I:\NOBLS\CERTIFICATES\2005\CAD\N16-102-40

Statement of evidence relative to this corner location is on back of page.

I hereby certify that this document and the data contained herein was prepared by me or under my direct supervision.

Janele Fowlds 4-24-06  
JANELE FOWLDS DATE

Registration No. 26748

- Land surveyor,  Professional Engineer
- County Surveyor,  County Engineer

### OFFICE OF THE COUNTY RECORDER

County of \_\_\_\_\_

I hereby certify that this document was filed in the Co. Recorders office at \_\_\_\_\_ M. on the \_\_\_\_\_ day of \_\_\_\_\_ A.D., 19\_\_\_\_

County Recorder \_\_\_\_\_

By \_\_\_\_\_, Deputy

DOCUMENT NO. \_\_\_\_\_

Statement of Evidence

North Quarter Corner Section 16, Township 102 North, Range 40 West

Original Notes

- 1892 Nobles County Highway Department records show a post being set.
- 1980 Nobles County Highway Department records show a post with the following ties:  
Nail & Cap in Power Pole – South 32.73’  
To Guy Wire – Southwest 53.35’  
To Guy Wire – Southeast 53.40’
- 2003 On July 16, Bolton & Menk, Inc., Mankato, found a 3/4" iron pipe 1.2 feet below surface.

The evidence is not conclusive as to the true corner location, however the occupational and collateral evidence suggest that this is a reasonable location as to the corner. Additional information regarding the preparation of this certificate can be obtained by contacting: Bolton & Menk, Inc., Mankato, MN.