

CERTIFICATE OF LOCATION OF GOVERNMENT CORNER

NORTH QUARTER Corner of Section 17, Township 102N, Range 40W, 5TH P.M.

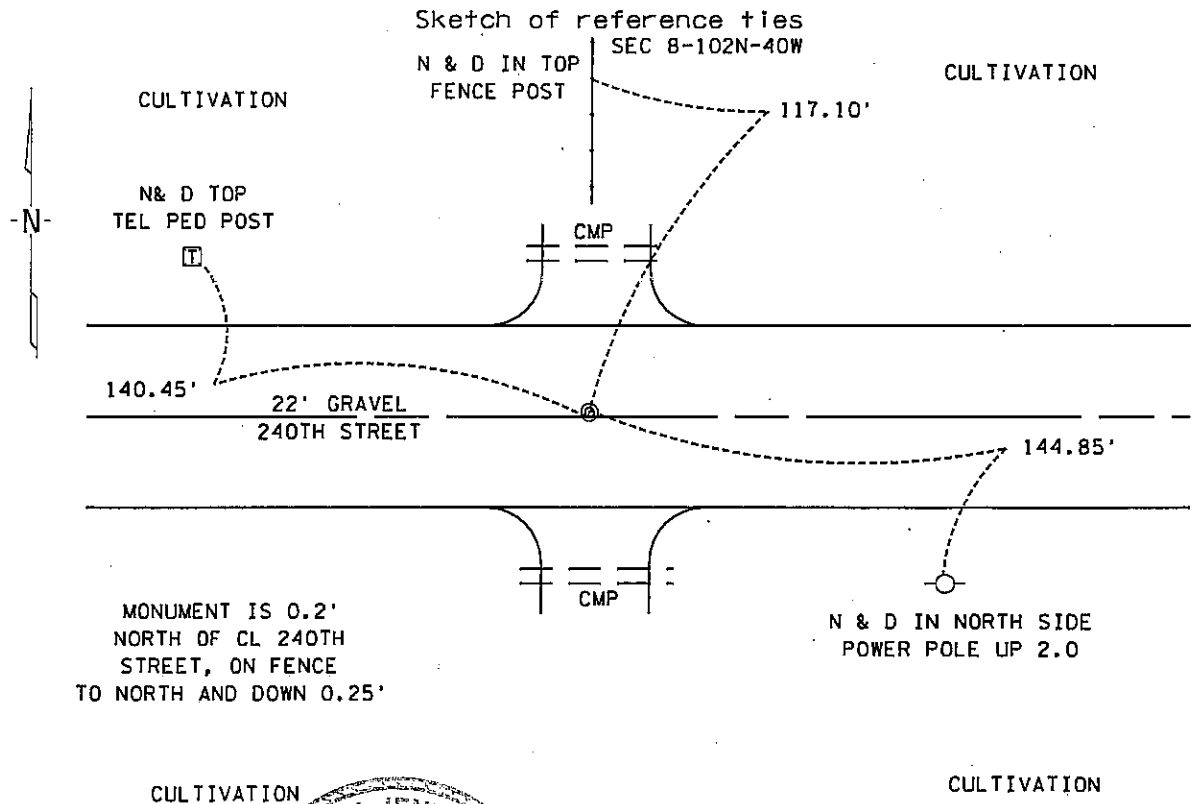
STATE OF MINNESOTA, County of NOBLES

At the corner location shown on the sketch :

On 3 OCTOBER 2000 found DNR SURVEY MARKER

left monument as found,  lowered monument,  removed monument (explain)

On \_\_\_\_\_ set \_\_\_\_\_



MONUMENT IS 0.2' NORTH OF CL 240TH STREET, ON FENCE TO NORTH AND DOWN 0.25'

SEC 17-102N-40W

Statement of evidence relative to this corner location is on back page

I hereby certify that this document and the data contained herein was prepared by me or under my direct supervision.

Signature \_\_\_\_\_ Date 6 Dec 00  
Registration No. 22683

Land Surveyor,  Professional Engineer  
 County Surveyor,  County Engineer

OFFICE OF THE COUNTY RECORDER

County of Nobles

I hereby certify that this document was filed in the Co. Recorders office at 8:50 A.M. on the 19th day of December, 2000 A.D.,

County Recorder James Howard  
By \_\_\_\_\_, Deputy

DOCUMENT NO. 281819

TRACKED & COMPARED  
PHOTO dm  
FEE 50c

Statement of Evidence:

NORTH QUARTER CORNER  
SECTION 17, TOWNSHIP 102 NORTH, RANGE 40 WEST  
5th PRINCIPAL MERIDIAN, MINNESOTA

- 25 Sept. 1868 -R.H.L. Jewett & George G. Howe, U.S. Deputy Surveyors, "East on Random line bet. Sec's. 8 & 17" @ 40.00 chs. "Set temp 1/4 Post" "N. 89-54 W. bet. Sec's. 8 & 17" @ 40.49 chs. "Set post in mound with pits for 1/4 Sec. Cor." No ties.
- Circa 1878 -Nobles County Recorder's Office, Surveyor's Record, Volume A-1, Page 58, by Milton S. Smith, County Surveyor, shows a distance of 39.79 chains from the South Quarter Corner of Sec. 8-102-40.
- 29 May 1901 -Nobles County Recorder's Office, Surveyor's Record, Volume A-2, Page 454, by Milton S. Smith, County Surveyor, shows a stone at the South Quarter Corner of Sec. 8-102-40 and a distance of 2680.5 feet is measured east and west to the Southeast and Southwest Corners.
- Circa 1935 -Nobles County Highway Department, Section Corner Book for Worthington Twp., shows a stone for the South Quarter Corner of Sec. 8-102-40.
- Circa 1959 -Nobles County Highway Department, Section Corner Book for Worthington Twp., shows a stone for the South Quarter Corner of Sec. 8-102-40 and that a iron pin was placed with ties: Fence Post 46.61' NW; Fence Post 31.39' SW; Fence Post 54.52' NE.
- 16 Mar. 1961 -Minnesota Highway Department, Land Tie Field Notes for I-90, SP 5380, states that a rock was found, down 2.5', a 5/8" iron pin was placed for the North Quarter Corner of Sec. 17-102-40.
- 21 Feb. 1978 -Minnesota Highway Department, Land Tie Field Notes for I-90, SP 5380-01, states that a metal locator was used to locate iron pin in vicinity of east-west road and north-south fence line and found nothing.
- 26 June 1984 -Nobles County Recorder's Office, Certificate of Location of Gov't Corner, by Lowell R. Pommerening, RLS # 17005, states that the DNR hired a backhoe to dig for the North Quarter Corner of Sec. 17-102-40. A 8" X 8" X 16" stone was found, down 14" at natural ground. Left stone and placed a 1" square by 4" channel pipe on its south side. Distances measured are 2678.92' west to the Northeast Corner of Sec. 18-102-40 and 2680.07' east to the Northeast Corner of Sec. 17-102-40. Minnesota DNR returned to this site in August 1988 and found that the monument had been destroyed and found same stone and set a "DNR SURVEY MARKER".
- 9 Apr. 1987 -Nobles County Recorder's Office, Document No. 230010, a Resolution by the Town Board of Worthington Township, declaring 66 foot wide easements for roads where the centerline of said easements incorporate the section lines and corners.
- 3 Oct. 2000 -MnDOT survey crew found a DNR aluminum cap stamped "DNR SURVEY MARKER", down 0.25' near centerline of east-west road and fence line to the north, also set new ties per sketch.

The evidence is not conclusive as to the true corner location, however the written, occupational and collateral evidence suggest that this is a reasonable location as to the corner. Additional information regarding the preparation of this certificate can be obtained by contacting: Survey Section, Minnesota Department of Transportation, 501 South Victory Drive, P.O. Box 4039, Mankato, MN 56002-4039.