

# CERTIFICATE OF LOCATION OF GOVERNMENT CORNER

NORTH QUARTER Corner of Section 19, Township 102 N, Range 40 W, 5th P.M.

STATE OF MINNESOTA, County of NOBLES

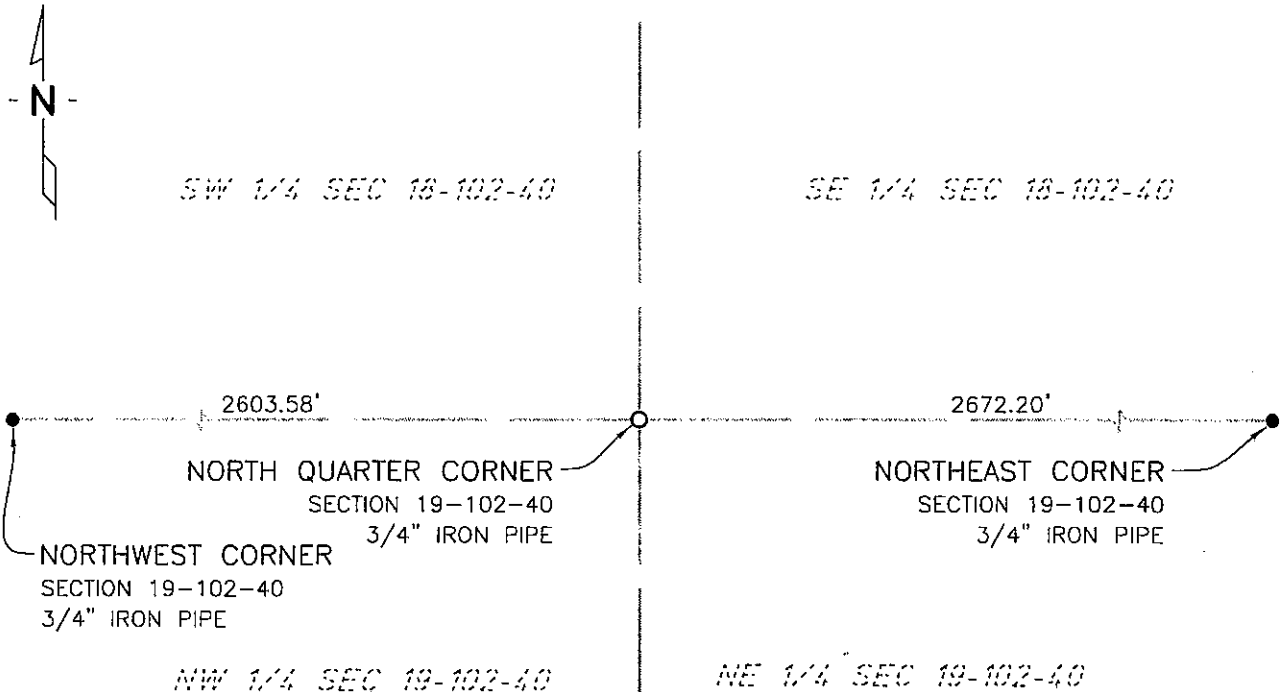
At the corner location shown on the sketch:

On 7/15/03 found a 5/8" REROD  
DATE

left monument as found,  lowered monument,  removed monument (explain)

On 1/25/06 placed a 3/4" X 18" IRON PIPE MONUMENT  
DATE

## SKETCH OF REFERENCE TIES



NAD83 (1996 ADJUSTMENT)  
STATE PLANE COORDINATES  
NOBLES COUNTY DATUM

N= 147894.481  
E= 570486.755

BOOK: 110 PG. 42  
I:\NOBLS\CERTIFICATES\2005\CAD\N19-102-40

Statement of evidence relative to this corner location is on back of page.

I hereby certify that this document and the data contained herein was prepared by me or under my direct supervision.

Janele Fowlds 4-24-06  
JANELE FOWLDS DATE

Registration No. 26748

- Land surveyor,  Professional Engineer  
 County Surveyor,  County Engineer

OFFICE OF THE COUNTY RECORDER

County of \_\_\_\_\_

I hereby certify that this document was filed in the Co. Recorders office at \_\_\_\_M. on the \_\_\_\_\_ day of \_\_\_\_\_ A.D., 19\_\_

County Recorder \_\_\_\_\_

By \_\_\_\_\_, Deputy

DOCUMENT NO. \_\_\_\_\_

## Statement of Evidence

North Quarter Corner Section 19, Township 102 North, Range 40 West

### Original Notes

- 1901 Nobles County Highway Department records show a stone monument.
- 1914 Nobles County Highway Department records show a stone monument.
- 1917 Nobles County Highway Department records show a stone monument.
- 1960 Nobles County Highway Department records show an "X" in concrete with the following ties:  
TP – Northeast 66.00'  
Gate Post – Southeast 74.75'  
Cor FE Post – South 52.95'  
Power Pole – Southwest 90.77'  
3.2' North of CL
- 1979 A calculation sheet, from Martin Land Surveying, Worthington, shows a concrete nail with R.L.S. tag set from county ties.
- 1999 Field notes from, Madsen Land Surveying Inc., Fairmont, shows a 5/8" iron rod found, with the following ties:  
Bottle Cap in Cor Fe Post – North 49.80'  
SRP in Cor FE Post – South 53.12'  
Bottle Cap in 2<sup>nd</sup> FE Post W of Cor FE Post – Southwest 57.23  
CL of Road E&W – South 3.3
- 2003 On July 16, Bolton & Menk, Inc., Mankato, found a 5/8" rerod at the surface of a county road.
- 2006 On January 25, Bolton & Menk, Inc., Fairmont, set a 3/4" x 18" iron pipe monument 1.7 feet south of centerline of C.S.A.H. 35 and on line with fence both north and south. The iron pipe was placed at the location of the previously found 5/8" rerod. The rerod was lost due to road construction.