

CERTIFICATE OF LOCATION OF GOVERNMENT CORNER

NORTH QUARTER Corner of Section 20, Township 102N, Range 40W, 5TH P.M.

STATE OF MINNESOTA, county of NOBLES

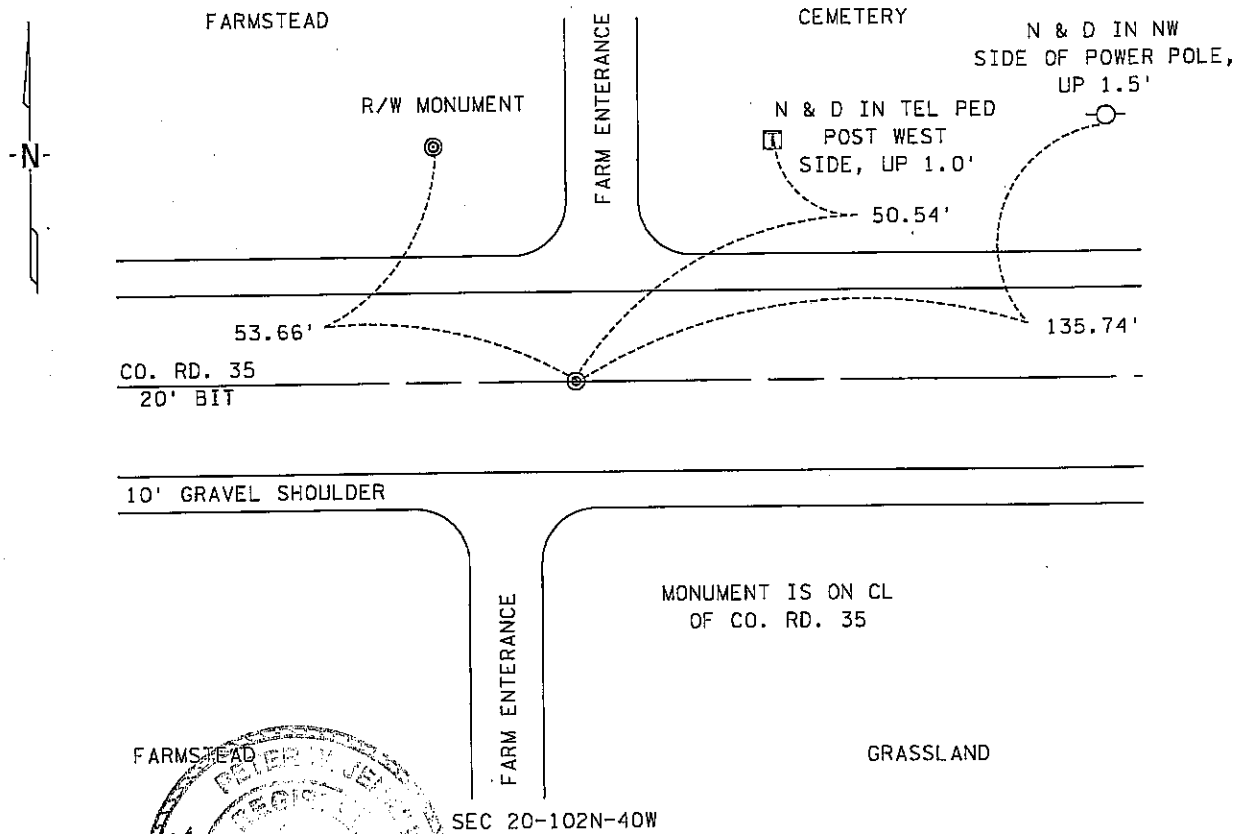
At the corner location shown on the sketch :

On 3 OCTOBER 2000 found 5/8" IRON PIN, FLUSH

left monument as found, lowered monument, removed monument (explain)

On _____ set _____

Sketch of reference ties
SEC 17-102N-40W



Statement of evidence relative to this corner location is on back page

I hereby certify that this document and the data contained herein was prepared by me or under my direct supervision.

[Signature] 6 Dec 00
Signature Date

Registration No. 22683
 Land Surveyor, Professional Engineer
 County Surveyor, County Engineer

OFFICE OF THE COUNTY RECORDER
County of Nobles

I hereby certify that this document was filed in the Co. Recorders office at 9:05 A .M. on the 19th day of December, 2000 A.D., 190

County Recorder Jayce Howard
By _____, Deputy

DOCUMENT NO. 281822

TRACKED & COMPARED
PHOTO [Signature]
FEE 276

Statement of Evidence:

NORTH QUARTER CORNER
SECTION 20, TOWNSHIP 102 NORTH, RANGE 40 WEST
5th PRINCIPAL MERIDIAN, MINNESOTA

- 25 Sept. 1868 -R.H.L. Jewett & George G. Howe, U.S. Deputy Surveyors, "East on Random line bet. Sec's. 17 & 20" @ 40.00 chs. "Set temp 1/4 Post" "S. 89-28 W. bet. Sec's. 17 & 20" @ 40.05½ chs. "Set post in mound with pits for 1/4 Sec. Cor." No ties.
- July 1917 -Nobles County Recorder's Office, Surveyor's Record, Volume B, Page 98, by William Saxon, County Surveyor, shows a stone at the North Quarter Corner of Sec. 20-102-40 with a distance of 2619.5' west to the Northwest Corner and a distance of 2709.5' east to the Northeast Corner and ties: Box Elder 47.5' N; Cor. Lincoln School 170' NE.
- Circa 1917 -Nobles County Highway Department, Section Corner Book for Worthington Twp., shows a stone at the South Quarter Corner of Sec. 17-102-40.
- Circa 1930 -Minnesota Highway Department, Final Estimate Notes for US 16, show the Quarter Section Line at station 317+54.8 but does not say what is at centerline. Paving plans show the North Quarter Corner of Sec. 20-102-40 on centerline at the intersection of fence lines.
- Circa 1959 -Nobles County Highway Department, Section Corner Book for Worthington Twp., shows a iron pin for the South Quarter Corner of Sec. 17-102-40 with ties: R/W Marker 53.68' NW; PP 76.98' SW; TP 50.44' NE.
- 6 Apr. 1960 -Minnesota Highway Department, Land Tie Field Notes for US 16, states that a 60d was set on the centerline of US 16 from the right of way and paving plans for the North Quarter Corner of Sec. 20-102-40.
- 23 Feb. 1978 -Minnesota Highway Department, Land Tie Field Notes for I-90, SP 5380-01, states that the R/W monument to the northwest was found but no other evidence of the North Quarter Corner of Sec. 20-102-40 was found, the search was abandoned.
- 3 Oct. 2000 -MnDOT survey crew found a 5/8" iron pin flush with surface and on centerline of CSAH 35, old US 16, for the North Quarter Corner of Sec. 20-102-40, also set new ties per sketch.

The evidence is not conclusive as to the true corner location, however the written, occupational and collateral evidence suggest that this is a reasonable location as to the corner. Additional information regarding the preparation of this certificate can be obtained by contacting: Survey Section, Minnesota Department of Transportation, 501 South Victory Drive, P.O. Box 4039, Mankato, MN 56002-4039.