

# CERTIFICATE OF LOCATION OF GOVERNMENT CORNER

NORTH QUARTER Corner of Section 20, Township 102 N, Range 40 W, 5th P.M.

STATE OF MINNESOTA, County of NOBLES

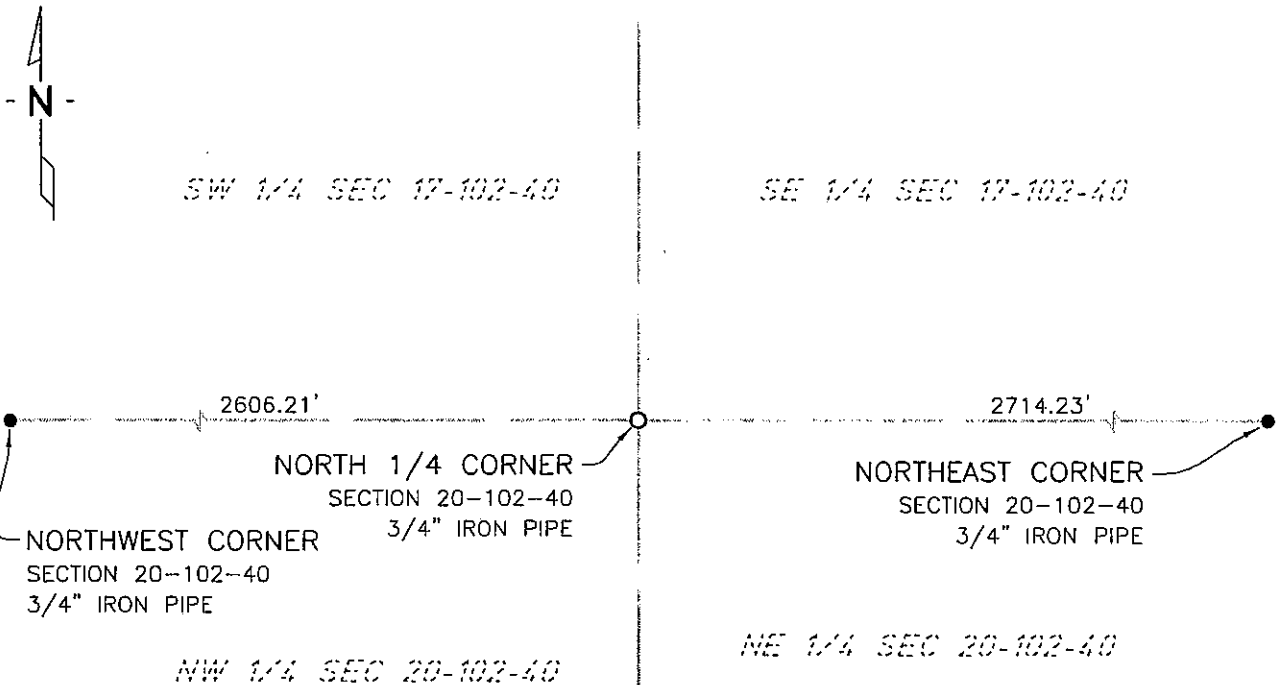
At the corner location shown on the sketch:

On 7/16/03 found a REROD  
DATE

left monument as found,  lowered monument,  removed monument (explain)

On 1/25/06 placed a 3/4" IRON PIPE MONUMENT  
DATE

## SKETCH OF REFERENCE TIES



NAD83 (1996 ADJUSTMENT)  
STATE PLANE COORDINATES  
NOBLES COUNTY DATUM

N= 147855.099

E= 575764.826

BOOK: 110 PG. 43

I:\NOBLS\CERTIFICATES\2005\CAD\N20-102-40

Statement of evidence relative to this corner location is on back of page.

I hereby certify that this document and the data contained herein was prepared by me or under my direct supervision.

Janele Fowlds 4-24-06  
JANELE FOWLDS DATE

Registration No. 26748

Land surveyor,  Professional Engineer

County Surveyor,  County Engineer

OFFICE OF THE COUNTY RECORDER

County of \_\_\_\_\_

I hereby certify that this document was filed in the Co. Recorders office at \_\_\_\_M. on the \_\_\_\_\_ day of \_\_\_\_\_ A.D., 19\_\_

County Recorder \_\_\_\_\_

By \_\_\_\_\_, Deputy

DOCUMENT NO. \_\_\_\_\_

Statement of Evidence

North Quarter Corner Section 20, Township 102 North, Range 40 West

Original Notes

- 1917 Nobles County Highway Department records show a stone monument.
- 1959 Nobles County Highway Department records show an iron pin with the following ties:  
R/W Marker – Northwest 53.68'  
Power Pole – Southwest 76.98'  
Tel Ped – Northwest 63.25'
- 2003 On July 16, Bolton & Menk, Inc., found a rerod at the surface of a county road.
- 2006 On January 25, Bolton & Menk, Inc., Fairmont, set a ¾" x 18" iron pipe monument on the centerline of C.S.A.H. 35 and at centerline of gravel driveway to the north. The iron pipe was placed at the location of the previously found rerod. The rerod was lost due to road construction.