

# CERTIFICATE OF LOCATION OF GOVERNMENT CORNER

NORTH QUARTER Corner of Section 21, Township 102 N., Range 40 W., 5th P.M.

STATE OF MINNESOTA, County of NOBLES

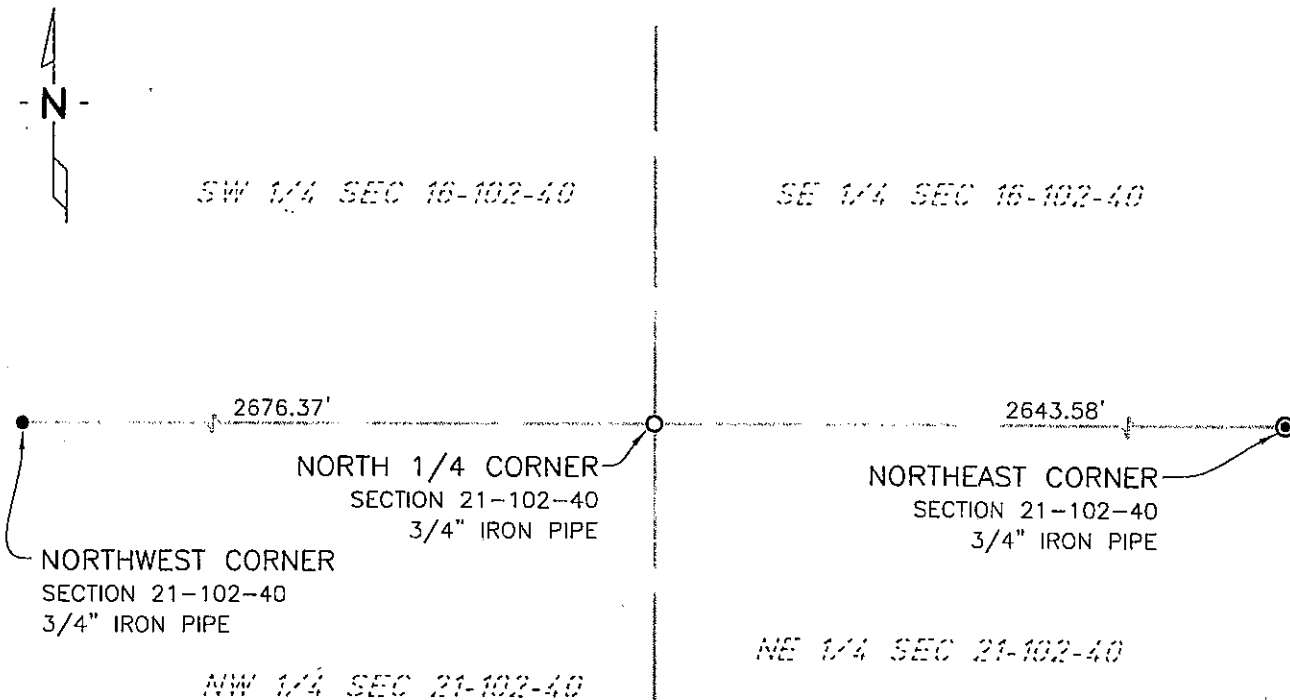
At the corner location shown on the sketch:

On 7/16/03 found a CAST IRON MONUMENT  
DATE

left monument as found,  lowered monument,  removed monument (explain)

On 1/17/06 placed a 3/4" IRON PIPE MONUMENT  
DATE

### SKETCH OF REFERENCE TIES



NAD83 (1996 ADJUSTMENT)  
STATE PLANE COORDINATES  
NOBLES COUNTY DATUM

N= 147872.280

E= 581155.083

BOOK: 110 PG. 43

I:\NOBLES\CERTIFICATES\2005\CAD\N21-102-40

Statement of evidence relative to this corner location is on back of page.

I hereby certify that this document and the data contained herein was prepared by me or under my direct supervision.

Janele Fowlds 4-24-06  
JANELE FOWLDS DATE

Registration No. 26748

Land surveyor,  Professional Engineer

County Surveyor,  County Engineer

OFFICE OF THE COUNTY RECORDER

County of \_\_\_\_\_

I hereby certify that this document was filed in the Co. Recorders office at \_\_\_\_M. on the \_\_\_\_\_ day of \_\_\_\_\_ A.D., 19\_\_

County Recorder \_\_\_\_\_

By \_\_\_\_\_, Deputy

DOCUMENT NO. \_\_\_\_\_

Statement of Evidence

North Quarter Corner Section 21, Township 102 North, Range 40 West

Original Notes

- 1892 Nobles County Highway Department records show a stone monument.
- 1959 Nobles County Highway Department records show a spike with the following ties:  
Tel Ped – Northwest 139.98'  
Tel Ped – Northeast 74.80'
- 2003 On July 16, Bolton & Menk, Inc., Mankato, found a cast iron monument.
- 2006 On January 17, Bolton & Menk, Inc. Fairmont, placed a ¾" x 18 iron pipe monument which is in the side slope of highway 38 feet south of the centerline of C.S.A.H. 35 and in line with fence to south. The iron pipe was placed at the previously located cast iron monument. The monument was lost due to construction.