

CERTIFICATE OF LOCATION OF GOVERNMENT CORNER

NORTH QUARTER Corner of Section 22, Township 102 N, Range 40 W, 5th P.M.

STATE OF MINNESOTA, County of NOBLES

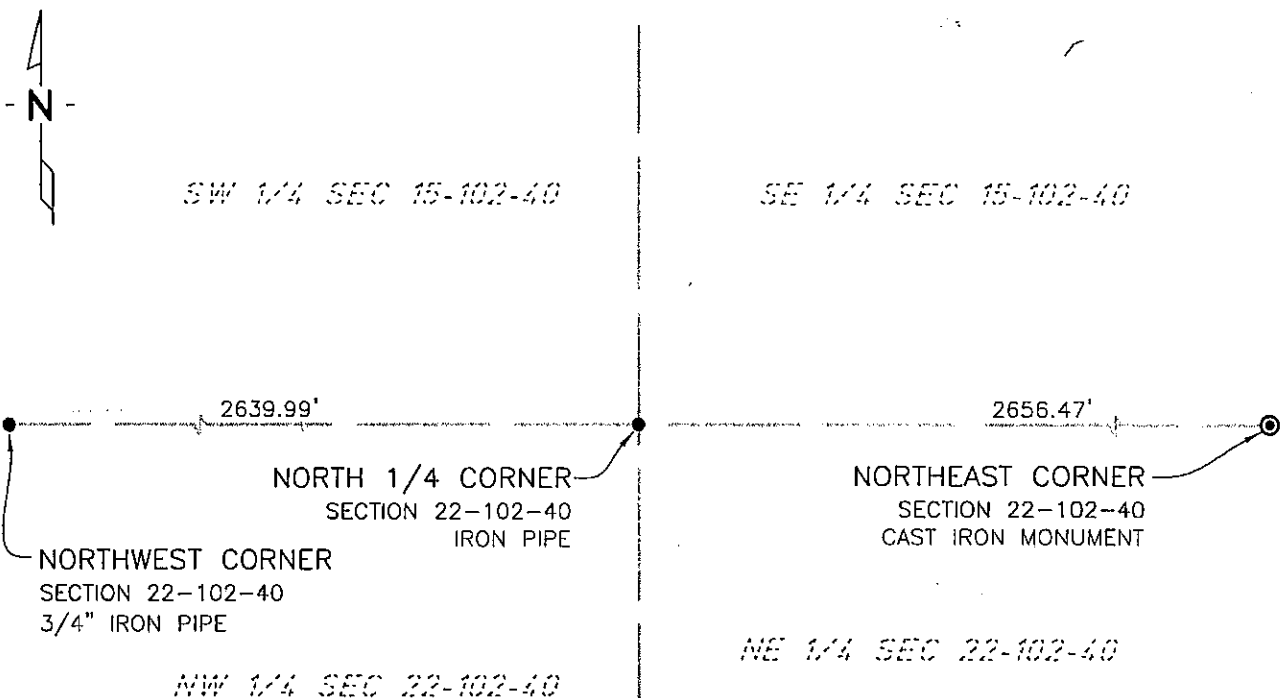
At the corner location shown on the sketch:

On 7/16/03 found a IRON PIPE
DATE

left monument as found, lowered monument, removed monument (explain)

On _____ placed a _____
DATE

SKETCH OF REFERENCE TIES



NAD83 (1996 ADJUSTMENT)
STATE PLANE COORDINATES
NOBLES COUNTY DATUM

N= 147926.092
E= 586438.243

BOOK: 110 PG. 43
I:\NOBLS\CERTIFICATES\2005\CAD\N22-102-40

Statement of evidence relative to this corner location is on back of page.

I hereby certify that this document and the data contained herein was prepared by me or under my direct supervision.

Janele Fowlds 4-24-06
JANELE FOWLDS DATE

Registration No. 26748

- Land surveyor, Professional Engineer
- County Surveyor, County Engineer

OFFICE OF THE COUNTY RECORDER

County of _____

I hereby certify that this document was filed in the Co. Recorders office at ____ M. on the _____ day of _____ A.D., 19__

County Recorder _____

By _____, Deputy

DOCUMENT NO. _____

Statement of Evidence

North Quarter Corner Section 22, Township 102 North, Range 40 West

Original Notes

- 1919 Nobles County Highway Department records show an iron pin.
- 1978 MN/DOT researched and found an "X" chiseled in the concrete. This position was recorded on September 15.
- 1994 Nobles County Highway Department records show Madsen Land Surveying Inc., Fairmont, found an "X" in concrete with the following ties:
CL Concrete Paving – South 19.80'
South Edge of Curb – North 2.10'
SW Bolt of Light Pole – Northeast 55.90'
Bottle Cap in Tel Ped Post – North 48.45'
Bottle Cap in Country Club North Sign Post – Southeast 92.00'
- 1998 Field notes received by Madsen Land Surveying Inc., Fairmont, shows the "X" in concrete was dilled out and a 5/8"x24" iron rod with an aluminum cap was placed on April 30, with the following ties:
Nail & Disk in Tel Ped Post – North 48.52'
Nail & Disk in N. Post of country Club Sign – Southeast 93.02
SW Bolt of LP – Northeast 56.0
CL of Road E&W – South 19.85'
Concrete-Bit Edge – West 32.0'
- 2003 On July 16, Bolton & Menk, Inc., Mankato, found an iron pipe at the surface.
- The evidence is not conclusive as to the true corner location, however the occupational and collateral evidence suggest that this is a reasonable location as to the corner. Additional information regarding the preparation of this certificate can be obtained by contacting: Bolton & Menk, Inc., Mankato, MN.