

CERTIFICATE OF LOCATION OF GOVERNMENT CORNER

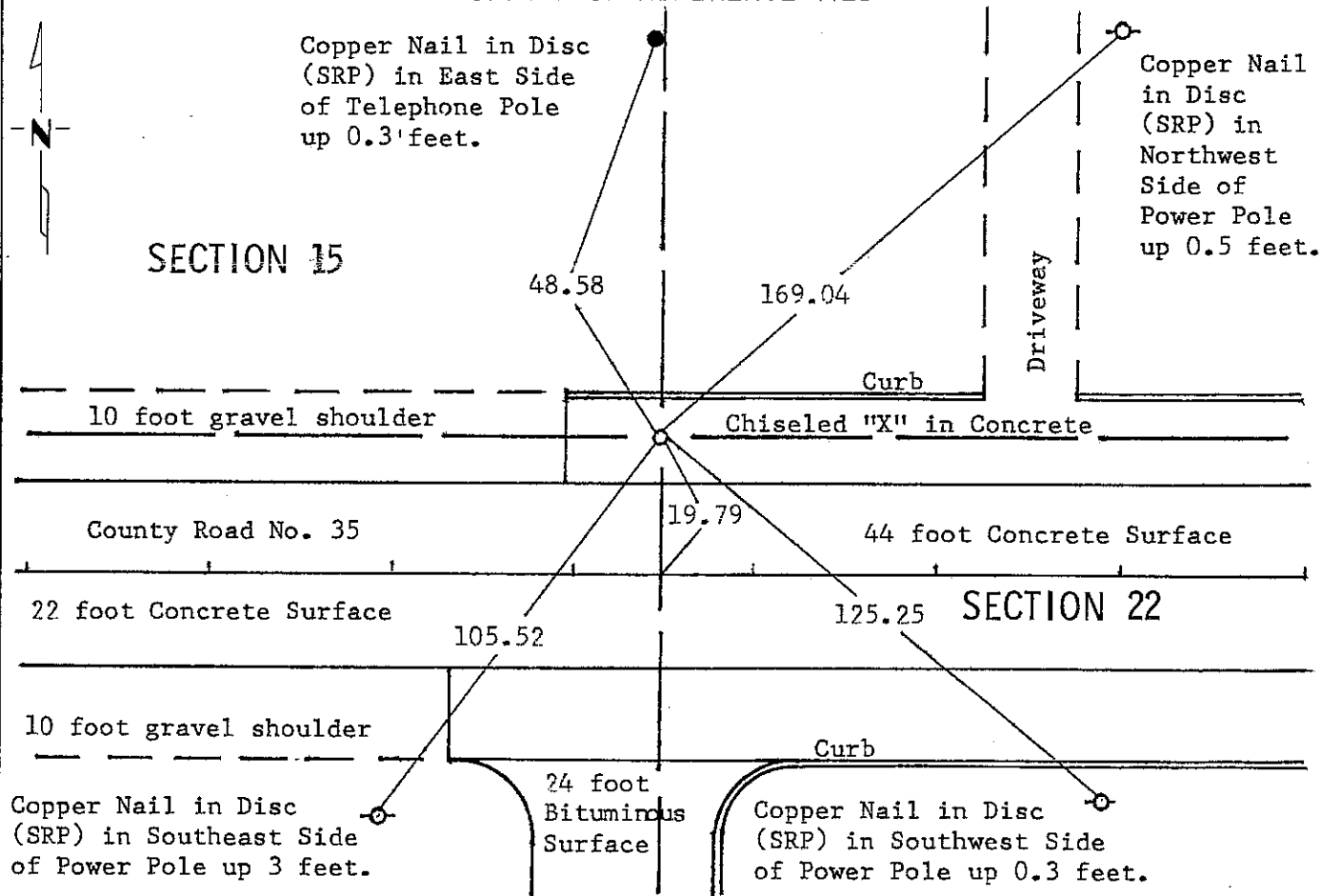
NORTH QUARTER Corner of Section 22, Township 102N, Range 40W, 5 P.M.

STATE OF MINNESOTA, County of NOBLES

At the corner location shown on the sketch:

- On May 2, 1978 found a "X" in Concrete, 2.1' South of Curb
DATE
- left monument as found, lowered monument, removed monument (explain)
- On _____ placed a _____
DATE

SKETCH OF REFERENCE TIES



Statement of evidence relative to this corner location is on back of page.

I hereby certify that this document and the data contained herein was prepared by me or under my direct supervision.

S. Elton Lober Sept 13, 1978
SIGNATURE DATE

Registration No. 11933

Land Surveyor, Professional Engineer
 County Surveyor, County Engineer

OFFICE OF THE COUNTY RECORDER
County of Nobles

I hereby certify that this document was filed in the Co. Recorders office at 11:30 A.M. on the 15th day of September A.D., 1978

County Recorder Jayco Lemke
By _____, Deputy

DOCUMENT NO. 203814

pared J.L.

Statement of Evidence:N $\frac{1}{4}$ Cor. Sec. 22 T102N R40W Nobles

September 25, 1868 - G. G. Howe - The original public land surveyor's notes read:
"Set post in mound with pits for $\frac{1}{4}$ section corner".

1919 - Notes from Nobles County Highway Department read: "Iron pin in 1919".

Date Unknown - Anonymous (McMurty?) - Record of survey in Section 22 indicates there was an iron pipe 33 feet south of corner. North $\frac{1}{4}$ Corner of Section 22 is 2655.8 feet west of N/E Corner. Survey had "+" mark on pavement, but this was probably before 1947 when alignment was changed.

October 19, 1929 - Survey by L. H. Miller in Section 15 indicates that the distance from N $\frac{1}{4}$ 22 to N.E. Corner 22 is 2655 feet. Corner was "x" on pavement.

Circa 1947 - Anonymous - Minnesota Highway Department - old R/W and plan sheets - Corner is shown at Sta. 424+19 \pm and near north edge of pavement or possibly on north shoulder. (Approx. 7 feet to 22.7 feet north of present centerline).

Circa 1959 - Anonymous - Minnesota Highway Department's survey crew S.P. 5380 for I-90 location - states in his notes: "Established from T.H. 16 print".

1975-1977 - A plat of Homewood Hills Sixth Addition by RCM, dated May of 1975, shows this land corner as a symbol: "Denotes survey monuments in place". A correction of this same plat, filed by Delbert Rieke in August of 1977, describes the land corner as: "Found chiseled "x" in concrete pavement". A plat of Homewood Hills Seventh Addition by RCM, dated August of 1977, describes the land corner as: "Chiseled "x" in concrete pavement".

March 28, 1978 - David Raley of the Minnesota Department of Transportation contacted Bennie Gerdes - age 60 \pm and Don Johnson - age 50 \pm about this land corner. Mr. Johnson advised that all of his recent survey work was done by RCM of Worthington. He also advised that Maynard Lueth of Fairmont (former Worthington City Engineer) did some survey work for him in the past. Mr. Gerdes didn't know anything about this land corner.

The location of the in place chiseled "x" is compatible with the survey by Miller in 1929 and other surveys, and was used to subdivide part of Section 15 in 1977. Based on this evidence the in place chiseled "x" in the new pavement is accepted as the perpetuated position of the "x" in the old road and is accepted as the land corner.

For additional information, including field measurements and photographs, contact the Minnesota Department of Transportation in Windom.