

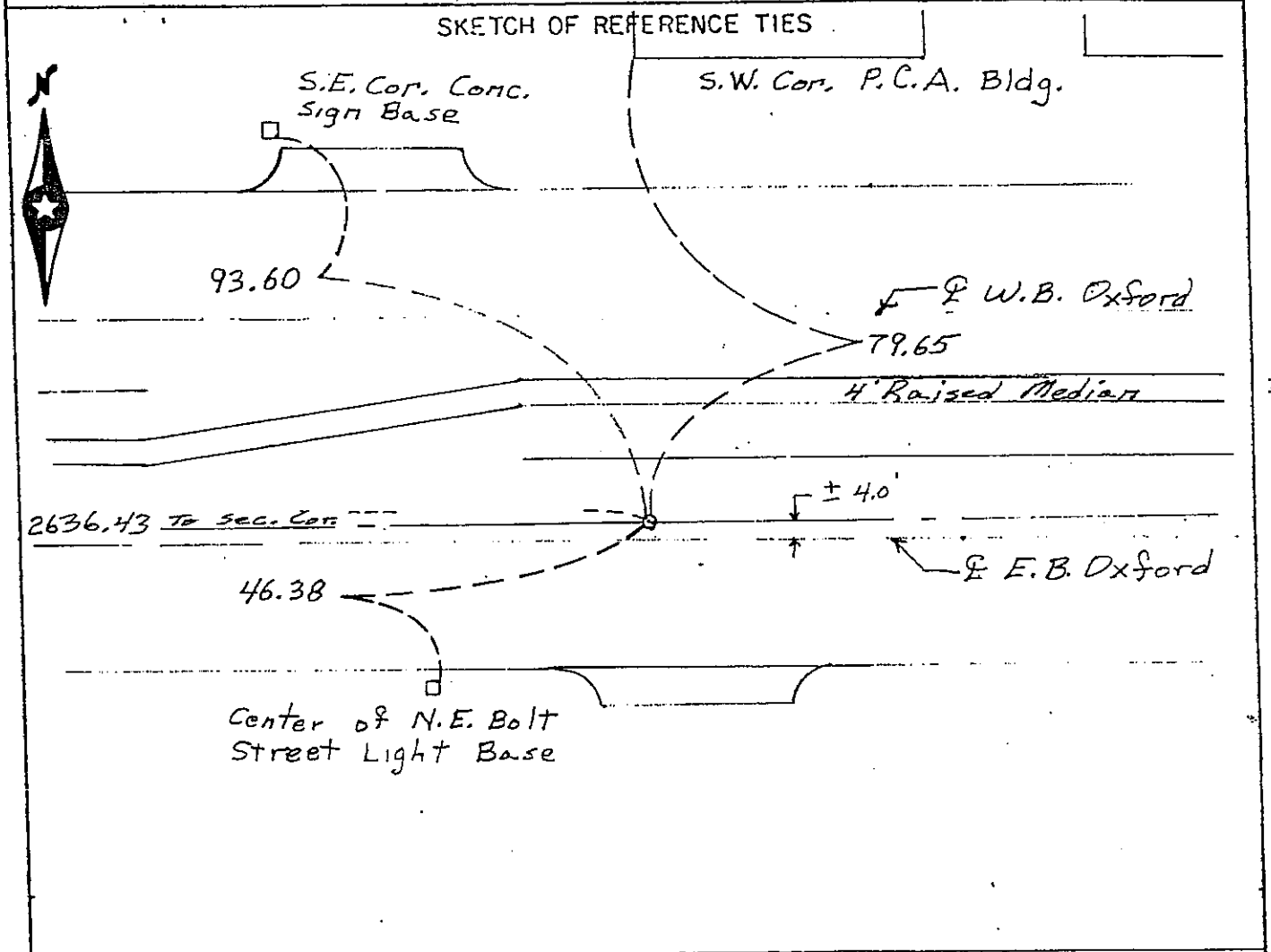
238822

CERTIFICATE OF LOCATION OF GOVERNMENT CORNER

North Quarter Corner of Section 23, Township 102N, Range 40W, 5 P.M.
STATE OF MINNESOTA, County of NOBLES

At the corner location shown on the sketch:

- On _____ found a _____
DATE
- left monument as found, lowered monument, removed monument (explain)
- On 10/11/89 placed a Cast Iron Monument in it's original location
DATE after Street reconstruction.



I hereby certify that this document and the data contained herein was prepared by me or under my direct supervision.

Jerome H. Smith 10-11-89
SIGNATURE DATE

Registration No. 12003
 Land Surveyor, Professional Engineer
 County Surveyor, County Engineer

OFFICE OF THE COUNTY RECORDER
County of Nobles

I hereby certify that this document was filed in the Co. Recorders office at 11:50 A.M. on the 13th day of November A.D., 1989

County Recorder Joyce Howard
By _____, Deputy
DOCUMENT NO. 238822