

CERTIFICATE OF LOCATION OF GOVERNMENT CORNER

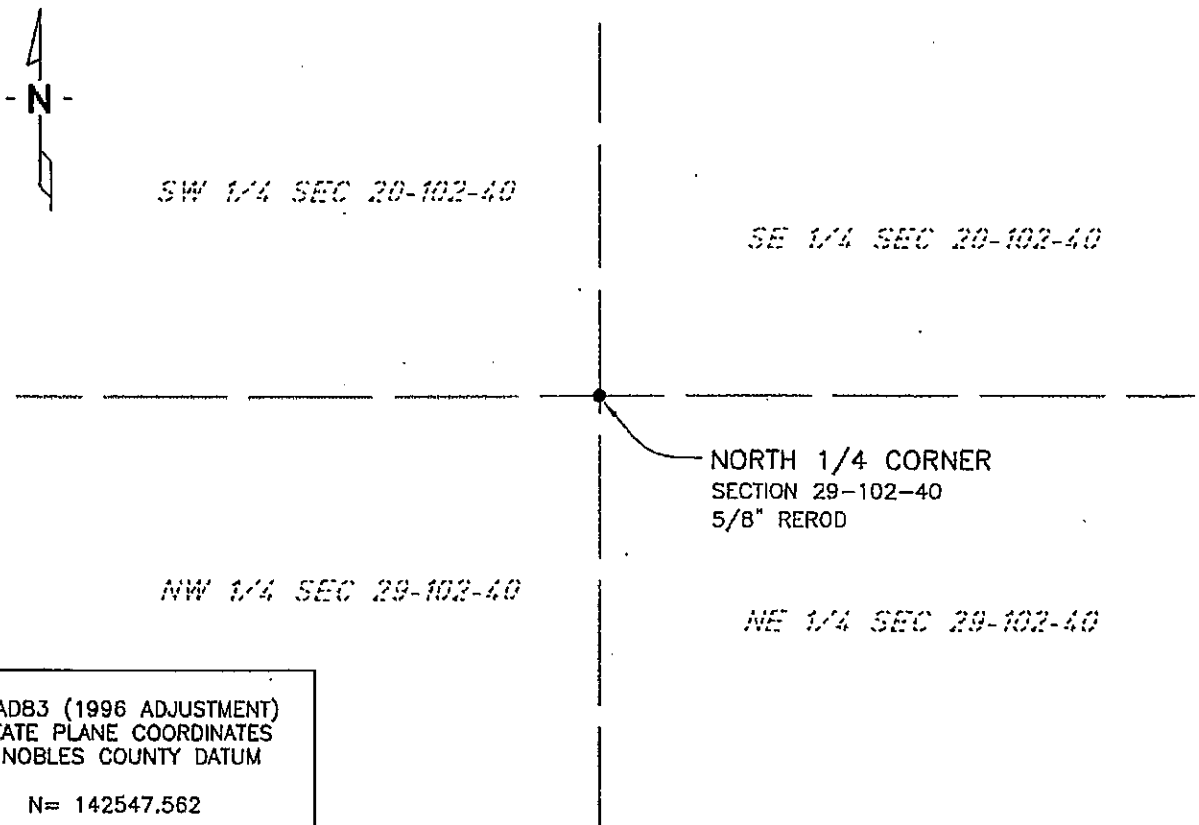
NORTH QUARTER Corner of Section 29, Township 102 N, Range 40 W, 5th P.M.

STATE OF MINNESOTA, County of NOBLES

At the corner location shown on the sketch:

- On 7/16/03 found a 5/8" REROD
DATE
- left monument as found, lowered monument, removed monument (explain)
- On _____ placed a _____
DATE

SKETCH OF REFERENCE TIES



NAD83 (1996 ADJUSTMENT)
STATE PLANE COORDINATES
NOBLES COUNTY DATUM

N= 142547.562
E= 575884.478

BOOK: 110 PG. 43
I:\NOBLS\CERTIFICATES\2005\CAD\N29-102-40

Statement of evidence relative to this corner location is on back of page.

I hereby certify that this document and the data contained herein was prepared by me or under my direct supervision.

Janele Fowlds 4-24-06
JANELE FOWLDS DATE

Registration No. 26748

- Land surveyor, Professional Engineer
- County Surveyor, County Engineer

OFFICE OF THE COUNTY RECORDER

County of _____
I hereby certify that this document was filed in the Co. Recorders office at ____M. on the _____ day of _____ A.D., 19__

County Recorder _____
By _____, Deputy

DOCUMENT NO. _____

Statement of Evidence

North Quarter Corner Section 29, Township 102 North, Range 41 West

Original Notes

- 1896 Nobles County Highway Department records show an iron pin.
- 1987 A, Bell Surveying Inc., Worthington, survey shows a found 2" iron pipe. Bell then set a rebar, marked with registration number 16093, inside iron pipe.
- 1997 A Madsen Land Surveying Inc., Fairmont, survey shows a found 1/2" iron rod with a Bell Surveying cap, that was 12" deep. Madsen raised it to 5" deep.
- 2003 On July 14, Bolton & Menk, Inc., Mankato, found a capped iron pipe, with registration number 16093, 0.6 foot below road surface.