

CERTIFICATE OF LOCATION OF GOVERNMENT CORNER

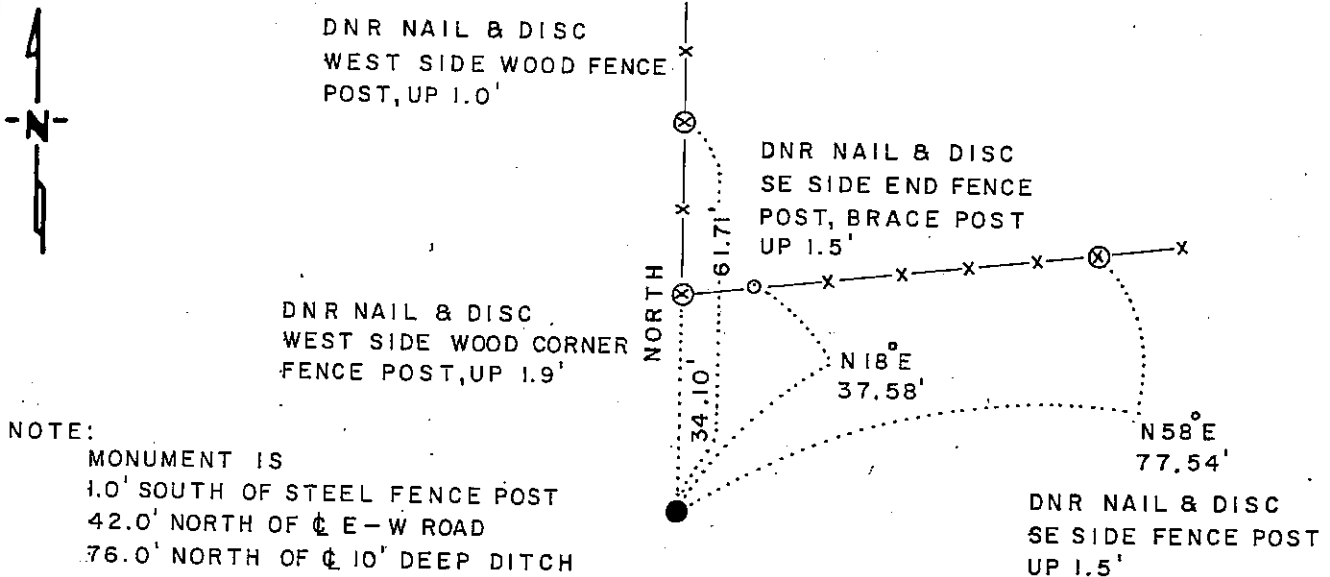
NORTH QUARTER Corner of Section 7, Township 102N, Range 40 W, 5th P.M.

STATE OF MINNESOTA, County of NOBLES

At the corner location shown on the sketch:

- On 8-9-88 found a 4" x 5 1/2" x 13" GRANITE STONE
DATE
- left monument as found, lowered monument, removed monument (explain)
- On 8-9-88 placed a 1 1/4" x 1 1/4" x 20" PERFORATED STEEL TUBE WITH ALUMINUM CAP STAMPED "DNR SURVEY MARKER", FLUSH
DATE

SKETCH OF REFERENCE TIES



BEARINGS OBSERVED WITH COMPASS

Statement of evidence relative to this corner location is on back of page

J.B.M. 8-30-88
8-965

I hereby certify that this document and the data contained herein was prepared by me or under my direct supervision

Lowell R. Pomeroy 9-20-88
SIGNATURE DATE

Registration No. 17005

- Land Surveyor, Professional Engineer
- County Surveyor, County Engineer

OFFICE OF THE COUNTY RECORDER

County of Nobles

I hereby certify that this document was filed in the Co. Recorders office at 3:35 P.M. on the 21st day of September A.D., 1988

County Recorder Jane Howard

By _____, Deputy

DOCUMENT NO. 234932

North Quarter Corner Section 7, Township 102 North, Range 40 West

The DNR Bureau of Engineering contacted the following offices for survey information on this corner:

MN Secretary of State
 Nobles County Recorder and Highway Engineer
 Mn/DOT at Windom
 Martin Land Surveying at Worthington
 Rieke-Carroll-Muller

- 1868 The U.S. General Land Office notes in the Secretary of State's Office show the corner is a post, set in a mound with pits.
- No Date Surveyor's Record Book A-1, on page 23, obtained from the County Recorder's Office, contains a survey, surveyor not indicated. Survey shows a distance of 40.18 chains from this corner to the center of Section 6. No mention of a monument is made.
- 1914 Surveyor's Record Book B, on page 56, obtained from the County Recorder's Office, contains a survey by William Saxon, County Surveyor. Survey shows the corner was identified by the original government mound. Corner measures 2620 ft. from the northeast corner Section 12.
- 1965 June, the DNR Bureau of Engineering traversed to the area of the corner and set a spike at the intersection of a fence line north and on line between adjoining section corners. Spike measures:
 2643.8 ft. from the northeast corner Section 7
 2617.0 ft. from the northeast corner Section 12
- 1978 November, the DNR Bureau of Engineering conducted a search for this corner and found a 4" by 5½" by 13" granite stone lying on its side, just below the ground, on the south side of a corner fence post, fences east-west and north. Stone was found to measure 2617.79 ft. from the northeast corner Section 12
- Analysis of the available information led the DNR Bureau of Engineering to conclude that the stone marks the location of the corner.
- 1988 August, the DNR Bureau of Engineering revisited the corner and found the stone as previously located. Placed a DNR Survey Marker at the corner location, the stone now on the survey marker's north side.