

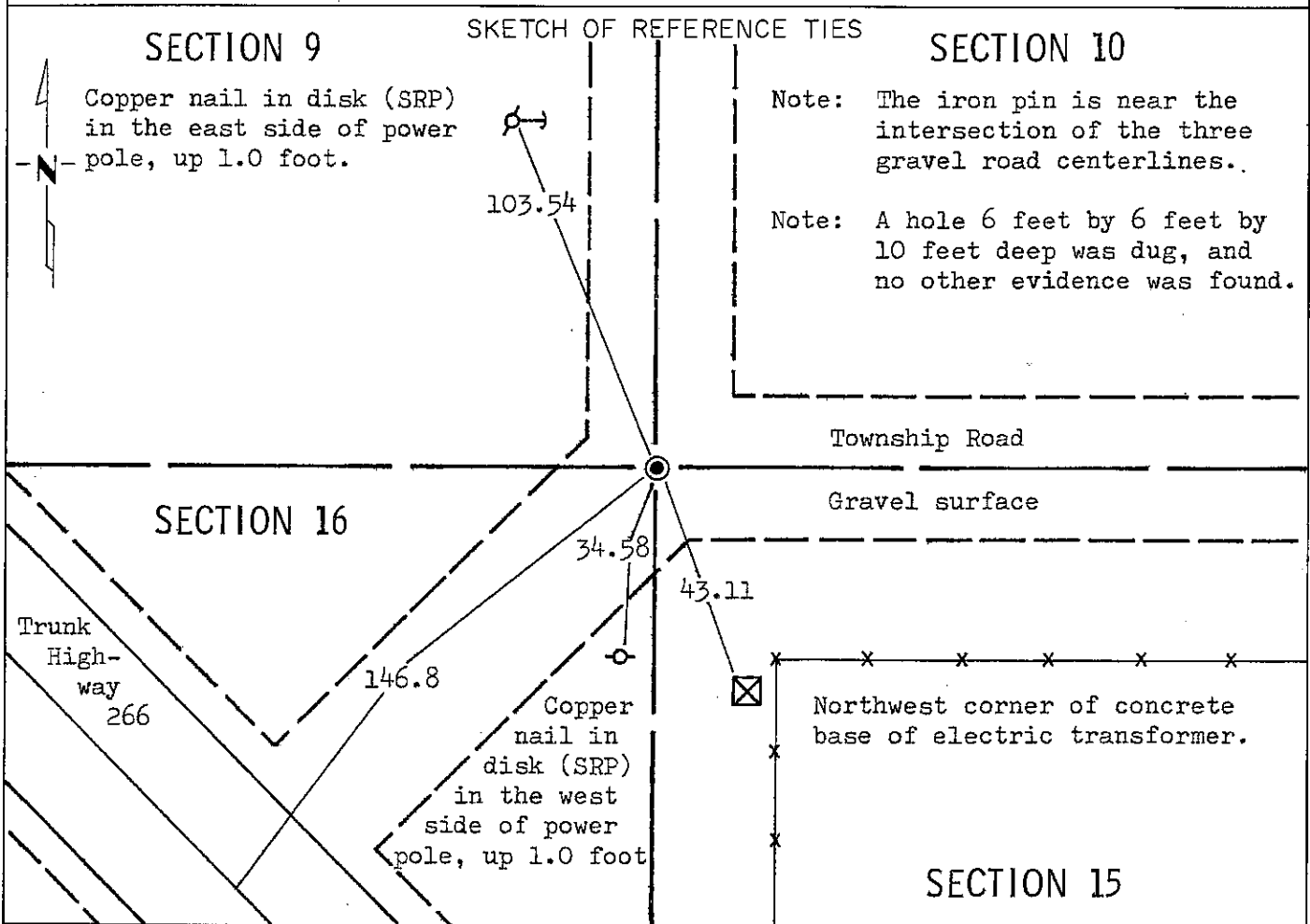
# CERTIFICATE OF LOCATION OF GOVERNMENT CORNER

NORTHEAST Corner of Section 16, Township 102N, Range 40W, 5 P.M.

STATE OF MINNESOTA, County of NOBLES

At the corner location shown on the sketch:

- On May 1, 1978 found a 3/4 inch iron pin, down 0.3 feet, over another iron pin, down 1.0 feet, over a 1 inch by 2 inch wooden stake, down 2.0 feet.
  - left monument as found,  lowered monument,  removed monument (explain)
- On \_\_\_\_\_ placed a \_\_\_\_\_



Statement of evidence relative to this corner location is on back of page.

I hereby certify that this document and the data contained herein was prepared by me or under my direct supervision.

S. Eldon Lober Sept 13, 1978  
SIGNATURE DATE

Registration No. 11933

- Land Surveyor,  Professional Engineer
- County Surveyor,  County Engineer

OFFICE OF THE COUNTY RECORDER

County of Nobles

I hereby certify that this document was filed in the Co. Recorders office at 11:10 A .M. on the 15th day of September A.D., 1978

County Recorder Joyce Lemke

By \_\_\_\_\_, Deputy

DOCUMENT NO. 203810

Statement of Evidence:

N.E. Cor. Sec. 16 T102N R40W Nobles

September 25, 1868 - G. G. Howe - The original Public Land Surveyor's notes read:  
"Set post in mound with pits for corner to Sections 9, 10, 15 & 16".

April 30, 1892 - Milton S. Smith - Nobles County Surveyor - "N-E Sec. Cor. is a stone set in mound".

April 30, 1894 - Milton S. Smith - County Surveyor, found mound and pits and small stone - "Set large stone".

April 16, 1897 - M. S. Smith, County Surveyor, did a survey in Section 9 and shows on the record that there is a stone at southeast corner (this is also Diagonal Road).

1912 - Notes from Nobles County Highway Department read: "Stone in 1912".

March 19, 1913 - Wm. A. Saxon, County Surveyor, survey record for diagonal road shows stone at corner to Sections 9, 10, 15 and 16.

1939 - Notes from Nobles County Highway Department read: "Stake in 1939".

1955 - Notes from Nobles County Highway Department read: "Stake in 1955 Placed Iron Pin".

May, 1957 - M. A. Sater, Minnesota Highway Department, S.P. 5311-01: "I.P. in place found using county ties".

Circa 1958 - anonymous - Minnesota Highway Department's construction plans S.P. 5311-02: "Sec. Cor. 146.85' Lt. of L<sup>P.O.T.</sup> Sta. 700+43<sup>8</sup> I.P. in place".

Circa 1959 - anonymous - Minnesota Highway Department's Survey Crew: "3/4" I.P. in place".

1959 - Notes from Nobles County Highway Department read: "Iron pin in 1959".

February 22, 1978 - Foster, Stoeckman and Verdoorn of the Minnesota Department of Transportation used notes from Location Survey S.P. 5380-01. Found 3/4 inch iron pin down 1 foot near centerlines of north-south township road to north and east-west township road to east.

March 28, 1978 - David Raley of the Minnesota Department of Transportation contacted Lloyd Standafer - age 60 about this land corner. He advised that he has lived in the area for the past 12 years and that he considers the centerline of the roads as the property line. He knew of no surveys or any property disputes in this area.

An analysis of the Statement of Evidence and the field measurements indicate that the in place location of the two iron pins and wooden stake provides a continuous chain of perpetuation of the original Public Land Survey corner.

For additional information, including field measurements and photographs, contact the Minnesota Department of Transportation in Windom.