

CERTIFICATE OF LOCATION OF GOVERNMENT CORNER

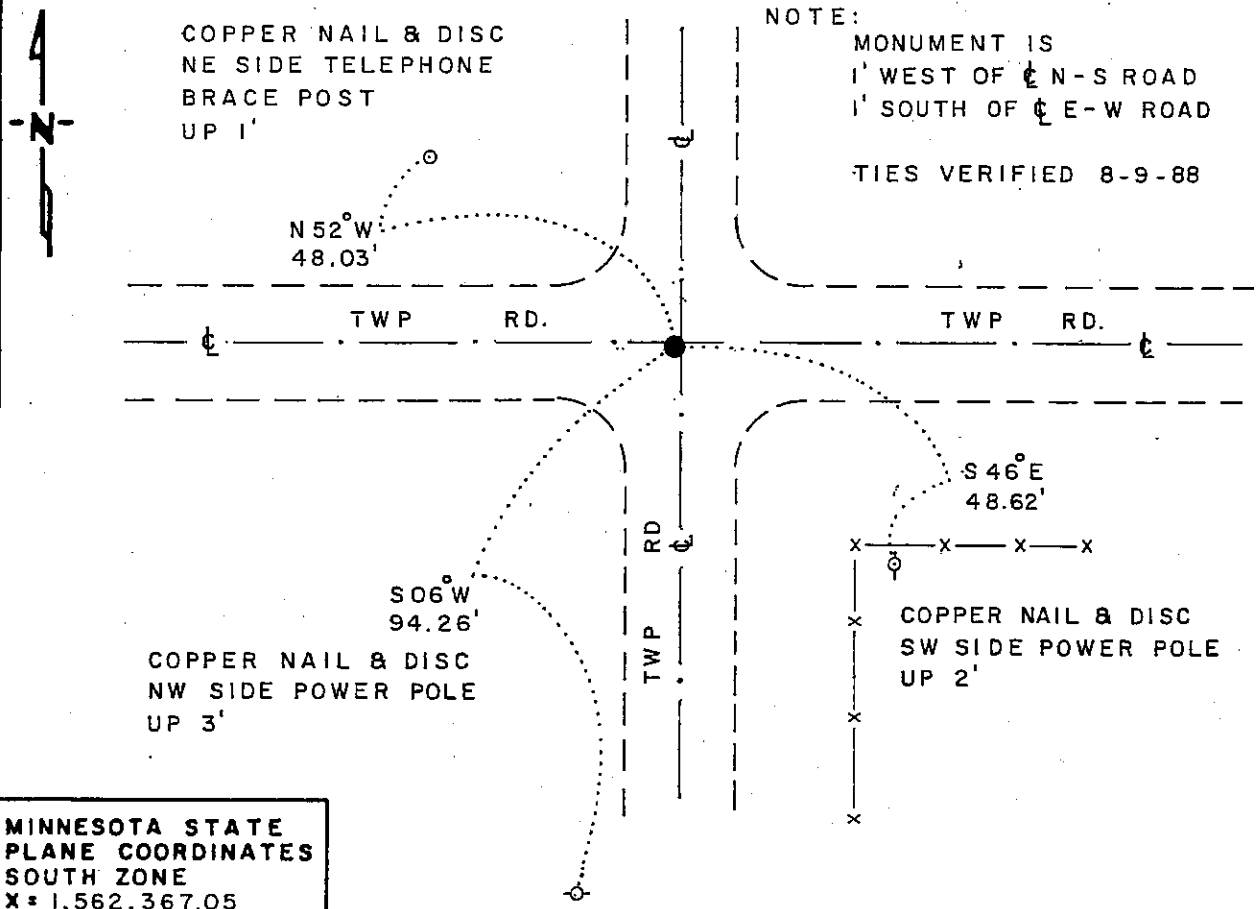
NORTHEAST Corner of Section 17, Township 102N, Range 40 W, 5th P.M.

STATE OF MINNESOTA, County of NOBLES

At the corner location shown on the sketch:

- On 6-26-84 found a 3/4" x 22" IRON ROD, DOWN 0.3', OVER A 6" x 9" x 10" STONE, DOWN 24"
DATE
- left monument as found, lowered monument, removed monument (explain)
- On 6-26-84 placed a 1 1/4" x 1 1/4" x 20" PERFORATED STEEL TUBE WITH ALUMINUM CAP STAMPED "DNR SURVEY MARKER", OVER STONE, DOWN 0.4
DATE

SKETCH OF REFERENCE TIES



MINNESOTA STATE
 PLANE COORDINATES
 SOUTH ZONE
 X = 1,562,367.05
 Y = 239,691.97

BEARINGS OBSERVED WITH COMPASS

Statement of evidence relative to this corner location is on back of page

J.B.M. 8-29-88
G-965

I hereby certify that this document and the data contained herein was prepared by me or under my direct supervision

Lowell R. Pommeroy 9-20-88
SIGNATURE DATE

Registration No. 17005

Land Surveyor, Professional Engineer

County Surveyor, County Engineer

OFFICE OF THE COUNTY RECORDER

County of Nobles

I hereby certify that this document was filed in the Co. Recorders office at 4:05 P.M. on the 21st day of September A.D., 1988

County Recorder James Howard

By _____, Deputy

DOCUMENT NO. 234937

Northeast Corner Section 17, Township 102 North, Range 40 West

The DNR Bureau of Engineering contacted the following offices for survey information on this corner:

MN Secretary of State
Nobles County Recorder and Highway Engineer
Mn/DOT at Windom
Martin Land Surveying at Worthington
Rieke-Carroll-Muller

- 1868 The U.S. General Land Office notes in the Secretary of State's Office show the corner is a post, set in a mound with pits.
- 1897 Surveyor's Record Book A-2, on page 244, obtained from the County Recorder's Office, contains a survey by Milton S. Smith, County Surveyor. Survey shows a stone at this corner which measures 2693 ft. from the north quarter corner Section 16.
- 1901 Surveyor's Record Book A-2, on page 454, obtained from the County Recorder's Office, contains a survey by Milton S. Smith, County Surveyor. Survey shows a stone at this corner which measures:
2680.5 ft. from the north quarter corner Section 17
5361.0 ft. from the northeast corner Section 18
- 1935 A Surveyor's certificate of public highway corners, obtained from the County Highway Engineer, shows the corner was evidenced by a stone monument. Placed a 2" by 2" hub on top of stone, top of hub at surface of ground. Two reference ties are shown.
- 1959 A Field Book of ties and monuments of government corners, obtained from the County Highway Engineer, shows a stone at this corner. Placed an iron pin and took four reference ties.
- 1980 February, field notes and worksheet, obtained from Martin Land Surveying, shows a 1/2" iron bar found at this corner. Iron bar is
on center line north-south road
1 ft. south of center line east-west road
2639.27 ft. from the east quarter corner Section 8
- 1984 June 26, the DNR Bureau of Engineering hired a backhoe (Suby Backhoe of Worthington) to dig for evidence of this corner. Found a 3/4" by 22" iron rod, down 0.3 ft. over a 6" by 9" by 10" stone down 24". Left stone as found and set a 1" by 6" channel pipe on its east side flush with its top. Replaced the iron rod with a DNR Survey Marker. Corner is:
1 ft. west of center line north-south road
1 ft. south of center line east-west road
2639.29 ft. from the east quarter corner Section 8
2680.07 ft. from the north quarter corner Section 17

Analysis of the available information led the DNR Bureau of Engineering to conclude that the found stone and iron rod marks the location of the corner.

- 1988 August, the DNR Bureau of Engineering revisited the corner and found the DNR Survey Marker, as previously set, in good condition.