

CERTIFICATE OF LOCATION OF GOVERNMENT CORNER

NORTHEAST Corner of Section 17, Township 102N, Range 40W, 5TH P.M.

STATE OF MINNESOTA, County of NOBLES

At the corner location shown on the sketch :

On 3 OCTOBER 2000 found DNR SURVEY MARKER BENT TO THE EAST

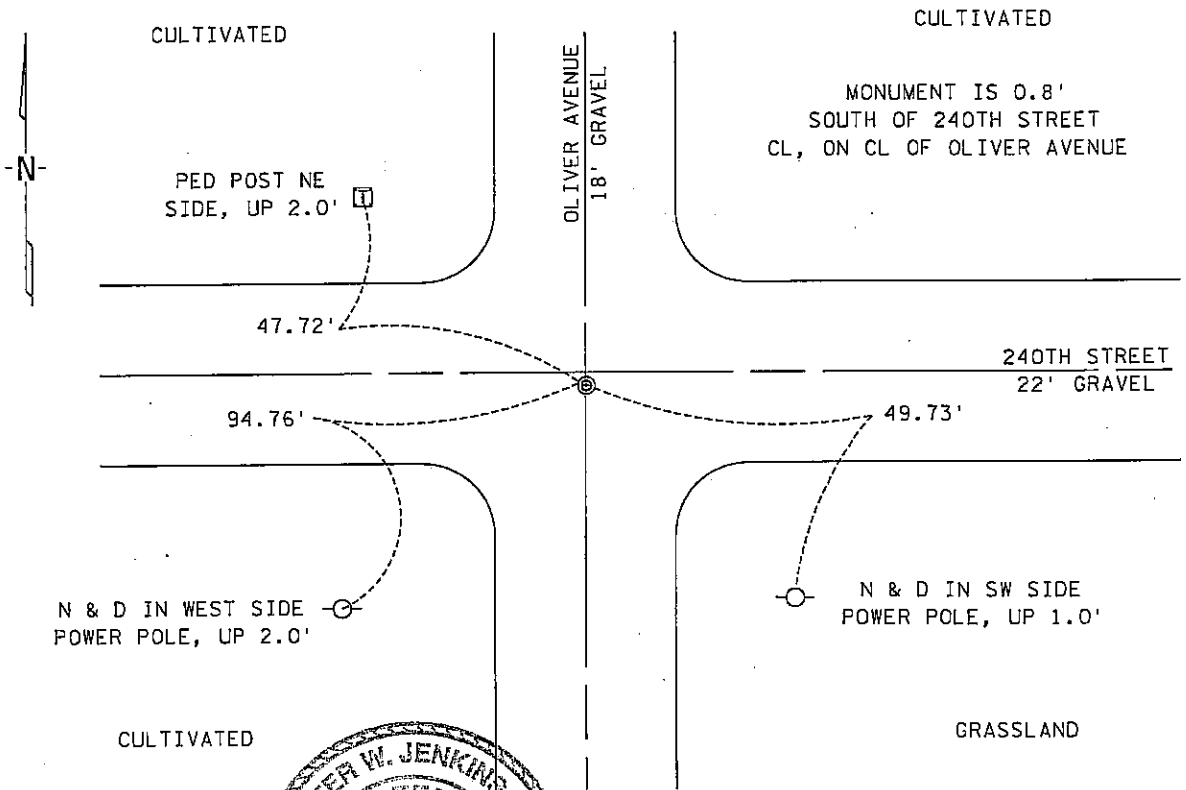
left monument as found,  lowered monument,  removed monument (explain)

On \_\_\_\_\_ set \_\_\_\_\_

SEC 8-102N-40W

Sketch of reference ties

SEC 9-102N-40W



SEC 17-102N-40W

SEC 16-102N-40W

Statement of evidence relative to this corner location is on back page

I hereby certify that this document and the data contained herein was prepared by me or under my direct supervision.

Peter W. Jenkins 6 Dec 00  
Signature Date

Registration No. 22683

Land Surveyor,  Professional Engineer

County Surveyor,  County Engineer

OFFICE OF THE COUNTY RECORDER

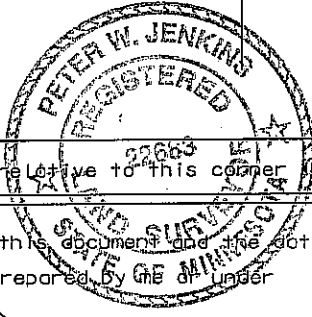
County of Nobles

I hereby certify that this document was filed in the Co. Recorder's office at 8:45 A.M. on the 19th day of December, 2000. A.D., 2000

County Recorder Jane Howard  
By \_\_\_\_\_, Deputy

DOCUMENT NO. 281818

TRACKED & COMPARED  
PHOTO Edm  
FEE 500



Statement of Evidence:

NORTHEAST CORNER  
SECTION 17, TOWNSHIP 102 NORTH, RANGE 40 WEST  
5th PRINCIPAL MERIDIAN, MINNESOTA

- 25 Sept. 1868 -R.H.L. Jewett & George G. Howe, U.S. Deputy Surveyors, "North bet. Sec's. 16 & 17" @ 80.00 chs. "Set post for Cor. to Secs. 8, 9, 16 & 17 in mound with pits." No ties.
- 25 July 1891 -Nobles County Recorder's Office, Surveyor's Record, Volume A-2, Page 88, by Milton S. Smith, County Surveyor, for a survey in Sec. 16-102-40, shows a set stone for the Northwest Corner.
- 29 Apr. 1892 -Nobles County Recorder's Office, Surveyor's Record, Volume A-2, Page 54, by Milton S. Smith, County Surveyor, for a survey in Sec. 16-102-40, states that a stone was set for the Northwest Corner with a distance of 2650.6' south to the West Quarter Corner.
- 16 Apr. 1897 -Nobles County Recorder's Office, Surveyor's Record, Volume A-2, Page 244, by Milton S. Smith, County Surveyor, for a survey in Sec. 9-102-40, shows a stone for the Southwest Corner with a distance of 2693' east to the South Quarter Corner.
- 29 May 1901 -Nobles County Recorder's Office, Surveyor's Record, Volume A-2, Page 454, by Milton S. Smith, County Surveyor, for a survey in Sec. 8-102-40, shows a stone for the Southeast Corner with a distance of 2681.5' west to the South Quarter Corner.
- Circa 1935 -Nobles County Highway Department, Section Corner Ties for Worthington Twp., shows a stone for the Southwest Corner of Sec. 9-102-40.
- Circa 1959 -Nobles County Highway Department, Section Corner Ties for Worthington Twp., shows a stone for the Southwest Corner of Sec. 9-102-40 and a iron pin was placed with ties: Fence Post 53.55' NW; CFP 43.72' SW; Fence Post 50.00' SE; Fence Post 46.88' NE.
- 7 May 1959 -Minnesota Highway Department, Land Tie Field Notes for I-90, SP 5380, states that a rock was found, down 2.5' for the Northeast Corner of Sec. 17-102-40 and placed a 5/8" iron pin.
- 21 Feb. 1978 -Minnesota Highway Department, Land Tie Field Notes for I-90, SP 5380-01, find a spike, down 0.2' near the center lines of gravel township roads east-west and to the northwest and found ties in fence post NW and SE.
- February 1980 -Martin Land Surveying, Inc., of Worthington, Minnesota, by Gary D. Martin, RLS # 12967, field notes and worksheet show a 1/2" iron bar found at the Northeast Corner of Sec. 17-102-40 and is 1' south of centerline of north-south road and 2639.27' south from the East Quarter Corner of Sec. 8-102-40.
- 13 Oct. 1981 -MnDOT, Certificate of Location of Gov't Corner for Northeast Corner of Sec. 17-102-40, not recorded, states that they found a 3/4" iron pin over 6" X 6" X 12" stone, down 2', over the rotten remains of wood stake down 3'. Ties include: SRP in Tel. Ped. Post 48.00' NW; SRP in PP 48.65' SE; SRP in PP 94.33' SW.

281818

NORTHEAST CORNER  
SECTION 17, TOWNSHIP 102 NORTH, RANGE 40 WEST  
5th PRINCIPAL MERIDIAN, MINNESOTA  
Continued

- 26 June 1984 -Nobles County Recorder's Office, Certificate of Location of Gov't Corner, by Lowell R. Pommerening, RLS # 17005, states that the DNR hired a backhoe to dig for the Northeast Corner of Sec. 17-102-40 and found a 3/4" X 22" iron rod, down 0.3' over a 6" X 9" X 10" stone, down 24", left stone and set a 1" X 6" channel pipe on the east side and flush with top of stone, then replaced iron rod with "DNR SURVEY MARKER", the corner is 1' west of centerline of north-south road, 1' south of centerline of east-west road and measured 2639.29' south from the East Quarter Corner of Sec. 8-102-40 and 2680.07' east from the North Quarter Corner of Sec. 17-102-40. In August 1988 the DNR returned to the site and found the monument to be in good condition.
- 9 Apr. 1987 -Nobles County Recorder's Office, Document No. 230010, a Resolution by the Town Board of Worthington Township, declaring 66 foot wide easements for roads where the centerline of said easements incorporate the section lines and corners.
- 3 Oct. 2000 -MnDOT survey crew found a DNR aluminum cap stamped "DNR SURVEY MARKER", down 0.4' and bent to the east near the intersection of gravel roads east-west and north-south road, the ties per 1984 Certificate are still in place but the distances disagree slightly.

The evidence is not conclusive as to the true corner location, however the written, occupational and collateral evidence suggest that this is a reasonable location as to the corner. Additional information regarding the preparation of this certificate can be obtained by contacting: Survey Section, Minnesota Department of Transportation, 501 South Victory Drive, P.O. Box 4039, Mankato, MN 56002-4039.

