

# CERTIFICATE OF LOCATION OF GOVERNMENT CORNER

NORTHEAST Corner of Section 18, Township 102 N, Range 40 W, 5th P.M.

STATE OF MINNESOTA, County of NOBLES

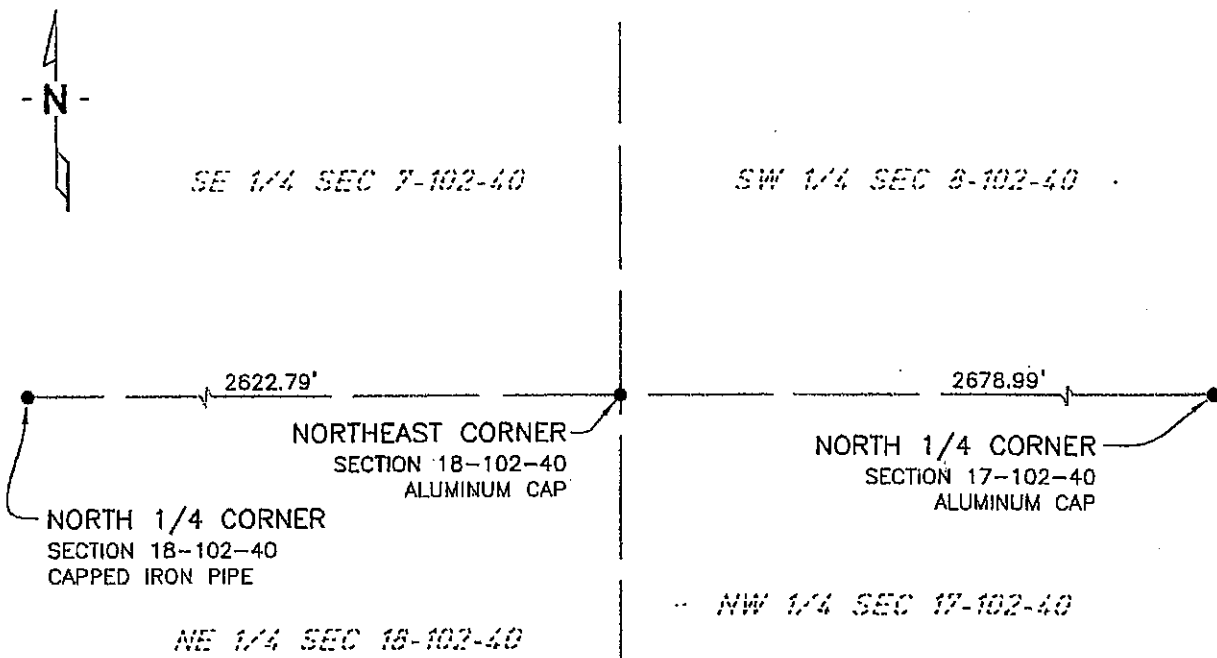
At the corner location shown on the sketch:

On 7/15/03 found a ALUMINUM CAP  
DATE

left monument as found,  lowered monument,  removed monument (explain)

On \_\_\_\_\_ placed a \_\_\_\_\_  
DATE

### SKETCH OF REFERENCE TIES



NAD83 (1996 ADJUSTMENT)  
STATE PLANE COORDINATES  
NOBLES COUNTY DATUM

N= 153142.337  
E= 573108.876

BOOK: 110 PG. 42  
I:\NOBLS\CERTIFICATES\2005\CAD\NE18-102-40

Statement of evidence relative to this corner location is on back of page.

I hereby certify that this document and the data contained herein was prepared by me or under my direct supervision.

Janele Fowlds 4-24-06  
JANELE FOWLDS DATE

Registration No. 26748

- Land surveyor,  Professional Engineer
- County Surveyor,  County Engineer

### OFFICE OF THE COUNTY RECORDER

County of \_\_\_\_\_

I hereby certify that this document was filed in the Co. Recorders office at \_\_\_\_\_ M. on the \_\_\_\_\_ day of \_\_\_\_\_ A.D., 19\_\_\_\_

County Recorder \_\_\_\_\_

By \_\_\_\_\_, Deputy

DOCUMENT NO. \_\_\_\_\_

Statement of Evidence

Northeast Corner Section 18, Township 102 North, Range 40 West

Original Notes

- 1901 Nobles County Highway Department records show a stone monument.
- 1935 Nobles County Highway Department records show a stone monument, and also placed a wood stake.
- 1959 Nobles County Highway Department records show a wood stake, and also placed an iron pin, has the following ties,  
Power Pole – Northwest 48.60'  
Power Pole – Northeast 42.82'  
Cor FE Post – Southeast 46.56'  
FE Post – Southwest 35.05'
- 1984 A preliminary certificate of location of government corner prepared by, Madsen Land Surveying Inc., Fairmont, shows a wood stake found over a stone. Madsen placed a 1 1/4" square tube with aluminum cap, stamped DNR survey marker, over stone. The ties are as follows:  
Nail & Disk in SE side Power Pole – Northeast 43.00'  
Nail & Disk in SW side Power Pole – Southeast 43.03'  
Nail & Bottle Cap in NW side Power Pole – Southwest 56.05'
- 1987 A survey, from Bell Surveying Inc., Worthington, shows a found monument. There was no description of monument at this location.
- 2003 On July 16, Bolton & Menk, Inc., Mankato, found an, aluminum capped, iron pipe 0.6 foot below surface of a township road.