

CERTIFICATE OF LOCATION OF GOVERNMENT CORNER

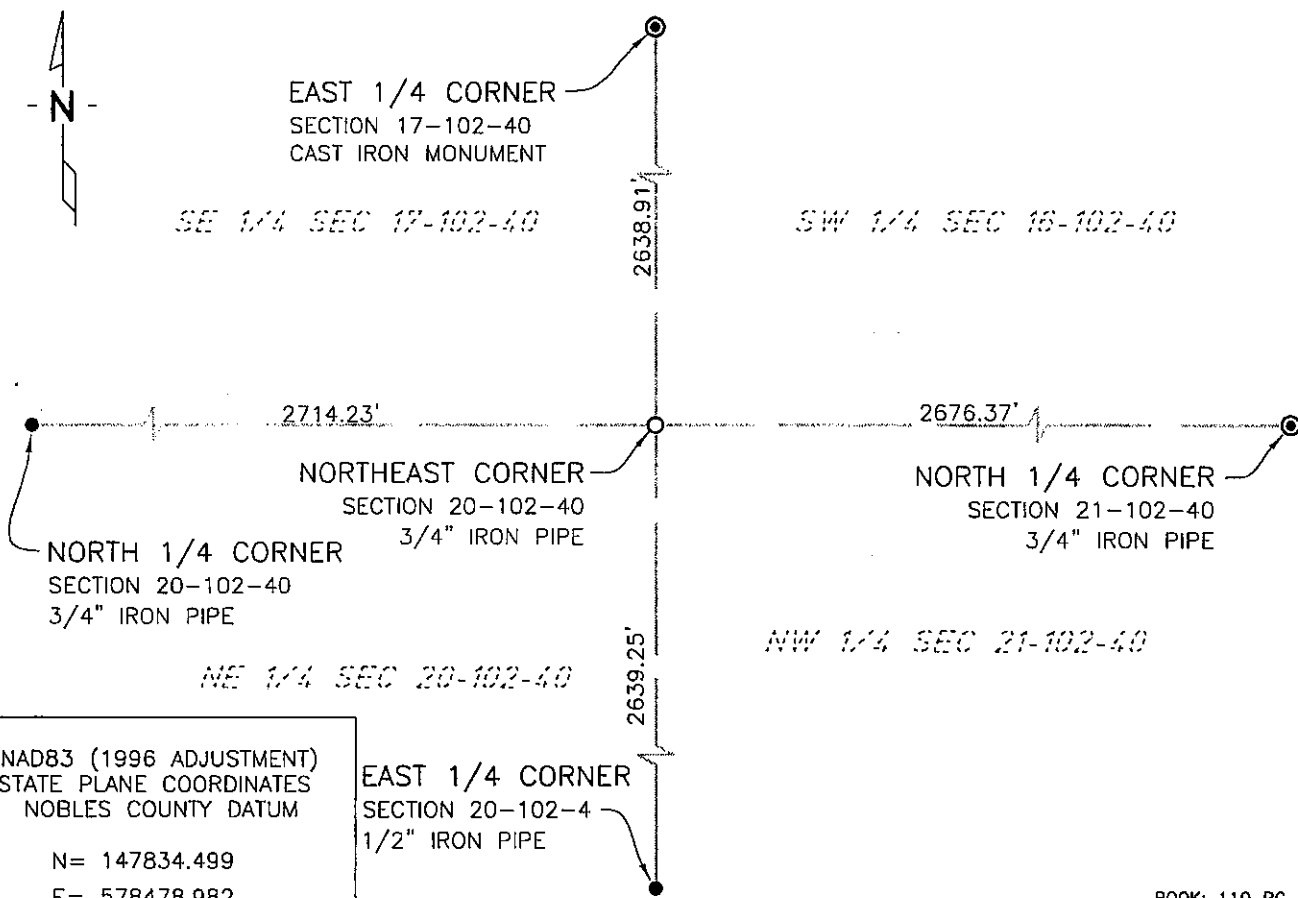
NORTHEAST Corner of Section 20, Township 102 N, Range 40 W, 5th P.M.

STATE OF MINNESOTA, County of NOBLES

At the corner location shown on the sketch:

- On 7/16/03 found a 5/8" REROD
DATE
- left monument as found, lowered monument, removed monument (explain)
- On 1/25/06 placed a 3/4" IRON PIPE MONUMENT
DATE

SKETCH OF REFERENCE TIES



NAD83 (1996 ADJUSTMENT)
STATE PLANE COORDINATES
NOBLES COUNTY DATUM

N= 147834.499
E= 578478.982

EAST 1/4 CORNER
SECTION 20-102-4
1/2" IRON PIPE

BOOK: 110 PG. 43
I:\NOBLES\CERTIFICATES\2005\CAD\NE20-102-40

Statement of evidence relative to this corner location is on back of page.

I hereby certify that this document and the data contained herein was prepared by me or under my direct supervision.

Janele Fowlds 4-24-06
JANELE FOWLDS DATE

Registration No. 26748

- Land surveyor, Professional Engineer
- County Surveyor, County Engineer

OFFICE OF THE COUNTY RECORDER

County of _____

I hereby certify that this document was filed in the Co. Recorders office at ____M. on the _____ day of _____ A.D., 19__

County Recorder _____

By _____, Deputy

DOCUMENT NO. _____

Statement of Evidence

Northeast Corner Section 20, Township 102 North, Range 40 West

Original Notes

- 1914 Nobles County Highway Department records show a stone monument.
- 1917 Nobles County Highway Department records show a stone monument.
- 1959 Nobles County Highway Department records show an "X" in concrete with the following ties:
R/W Marker – Northwest 64.58'
R/W Marker – Southwest 66.50'
Cor FE Post – Southeast 112.48'
- 2003 On July 16, Bolton & Menk, Inc., Mankato, found a 5/8" rerod at the surface of a county road.
- 2006 On January 25, Bolton & Menk, Inc., Fairmont, set a 3/4" x 18" iron pipe monument 4 feet south of centerline of C.S.A.H. 35 and 3 west of the centerline of a township road to south. The iron pipe was placed at the location of the previously found 5/8" rerod. The rerod was lost due to road construction.