

CERTIFICATE OF LOCATION OF GOVERNMENT CORNER

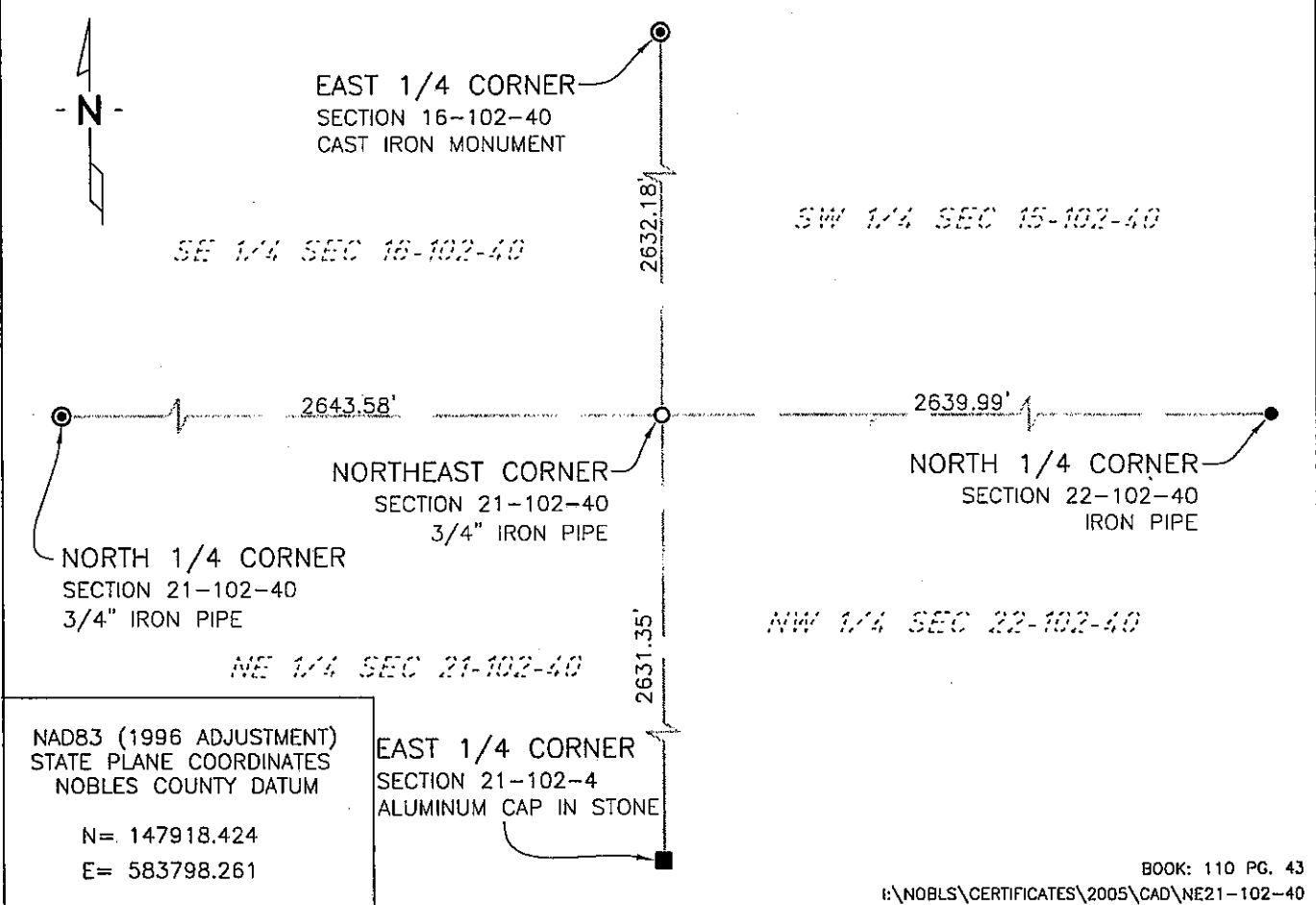
NORTHEAST Corner of Section 21, Township 102 N, Range 40 W, 5th P.M.

STATE OF MINNESOTA, County of NOBLES

At the corner location shown on the sketch:

- On 7/16/03 found a CAST IRON MONUMENT
DATE
- left monument as found, lowered monument, removed monument (explain)
- On 1/17/06 placed a 3/4" IRON PIPE MONUMENT
DATE

SKETCH OF REFERENCE TIES



Statement of evidence relative to this corner location is on back of page.

I hereby certify that this document and the data contained herein was prepared by me or under my direct supervision.

Janele Fowlds 4-24-06
JANELE FOWLDS DATE

Registration No. 26748

- Land surveyor, Professional Engineer
- County Surveyor, County Engineer

OFFICE OF THE COUNTY RECORDER

County of _____

I hereby certify that this document was filed in the Co. Recorders office at ____ M. on the _____ day of _____ A.D., 19____

County Recorder _____

By _____, Deputy

DOCUMENT NO. _____

Statement of Evidence

Northeast Corner Section 21, Township 102 North, Range 40 West

Original Notes

- 1892 Nobles County Highway Department records show a stone monument.
- 1989 A survey, from Bell Surveying Inc., Worthington, shows a cast iron monument found.
- 1978 MN/DOT research and found a 16x7x8 inch stone with an "X" down 5.3 feet. The stone is in the centerline of road to north and fence to south. No other disputing evidence was found and the stone is accepted as the corner. They placed a cast iron monument over "X" in stone. The evidence was recorded on September 15. The ties are as follows:
NE Cor Elec. Trans. Box – Northwest 55.75'
PK Nail in CL Road – South 39.10'
Nail & Disk in Tel Ped Post – Northeast 48.09'
Nail & Disk in West end 18" CMP – Northwest 17.40'
Nail & Disk in East end 18" CMP – Northeast 23.15'
- 1994 Nobles County Highway Department records show a cast iron monument found by Madsen Land Surveying Inc., Fairmont, 12" deep, with the following ties:
NE Cor Elec. Trans. Box – Northwest 56.15'
CL of Road – South 39.00'
SRP in Tel Ped Post – Northeast 47.95'
- 1998 Field notes received by Madsen Land Surveying Inc., Fairmont, shows a cast iron monument was found 12" deep, with the following ties:
NE Cor Elec. Trans Box – Northwest 56.22'
Dead End Sign Post – Northeast 23.86'
Hwy 10 Sign Post – South 72.27'
CL Road E&W – South 39.0'
CL Road N – East 2.0'
- 2003 On July 16, Bolton & Menk, Inc., Mankato, found a cast iron monument 0.8 deep.
- 2006 On January 17, Bolton & Menk, Inc. Fairmont, placed a ¾" x 18 iron pipe monument which is 31 feet north of the centerline of C.S.A.H. 35, and feet west of township road to the north. The iron pipe was placed at the previously located cast iron monument. The monument was lost due to construction.