

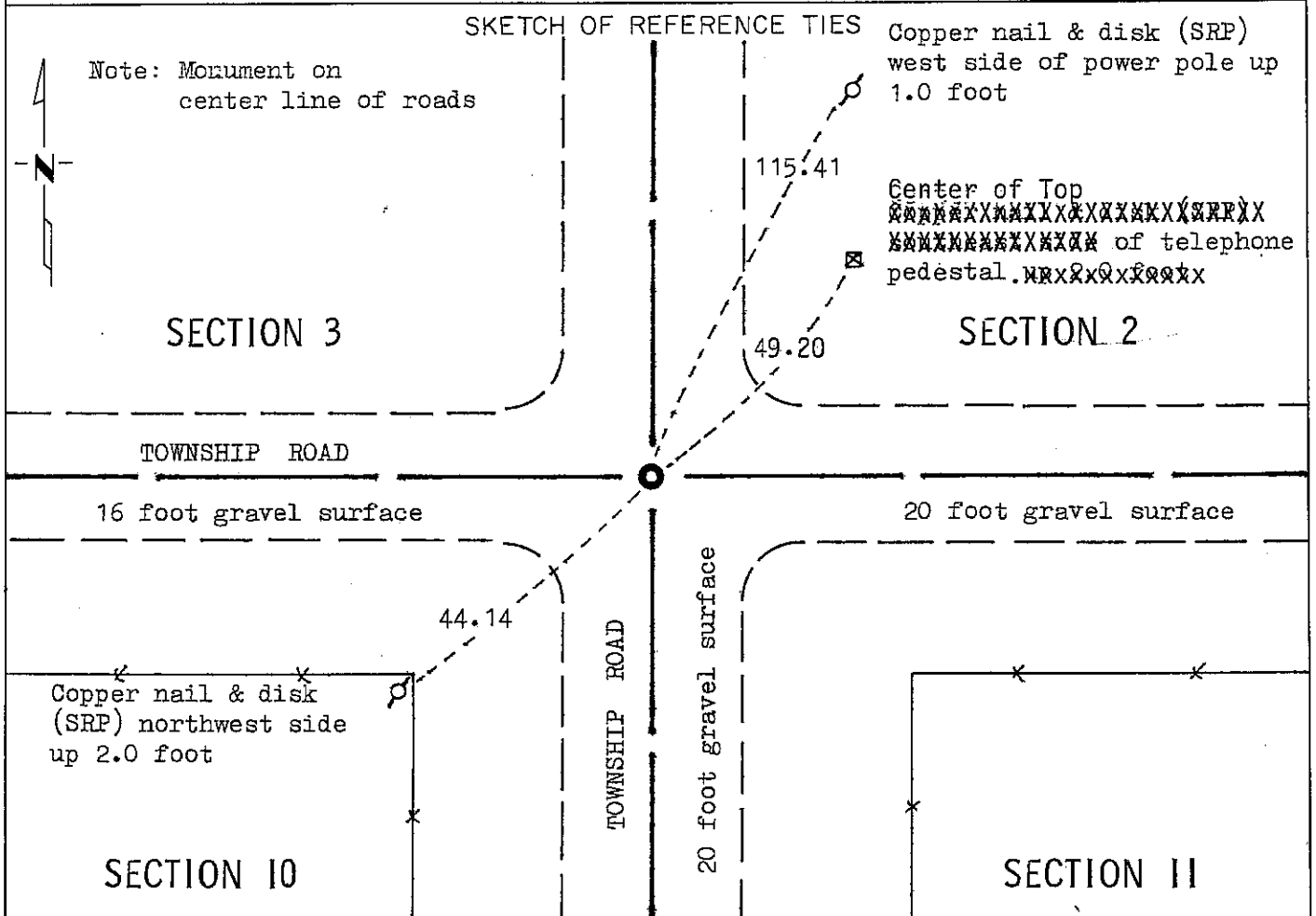
# CERTIFICATE OF LOCATION OF GOVERNMENT CORNER

**NORTHEAST** Corner of Section 10, Township 102N, Range 40W, 5 P.M.

STATE OF MINNESOTA, County of NOBLES

At the corner location shown on the sketch:

- On Nov. 6, 1981 found a 2 inch by 2 inch by 12 inch wood stake down 0.6 foot DATE directly over a 12 inch by 12 inch by 18 inch stone  
 left monument as found,  lowered monument,  removed monument (explain)
- On Nov. 6, 1981 placed a M.H.D. cast iron monument down 0.2 foot over stone. DATE  
"+" in cast iron monument



Statement of evidence relative to this corner location is on back of page.

I hereby certify that this document and the data contained herein was prepared by me or under my direct supervision.

Allan E. Schorn 10-15-92  
SIGNATURE      DATE

Registration No. 11858

- Land Surveyor,  Professional Engineer
- County Surveyor,  County Engineer

OFFICE OF THE COUNTY RECORDER

County of Nobles

I hereby certify that this document was filed in the Co. Recorders office at 9:05 A.M. on the 21st day of October A.D., 19 92

County Recorder James Howard

By \_\_\_\_\_, Deputy

DOCUMENT NO. 249756

Statement of Evidence: Northeast Corner of Section 10, T102N, R40W, 5th P.M.

- Sept. 24, 1868 The original Government Survey of the Township subdivision was run in 1868 by George G. Howe and Richard H. Jewett, Deputy Surveyors, and their notes read, "Set post in mound with pits for corner to secs. 2, 3, 10 & 11".
- Apr. 30, 1894 Milton S. Smith, Nobles County Surveyor, made a survey in all of Section 10. His notes indicate "Set Stone" at northeast corner.
- Oct. 17, 1903 Milton S. Smith, Nobles County Surveyor, notes on a plat indicate "Stone" 2648.8 feet to North Quarter Corner stone of Section 11.
- Nov. 24, 1916 William A. Saxon, Nobles County Surveyor, made a survey in Section 3. The survey record shows, "Sec. Cor. old stone" at the southeast corner.
- Nov. 6, 1981 A Minnesota Department of Transportation field survey crew using a tractor backhoe found a 2 inch by 2 inch by 12 inch wood stake directly over a 12 inch by 12 inch by 18 inch stone down 1½ feet below the surface of the road. The wood stake was removed and the upper portion of a Minnesota Highway Department cast iron monument was placed directly over the stone.
- Dec. 12, 1991 Al Schafer, with the Minnesota Department of Transportation, and survey crew found the monument and two of the ties. The telephone pedestal had been replaced and he retied it into the new pedestal.

The in-place location of the stone is compatible with the occupation lines within the section. An analysis of the Statement of Evidence and the field measurements indicate that the stone is in a reasonable location. I therefore accept the monument as the location of the land corner.

For additional information, including field measurements and photographs, contact the Minnesota Department of Transportation in Windom.