

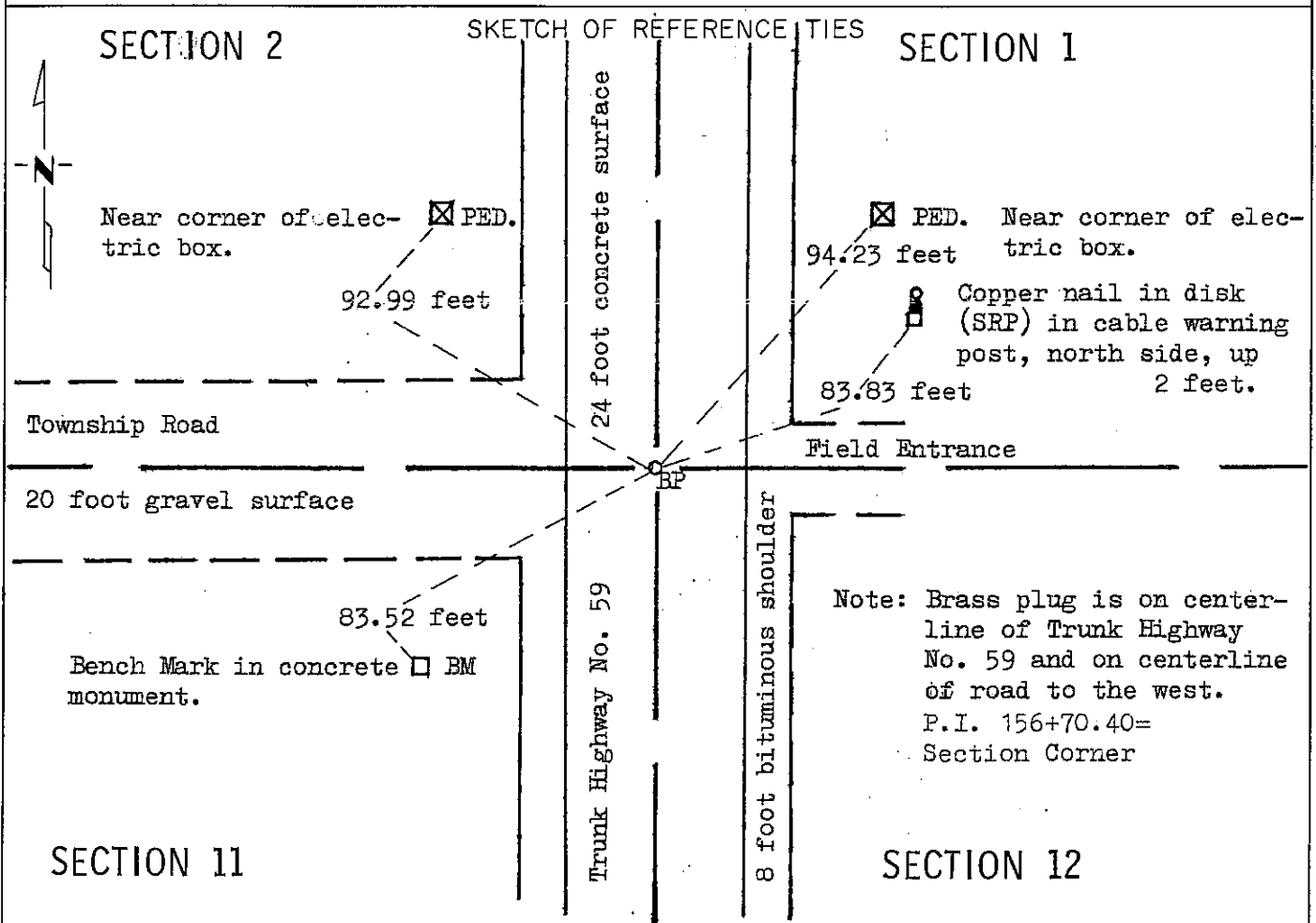
# CERTIFICATE OF LOCATION OF GOVERNMENT CORNER

NORTHEAST Corner of Section 11, Township 102 N, Range 40 W, 5 P.M.

STATE OF MINNESOTA, County of NOBLES

At the corner location shown on the sketch:

- On June 30, 1980 found a 30 inch concrete monument with aluminum disk, down 1.5  
DATE feet. Bottom of monument down 4 feet in natural ground.
- left monument as found,  lowered monument,  removed monument (explain)
- On Aug. 4, 1980 placed a brass plug above concrete monument.  
DATE



Statement of evidence relative to this corner location is on back of page.

I hereby certify that this document and the data contained herein was prepared by me or under my direct supervision.

Allan E. Spoon 10-15-92  
SIGNATURE DATE

Registration No. 11858

- Land Surveyor,  Professional Engineer
- County Surveyor,  County Engineer

OFFICE OF THE COUNTY RECORDER

County of Nobles

I hereby certify that this document was filed in the Co. Recorders office at 9:20 A.M. on the 21st day of October A.D., 19 92

County Recorder Jay Howard

By \_\_\_\_\_, Deputy

DOCUMENT NO. 249759

Statement of Evidence: Northeast Corner of Section 11, T102N, R40W, 5th P.M.

- Sept. 25, 1868 The original Government Land Survey was run in 1868 by George G. Howe, Deputy Surveyor, and his notes read, "Set post in mound with pits for corner to Sections 1, 2, 11 & 12".
- Aug. 22, 1891 Milton S. Smith, Nobles County Surveyor, did a survey of Section 2 and 35. The Southwest corner of Section 2 is noted as "gone".
- May 23, 1894 Milton S. Smith, Nobles County Surveyor, made a survey of Section 12. Record of survey indicates "Stone" is 370 feet west of small stream.
- May 11, 1895 (No Name) Made a survey on Section 1. Record of this survey indicates a "Stone" at the southwest corner.
- Oct. 17, 1903 M.S. Smith, Nobles County Surveyor, made a survey of Section 11 and his notes indicate a stone at the northeast corner.
- May 20, 1929 Minnesota Highway Department notes state, "Sec. Cor. stone inplace." and the notes also state "Sec. Cor. inplace Conc. Mon.".
- 1955 Minnesota Highway Department records state, "Stone at P.I." = Sec. Cor. and also states "Brass plug centerline at P.I.".
- June 30, 1980 Minnesota Department of Transportation field survey crew using a tractor backhoe found an aluminum disc in the top of a 30 inch concrete monument down 1½ feet below the surface of the gravel base.
- Aug. 4, 1980 A Minnesota Department of Transportation field survey crew placed a brass plug at the surface of the concrete pavement and directly over the aluminum disc.
- Dec. 12, 1991 Al Schafer, with the Minnesota Department of Transportation, and crew found the aluminum disc in the top of a 30 inch concrete monument and reference ties inplace.

The inplace location of the aluminum disc in the top of a 30 inch concrete monument is compatible with the occupation lines within the section. An analysis of the Statement of Evidence and the field measurements indicate that the aluminum disc in the top of a 30 inch concrete monument is in a reasonable location. I therefore accept the monument as the location of the land corner as noted by Smith in 1894.

For additional information, including field measurements and photographs, contact the Minnesota Department of Transportation in Windom.