

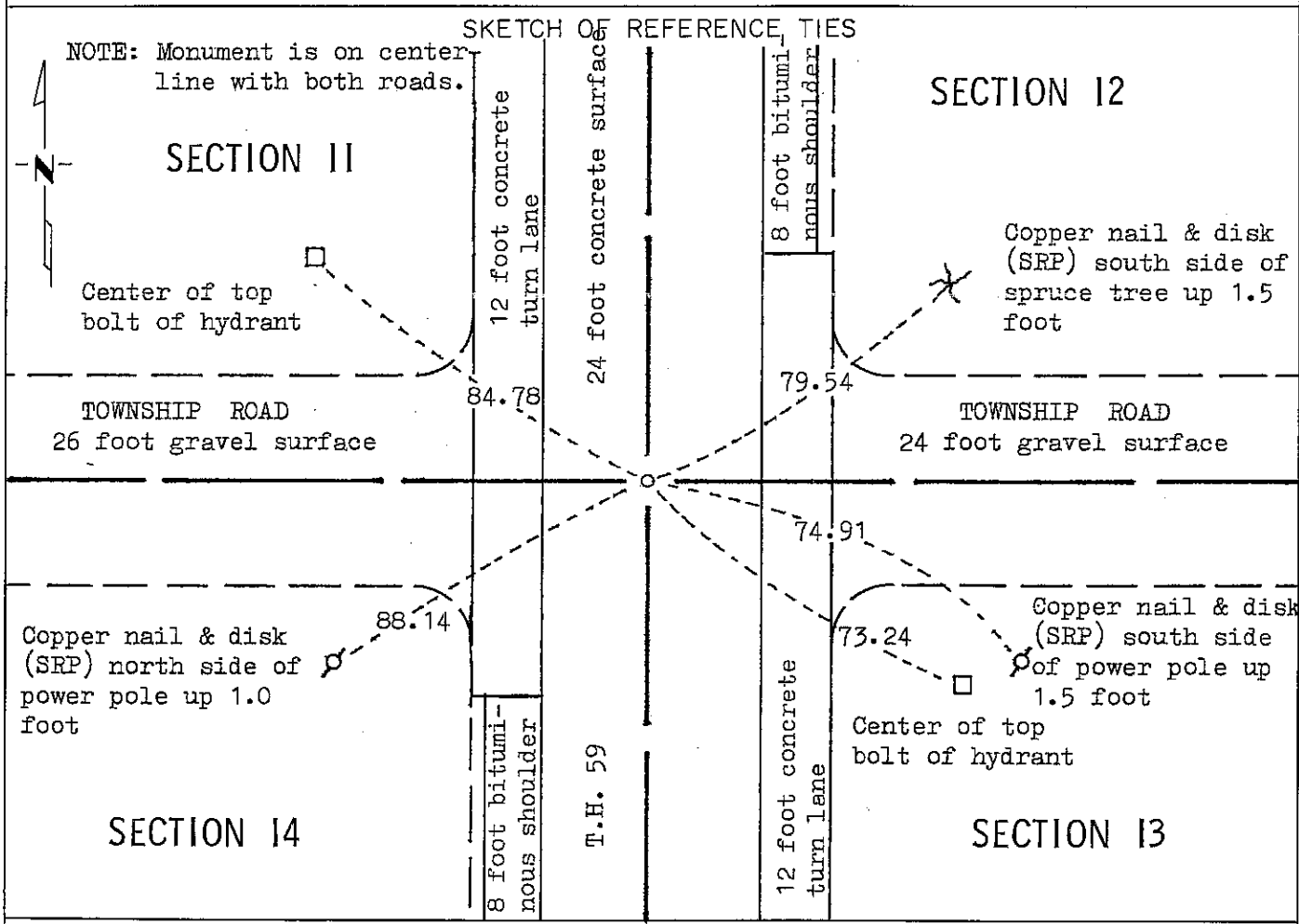
CERTIFICATE OF LOCATION OF GOVERNMENT CORNER

NORTHEAST Corner of Section 14, Township 102N, Range 40W, 5 P.M.

STATE OF MINNESOTA, County of NOBLES

At the corner location shown on the sketch:

- On June 30, 1980 found a 7/8 inch by 12 inch iron pin down 1.0 foot over high
DATE
point of 10 inch by 8 inch by 22 inch stone down 2.0 foot
- left monument as found, lowered monument, removed monument (explain)
- On Aug. 22, 1980 placed a brass plug
DATE



Statement of evidence relative to this corner location is on back of page.

I hereby certify that this document and the data contained herein was prepared by me or under my direct supervision.

Allan E. Schorn SIGNATURE 10-15-92 DATE

Registration No. 11858

- Land Surveyor, Professional Engineer
- County Surveyor, County Engineer

OFFICE OF THE COUNTY RECORDER

County of Nobles

I hereby certify that this document was filed in the Co. Recorders office at 2:45 P. M. on the 22nd day of October A.D., 1992

County Recorder Jay Howard

By _____, Deputy

DOCUMENT NO. 249779

Statement of Evidence: Northeast Corner of Section 14, T102N, R40W, 5th P.M.

- Sept. 25, 1868 The original Public Land Survey was run in 1868 by George G. Howe, Deputy Surveyor, and his notes read, "Set post in mound with pits for corner to 11, 12, 13 & 14".
- May 23, 1894 Milton S. Smith, Nobles County Surveyor, did a survey in Section 12, plat of survey shows there is a "stone" at the southwest corner and also "trees set for 6 rd. road". Smith used this stone in the breakdown of Section 12.
- Apr. 21, 1902 M.S. Smith, Nobles County Surveyor, did a survey in Section 13 and the survey plat shows a "stone" at the northwest corner.
- Sept. 17, 1903 M.S. Smith, Nobles County Surveyor, survey plat of Section 11 indicates there is a "stone" at the southwest corner.
- Oct. 29, 1914 William A. Saxon, Nobles County Surveyor, made a survey of the southwest quarter of Section 13. Plat reads, "Sec. Cor. old stone".
- Oct. 19, 1927 Minnesota Highway Department survey for relocation of T.H. 59 notes read, "Stone Mon. in place Sec. Cor.".
- May 20, 1929 Minnesota Highway Department survey notes call it a "Field Stone".
- 1930 G.D. McMurtry, Nobles County Surveyor, made a survey in the northeast quarter of Section 14 to lay out the original Worthington Airport. He used a "R.R. spike" for the northeast corner.
- 1935 Nobles County Highway Department records indicate "Stone in place".
- 1954 Nobles County Highway Department records read, "Stone" placed "Iron Pin".
- 1955 Minnesota Highway Department construction plans read, "+" on stone down 2 feet at P.I. = Section corner. "Placed B.P."
- 1978 Minnesota Department of Transportation survey notes read, "Brass plug in C.L.".
- June 30, 1980 Minnesota Department of Transportation field survey crew using a tractor backhoe found a 7/8 inch by 12 inch iron pin, down 1 foot, over the high point of a 10 inch by 8 inch by 22 inch stone down 2 feet and below natural ground line.
- Aug. 22, 1980 A Minnesota Department of Transportation field survey crew placed a brass plug at the surface of the concrete pavement and directly over the high point of the stone.
- Dec. 12, 1991 Al Schafer, with the Minnesota Department of Transportation, and crew found the brass plug and four of the ties in place.

An analysis of the Statement of Evidence and the field measurements indicate that the in place location of the stone and brass plug provides a continuous chain of perpetuation of the original Public Land Survey corner.

For additional information, including field measurements and photographs, contact the Minnesota Department of Transportation in Windom.