

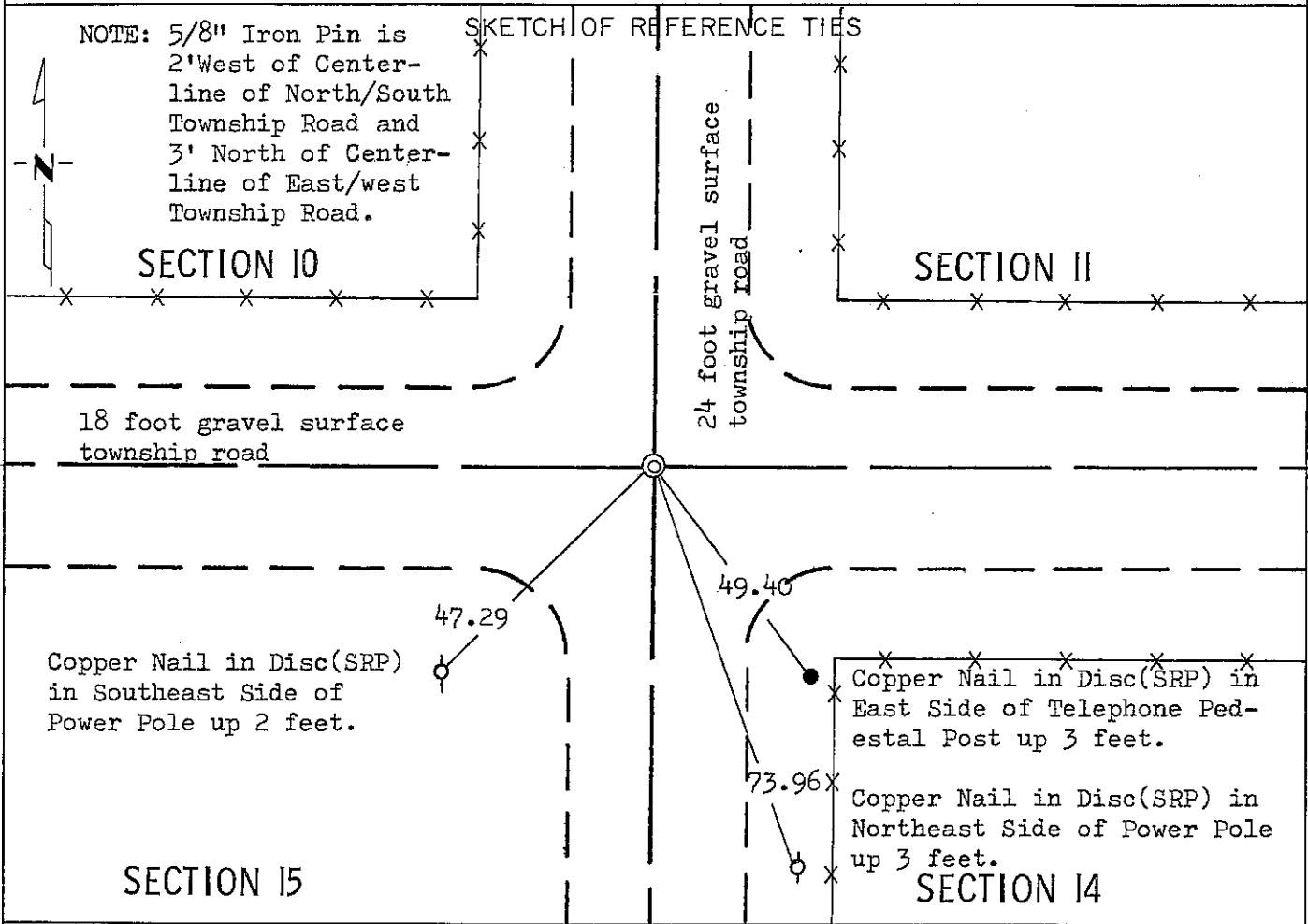
CERTIFICATE OF LOCATION OF GOVERNMENT CORNER

NORTHEAST Corner of Section 15, Township 102N, Range 40W, 5 P.M.

STATE OF MINNESOTA, County of NOBLES

At the corner location shown on the sketch:

- On May 1, 1978 found a 5/8" Iron Pin Down 0.3', Wood Stakes Down 15",
DATE
Stone Down 18", Pin Over Center of Flat Stone.
 - left monument as found, lowered monument, removed monument (explain)
- On _____ placed a _____
DATE



Statement of evidence relative to this corner location is on back of page.

I hereby certify that this document and the data contained herein was prepared by me or under my direct supervision.

E. Eldon Lober Sept. 13, 1978
SIGNATURE DATE

Registration No. 11933

- Land Surveyor, Professional Engineer
- County Surveyor, County Engineer

OFFICE OF THE COUNTY RECORDER

County of Nobles

I hereby certify that this document was filed in the Co. Recorders office at 11:00 A.M. on the 15th day of September A.D., 1978

County Recorder Joyce Bemke

By: _____, Deputy

DOCUMENT NO. 203808

Statement of Evidence:

N.E. Cor. Sec. 15 T102N R40W Nobles

September 25, 1868 - George G. Howe - The original Public Land Surveyor's notes read: "Set post in mound with pits for corner to Sections 10, 11, 14 & 15".

April 30, 1894 - Milton S. Smith - County Surveyor, did a survey in Section 10 and "Found original stake-set stone" at the S.E. Cor. Section 10.

1894 - Nobles County Highway Department's note for S.W. Corner Section 11 read: "Stone in 1894 set".

November 8, 1902 - M. S. Smith, County Surveyor, did a survey in Section 14 and certifies a "Stone" at the N.W. corner.

1903 - Nobles County Highway Department's note for S.W. corner Section 11 read: "Stone in 1903".

1940 - Nobles County Highway Department's note for S.W. corner Section 11 read: "Stone in 1940".

1959 - Nobles County Highway Department's note for S.W. corner Section 11 read: "Stake in 1959 placed Iron Pin".

April 13, 1960 - E. Polesky - Minnesota Highway Department's Survey crew for S.P. 5380 - T.H. I-90 - "Found 1 x 2 down 2.5' ". Placed 5/8 inch iron pin over - down 0.3 feet.

February 22, 1978 - Foster, Stoeckman and Verdoorn of the Minnesota Department of Transportation used notes from Location Survey S.P. 5380-01. Found 5/8 inch iron pin down 0.3 feet.

March 28, 1978 - David Raley of the Minnesota Department of Transportation contacted the following people in the area of this land corner: James Kramer - age 60± and Bob Hansen - age 60±. Bob Hansen advised that there should be an iron stake and rock at this location. Other than this information, neither knew of any surveys, property disputes, or anything else about this land corner. Mr. Hansen has lived in the area all his life, and Mr. Kramer has lived here 12 years.

An analysis of the Statement of Evidence and the field measurements indicate that the in-place location of the iron pin, wood stake, and stone provides a continuous chain of perpetuation of the original Public Land Survey corner.

For additional information, including field measurements and photographs, contact the Minnesota Department of Transportation in Windom.