

# CERTIFICATE OF LOCATION OF GOVERNMENT CORNER

NORTHEAST Corner of Section 18, Township 102 N, Range 40 W, 5 th. P.M.

STATE OF MINNESOTA, County of NOBLES

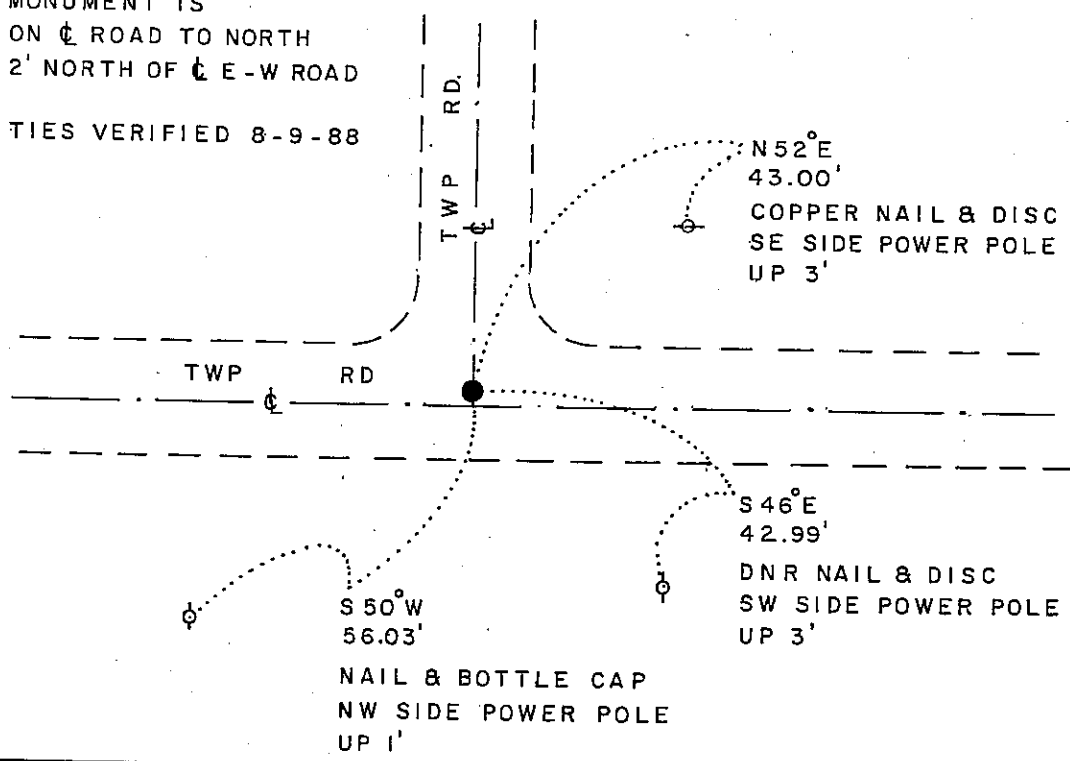
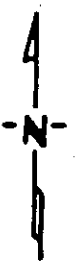
At the corner location shown on the sketch:

- On 6-26-84 found a 2" x 2" x 12" WOOD STAKE, DOWN 14", OVER A 9" x 10" x 14" STONE, DOWN 26"
  - left monument as found,  lowered monument,  removed monument (explain)
- On 6-26-84 placed a 1 1/4" x 1 1/4" x 16" PERFORATED STEEL TUBE WITH ALUMINUM CAP STAMPED "DNR SURVEY MARKER", OVER STONE, DOWN 0.4'

### SKETCH OF REFERENCE TIES

NOTE:

MONUMENT IS  
ON  $\perp$  ROAD TO NORTH  
2' NORTH OF  $\perp$  E-W ROAD  
TIES VERIFIED 8-9-88



MINNESOTA STATE  
PLANE COORDINATES  
SOUTH ZONE  
X = 1,557,010.29  
Y = 239,840.74

BEARINGS OBSERVED WITH COMPASS

Statement of evidence relative to this corner location is on back of page

J.B.M. 8-29-88  
8-965

I hereby certify that this document and the data contained herein was prepared by me or under my direct supervision

Lowell R. Pomeroy 9-20-88  
SIGNATURE DATE

Registration No. 17005  
 Land Surveyor,  Professional Engineer  
 County Surveyor,  County Engineer

OFFICE OF THE COUNTY RECORDER  
County of Nobles

I hereby certify that this document was filed in the Co. Recorders Office at 4:15 P. M. on the 21st day of September A.D., 1988

County Recorder Jorge Howard  
By \_\_\_\_\_, Deputy  
DOCUMENT NO. 234939

Northeast Corner Section 18, Township 102 North, Range 40 West

The DNR Bureau of Engineering contacted the following offices for survey information on this corner:

MN Secretary of State  
 Nobles County Recorder and Highway Engineer  
 Mn/DOT at Windom  
 Martin Land Surveying at Worthington  
 Rieke-Carroll-Muller

- 1868 The U.S. General Land Office notes in the Secretary of State's Office show the corner is a post, set in a mound with pits.
- 1901 Surveyor's Record Book A-2, on page 454, obtained from the County Recorder's Office, contains a survey by Milton S. Smith, County Surveyor. Survey shows a blue stone at this corner, which measures:  
 42 ft. from a fence post, fences north and west  
 2680.5 ft. from the east quarter corner Section 17  
 2645.3 ft. from the east quarter corner Section 7
- 1935 A Surveyor's certificate of public highway corners, obtained from the County Highway Engineer, shows this corner was evidenced by a stone monument. Placed a 2" by 2" hub on top of stone, top of hub at surface of ground. Two reference ties are shown.
- 1959 A Field Book of ties and monuments of government corners, obtained from the County Highway Engineer, shows a stake at this corner. Placed an iron pin and took four reference ties.
- 1961 March, Mn/DOT found a rock at this corner down 2.5 ft.
- 1965 June, the DNR Bureau of Engineering traversed to the area of the corner and found a spike at the intersection of crossroads. Four reference ties are shown to the corner.
- 1978 February, Mn/DOT found a 16d nail down 0.8 ft. and took two reference ties.
- 1984 June 26, the DNR Bureau of Engineering hired a backhoe (Suby Backhoe of Worthington) to dig for evidence of this corner. Found a 2" by 2" by 12" wood stake down 14" over a 9" by 10" by 14" stone, down 22", at natural ground. Left stone as found and set a 1" square by 4" and 1" square by 5" channel pipe and wood hub on its south side. Stone is:  
 on center line road north, 2' north of center line east-west road  
 2678.92 ft. from the north quarter corner Section 17  
 2646.14 ft. from the east quarter corner Section 7
- Analysis of the available information led the DNR Bureau of Engineering to conclude that the found stone marks the location of the corner.
- 1988 August, the DNR Bureau of Engineering revisited the corner and found the DNR Survey Marker, as previously set, in good condition.