

CERTIFICATE OF LOCATION OF GOVERNMENT CORNER

NORTHEAST Corner of Section 18, Township 102N, Range 40W, 5TH P.M.

STATE OF MINNESOTA, County of NOBLES

At the corner location shown on the sketch :

On 3 OCTOBER 2000 found ALUMINUM CAP STAMPED DNR SURVEY MARKER

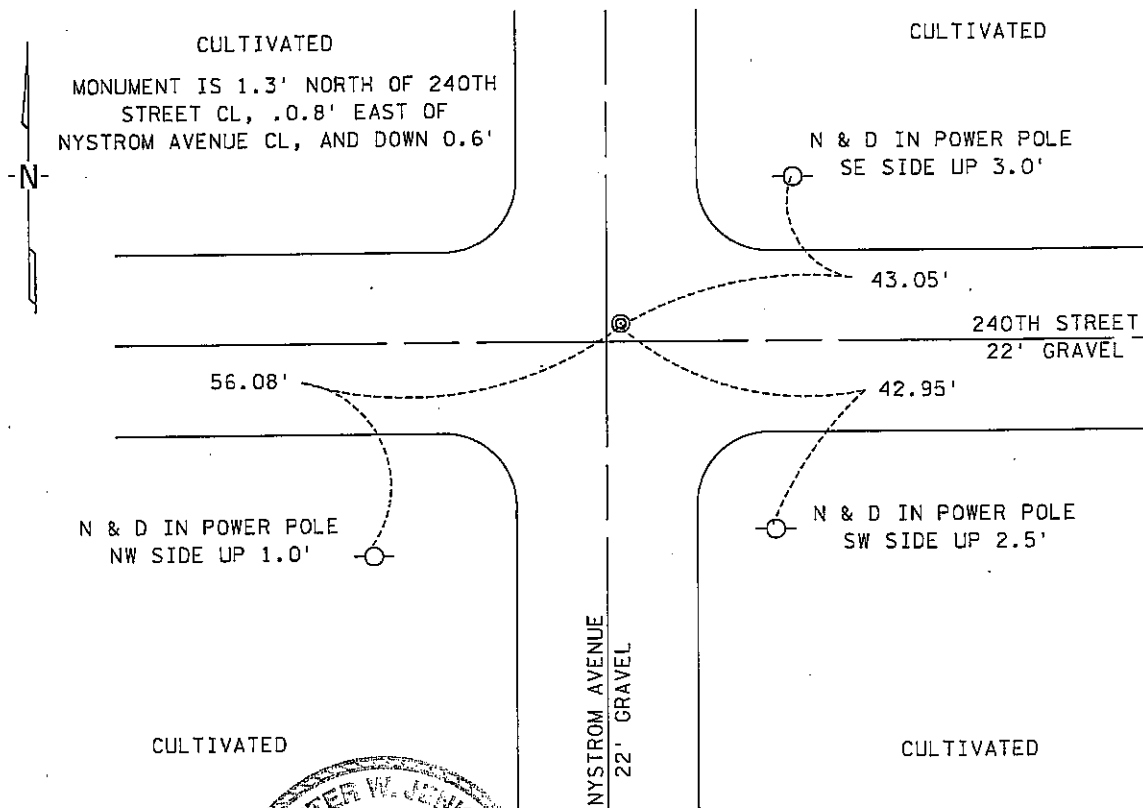
left monument as found,  lowered monument,  removed monument (explain)

On \_\_\_\_\_ set \_\_\_\_\_

SEC 7-102N-40W

Sketch of reference ties

SEC 8-102N-40W



SEC 18-102N-40W

SEC 17-102N-40W

Statement of evidence relative to this corner location is on back page

I hereby certify that this document and the data contained herein was prepared by me or under my direct supervision.

*[Signature]* 4 Dec 00  
Signature Date

Registration No. 22683

Land Surveyor,  Professional Engineer

County Surveyor,  County Engineer

OFFICE OF THE COUNTY RECORDER

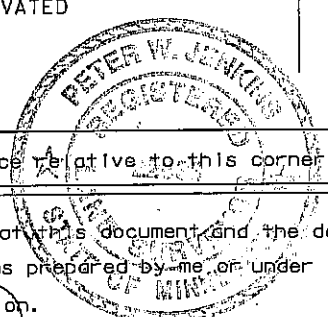
County of Nobles

I hereby certify that this document was filed in the Co. Recorders office at 8:55 A.M. on the 19th day of December, 2000 A.D.

County Recorder *[Signature]*, Deputy

DOCUMENT NO. 281820

TRACKED, COMPARED, PHOTO, FEE 70



Statement of Evidence:

NORTHEAST CORNER  
SECTION 18, TOWNSHIP 102 NORTH, RANGE 40 WEST  
5th PRINCIPAL MERIDIAN, MINNESOTA

- 25 Sept. 1868 -R.H.L. Jewett & George G. Howe, U.S. Deputy Surveyors, "North bet. Sec's. 17 & 18" @ 80.00 chs. "Set post in mound with pits for Cor. to Secs. 7, 8, 17 & 18." No ties.
- 29 May 1901 -Nobles County Recorder's Office, Surveyor's Record, Volume A-2, Page 454, by Milton S. Smith, County Surveyor, for a survey in Sec. 8-102-40, shows a blue stone for the Southwest Corner and measures 2680.5 feet east to the South Quarter Corner.
- Circa 1935 -Nobles County Highway Department, Section Corner Ties for Worthington Twp., shows a stone for the Southwest Corner of Sec. 8-102-40 and that a wood stake was placed.
- Circa 1959 -Nobles County Highway Department, Section Corner Ties for Worthington Twp., shows a stone for the Southwest Corner of Sec. 8-102-40 and that a iron pin was placed with ties: PP 48.60' NW; PP 42.82' NE; CFP 45.56' SE; Fence Post 35.05' SW.
- 16 Mar. 1961 -Minnesota Highway Department, Land Tie Field Notes for I-90, SP 5380, states that a rock was found, down 2.5' for the Northeast Corner of Sec. 18-102-40.
- Circa 1965 -Minnesota DNR, found a spike at the intersection of east-west road and road to north.
- 16 Feb. 1978 -Minnesota Highway Department, Land Tie Field Notes for I-90, SP 5380-01, find a 16d nail, down 0.8' near the center lines of gravel township roads east-west and to the north and found BC's in PP's NE and SW.
- 26 June 1984 -Nobles County Recorder's Office, Certificate of Location of Gov't Corner, by Lowell R. Pommerening, RLS # 17005, states that the DNR hired a backhoe to dig for the Northeast Corner of Sec. 18-102-40 and found a 2" X 2" X 12" wood stake, down 14" over a 9" X 10" X 14" stone, down 22" at natural ground. Left stone and set a 1" X 4" square and 1" X 5" channel pipe and wood hub on the south side of stone. The stone is on centerline of north-south road and 2' north of centerline of east-west road with distances measured of 2678.92' east to the North Quarter Corner of Sec. 17-102-40 and 2646.14' north to the East Quarter Corner of Sec. 7-102-40. DNR revisited site and found monument intact in 1988.
- 9 Apr. 1987 -Nobles County Recorder's Office, Document No. 230010, a Resolution by the Town Board of Worthington Township, declaring 66 foot wide easements for roads where the centerline of said easements incorporate the section lines and corners.
- 3 Oct. 2000 -MnDOT survey crew found a DNR aluminum cap stamped "DNR SURVEY MARKER", down 0.6' near the intersection of gravel roads east-west and road to the north, also agreed with the ties per 1984 Certificate.

The evidence is not conclusive as to the true corner location, however the written, occupational and collateral evidence suggest that this is a reasonable location as to the corner. Additional information regarding the preparation of this certificate can be obtained by contacting: Survey Section, Minnesota Department of Transportation, 501 South Victory Drive, P.O. Box 4039, Mankato, MN 56002-4039.