

CERTIFICATE OF LOCATION OF GOVERNMENT CORNER

NORTHEAST Corner of Section 19, Township 102N, Range 40W, 5TH P.M.

STATE OF MINNESOTA, County of NOBLES

At the corner location shown on the sketch :

On 3 OCTOBER 2000 found 5/8" IRON PIN

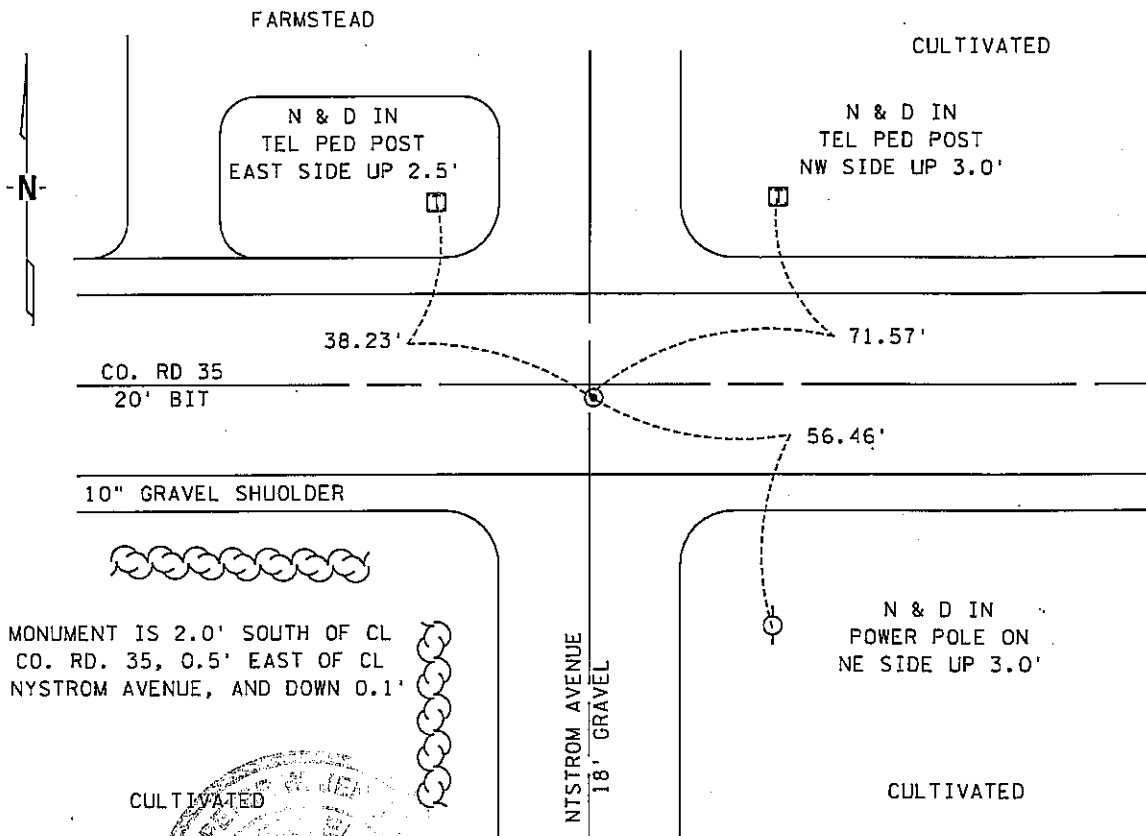
left monument as found, lowered monument, removed monument (explain)

On _____ set _____

SEC 18-102N-40W

Sketch of reference ties

SEC 17-102N-40W



SEC 19-102N-40W

SEC 20-102N-40W

Statement of evidence relative to this corner location is on back page

I hereby certify that this document and the data contained herein was prepared by me or under my direct supervision.

Signature: *[Handwritten Signature]* Date: *6 Dec 00*

Registration No. 22683

- Land Surveyor, Professional Engineer
- County Surveyor, County Engineer

OFFICE OF THE COUNTY RECORDER

County of *Nobles*

I hereby certify that this document was filed in the Co. Recorders office at *9:00 A.M.* on the *19th* day of *December*, *2000* A.D.,

County Recorder *[Handwritten Signature]*, Deputy

DOCUMENT NO. **281821**

TRACKED & COMPARED
PHOTO *[Handwritten]*
FEE *7.00*

Statement of Evidence:

NORTHEAST CORNER
SECTION 19, TOWNSHIP 102 NORTH, RANGE 40 WEST
5th PRINCIPAL MERIDIAN, MINNESOTA

- 25 Sept. 1868 -R.H.L. Jewett & George G. Howe, U.S. Deputy Surveyors, "North bet. Sec's. 19 & 20" @ 80.00 chs. "Set post in mound with pits for Cor. to Secs. 17, 18, 19 & 20." No ties.
- 13 Apr. 1901 -Nobles County Recorder's Office, Surveyor's Record, Volume A-1, Page 87, by Milton S. Smith, County Surveyor, for a survey of Sec. 19-102-40, shows a "X" at the Northeast Corner but does not say what it is.
- July 1917 -Nobles County Recorder's Office, Surveyor's Record, Volume B, Page 98, by Milton S. Smith, County Surveyor, for a survey in Sec. 20-102-40, shows a stone for the Northwest Corner and measures 2619.5 feet east to the North Quarter Corner with a tie to a Cottonwood 33' south and 33' west.
- Circa 1917 -Nobles County Highway Department, Section Corner Book for Worthington Twp., shows a stone for the Southwest Corner of Sec. 17-102-40.
- Circa 1960 -Nobles County Highway Department, Section Corner Book for Worthington Twp., shows a "X" in Conc. for the Southwest Corner of Sec. 17-102-40 with ties: Fence Post 53.11' SW; PP 56.12' SE; TP 73.04' NE; TP 63.25' NW.
- 9 Apr. 1987 -Nobles County Recorder's Office, Document No. 230010, a Resolution by the Town Board of Worthington Township, declaring 66 foot wide easements for roads where the centerline of said easements incorporate the section lines and corners.
- 3 Oct. 2000 -MnDOT survey crew found a 5/8" iron pin, down 0.1' and 2.0' south of centerline of County Road 35 and 0.5' east of centerline of Nystrom Avenue.

The evidence is not conclusive as to the true corner location, however the written, occupational and collateral evidence suggest that this is a reasonable location as to the corner. Additional information regarding the preparation of this certificate can be obtained by contacting: Survey Section, Minnesota Department of Transportation, 501 South Victory Drive, P.O. Box 4039, Mankato, MN 56002-4039.