

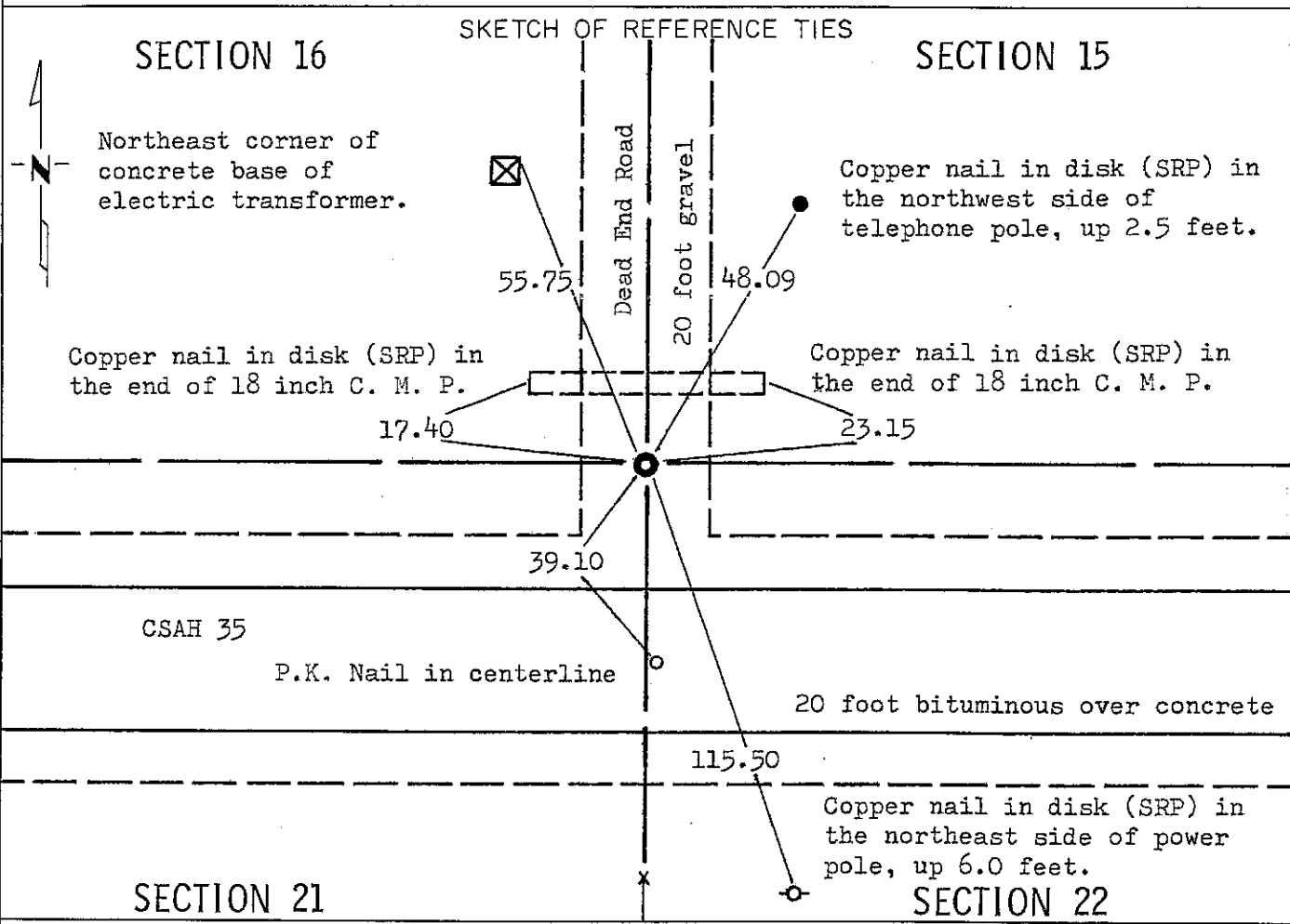
CERTIFICATE OF LOCATION OF GOVERNMENT CORNER

NORTHEAST Corner of Section 21, Township 102N, Range 40W, 5 P.M.

STATE OF MINNESOTA, County of NOBLES

At the corner location shown on the sketch:

- On May 2, 1978 found a 16 inch by 8 inch by 7 inch stone with 'x', down 5.3 feet. ^{DATE} The stone is on centerline of the road to north and fenceline to south.
 - left monument as found, lowered monument, removed monument (explain)
- On May 2, 1978 placed a 20 inch M. H. D. cast iron monument, down 0.3 feet, ^{DATE} over the "X" in stone.



Statement of evidence relative to this corner location is on back of page.

I hereby certify that this document and the data contained herein was prepared by me or under my direct supervision.

S. Elton Lober Sept 13, 1978
SIGNATURE DATE

Registration No. 11933
 Land Surveyor, Professional Engineer
 County Surveyor, County Engineer

OFFICE OF THE COUNTY RECORDER
County of Nobles

I hereby certify that this document was filed in the Co. Recorders office at 11:20 A .M. on the 15th day of September A.D., 1978

County Recorder Jayne Lemke
By _____, Deputy
DOCUMENT NO. 203812

mpared [Signature]

Statement of Evidence:

N.E. Cor. Sec. 21 T102N R40W Nobles

September 23, 1868 - George G. Howe, the original public land surveyor's notes read: "Set post in mound with pits for corner to Sections 21, 22, 15 & 16".

July 14, 1889 - Milton S. Smith - At the request of Chaffer & Dobbuer, the county surveyor did a survey in Section 21 and the record thereof shows there is stone monument in place.

April 30, 1892 - Milton S. Smith - County Surveyor of Nobles County did survey in Section 16 and he certified: "S.E. Sec. Cor. is a large stone with +".

1892 - Notes from Nobles County Highway Department read: "Stone in 1892".

Unknown - Circa 1947 - Minnesota Highway Department's old plans show corner on centerline of original 18 feet wide concrete pavement. New pavement (Circa 1947) appears about 35 or 40 feet farther south.

Unknown - Circa 1959 - Minnesota Highway Department's Survey Party - "assumed from data on T.H. 16 R/W print, placed spike".

March 28, 1978 - David Raley of the Minnesota Department of Transportation contacted Bennie Gerdes, who has lived and farmed in the area since 1959. He knew of no surveys, property disputes, nor anything else about this land corner. Also contacted was Mrs. Henry Schuster, who had no information about this land corner.

An analysis of the Statement of Evidence and the field measurements indicate that the in place location of the stone with "x" provides a continuous chain of perpetuation of the original Public Land Survey corner.

For additional information, including field measurements and photographs, contact the Minnesota Department of Transportation in Windom.