

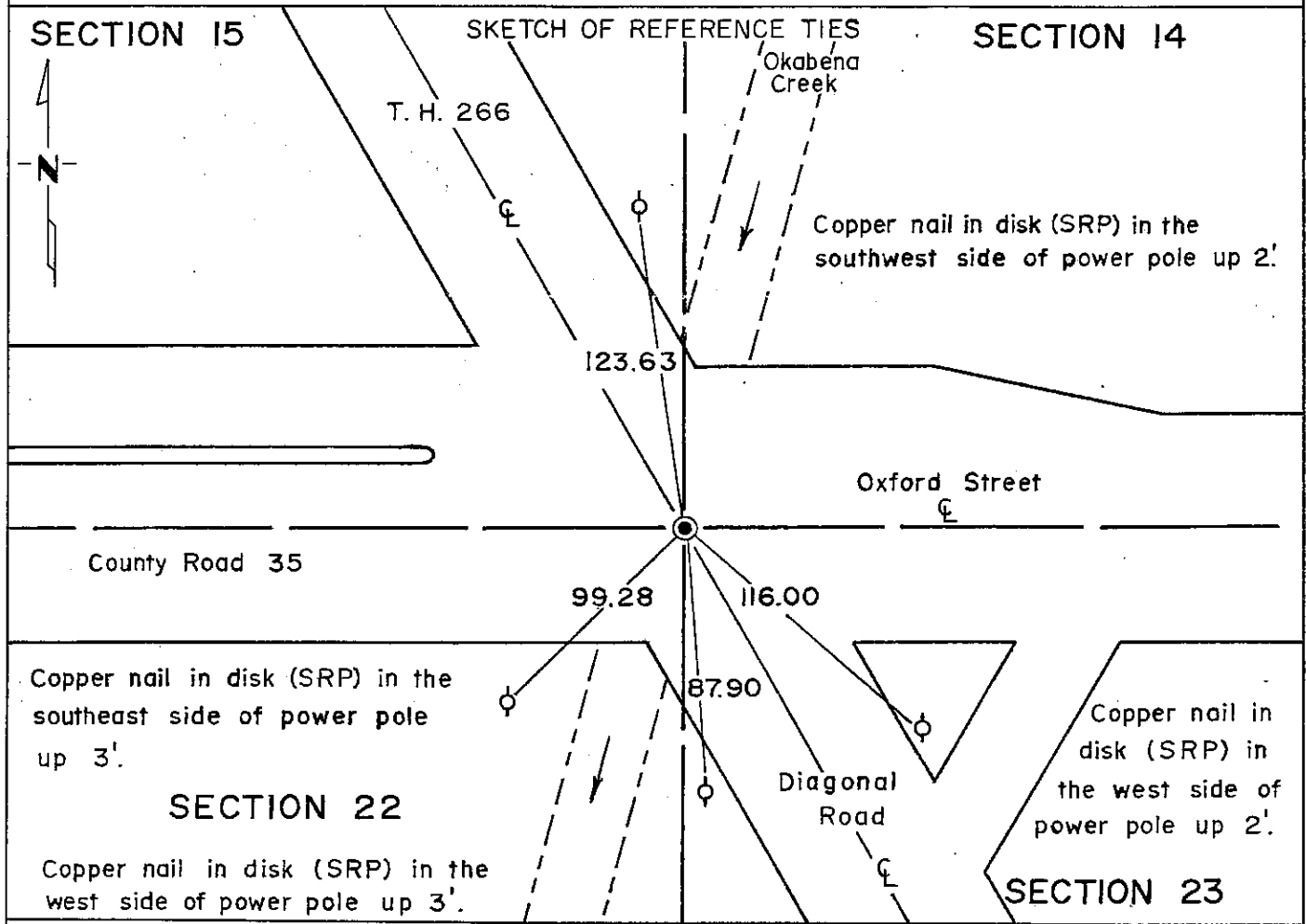
CERTIFICATE OF LOCATION OF GOVERNMENT CORNER

NORTHEAST Corner of Section 22, Township 102 N., Range 40 W., 5 P.M.

STATE OF MINNESOTA, County of NOBLES

At the corner location shown on the sketch:

- On Oct 31, 1975 found a aluminum cap down 2"
DATE
- left monument as found, lowered monument, removed monument (explain)
- On Oct 31, 1975 placed a P.K. nail flush and over cap.
DATE



Statement of evidence relative to this corner location is on back of page.

I hereby certify that this document and the data contained herein was prepared by me or under my direct supervision.

S. Eldon Tober SIGNATURE Sept. 13, 1978 DATE

Registration No. 11933

Land Surveyor, Professional Engineer

County Surveyor, County Engineer

OFFICE OF THE REGISTER OF DEEDS
County of Nobles

I hereby certify that this document was filed in the Reg. of Deeds office at 11:25 A.M. on the 15th day of September A.D., 1978

Register of Deeds Joyce Lemke

By _____, Deputy

DOCUMENT NO. 203813

Photo Yes

Statement of Evidence:

N.E. Cor. Sec. 22 T102N R40W Nobles

September 25, 1868 - George G. Howe - The original Public Land Surveyor, states in his notes that he "Set post in mound with pits for corner to Sections 14, 15, 22, and 23".

March 19, 1913 - William A. Saxon, County Surveyor, writes: "Cor. under center of bridge over Whiskey Ditch".

Unknown - (Circa 1938) - Minnesota Highway Department's land tie notes S.P. 5302 and 5306 read: "Section Corner assumed at Station 0+00 P.O.S.T. under concrete slab".

Unknown - 1947 - Minnesota Highway Department's plan sheets S.P. 5302-16 states: "Aluminum cap set in pavement".

May, 1957 - M. A. Sater, Minnesota Highway Department's survey S.P. 5311-01 "Aluminum plug in pavement T.H. 16".

April 13, 1960 - E. O. Polesky - Minnesota Highway Department's survey crew for S.P. 5380 - "Std. disc 0.3 So. of centerline T.H. 16".

1965 - Notes from Nobles County Highway Department read: "Steel plug in 1965".

Unknown - October 31, 1975 - Minnesota Department of Transportation's survey crew found an aluminum cap down 2 inches and placed a nail flush. This is near the center of Diagonal Road and Oxford Street intersection.

February 23, 1978 - Foster, Verdoorn and Stoeckman of the Minnesota Department of Transportation used notes from Location Survey S.P. 5380-01. Did not find any ties from S.P. 5380-01. Did find an aluminum disc in 2 inch hole near centerline of T.H. 266/Diagonal Road.

March 28, 1978 - David Raley of the Minnesota Department of Transportation contacted Don Johnson about this land corner. He advised that ROM of Worthington did all of his survey work for Homewood Hills. This monument was used for the survey.

The in-place location of the aluminum cap is compatible with the occupation lines within the section. An analysis of the Statement of Evidence and the field measurements indicate that the aluminum cap is in a reasonable location. I therefore accept the monument as the location of the land corner.

For additional information, including field measurements and photographs, contact the Minnesota Department of Transportation in Windom.