

CERTIFICATE OF LOCATION OF GOVERNMENT CORNER

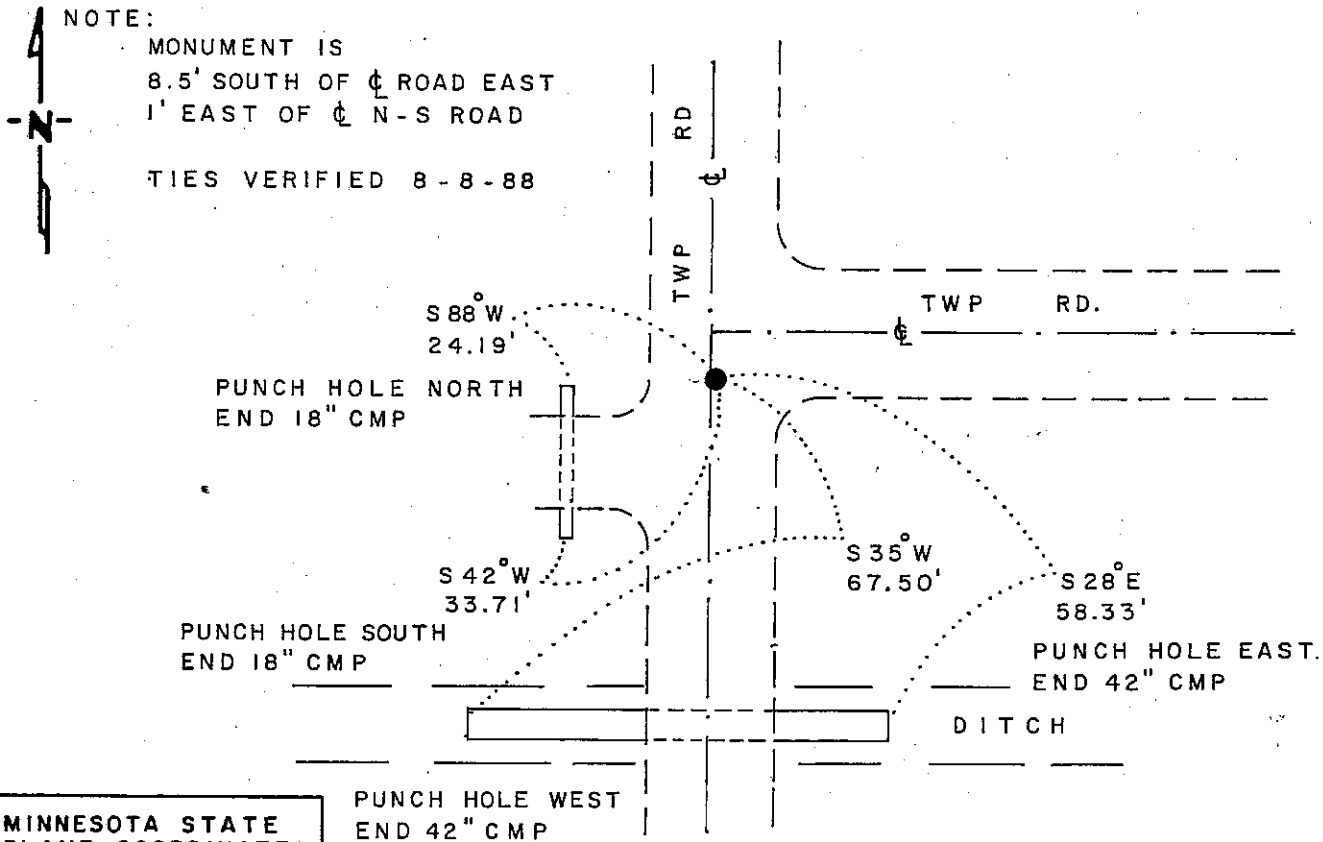
NORTHEAST Corner of Section 7, Township 102N, Range 40 W, 5th P.M.

STATE OF MINNESOTA, County of NOBLES

At the corner location shown on the sketch:

- On 6-26-84 found a 6" x 10" x 17" STONE, WITH DETERIORATED
DATE
WOOD HUB ON NORTH SIDE, DOWN 24"
 - left monument as found, lowered monument, removed monument (explain)
- On 6-26-84 placed a 1 1/4" x 1 1/4" x 20" PERFORATED STEEL TUBE WITH
DATE
ALUMINUM CAP STAMPED "DNR SURVEY MARKER", OVER STONE, DOWN 0.6'

SKETCH OF REFERENCE TIES



MINNESOTA STATE
 PLANE COORDINATES
 SOUTH ZONE
 X = 1,557,146.93
 Y = 245,127.75

BEARINGS OBSERVED WITH COMPASS

Statement of evidence relative to this corner location is on back of page

J.B.M. 8-26-88
6-965

I hereby certify that this document and the data contained herein was prepared by me or under my direct supervision

Lowell R. Pomeroy 9-20-88
SIGNATURE DATE

Registration No. 17005

- Land Surveyor, Professional Engineer
- County Surveyor, County Engineer

OFFICE OF THE COUNTY RECORDER

County of Nobles

I hereby certify that this document was filed in the Co. Recorders office at 3:30 P.M. on the 21st day of September A.D., 1988

County Recorder James Howard

By _____, Deputy

DOCUMENT NO. 234931

Northeast Corner Section 7, Township 102 North, Range 40 West

The DNR Bureau of Engineering contacted the following offices for survey information on this corner:

MN Secretary of State
Nobles County Recorder and Highway Engineer
Mn/DOT at Windom
Martin Land Surveying at Worthington
Rieke-Carroll-Muller

- 1868 The U.S. General Land Office notes in the Secretary of State's Office show the corner is a post, set in a mound with pits.
- No Date Surveyor's Record Book A-1, on page 58, obtained from the County Recorder's Office, contains a survey, surveyor not indicated. Survey shows a distance of 81.61 chains along the north line of Section 8. No mention of a monument at this corner is made.
- 1897 Surveyor's Record Book A-2, on page 286, obtained from the County Recorder's Office, contains a survey by Milton S. Smith, County Surveyor. Survey shows a stone at this corner. The north line of Section 8 is shown to measure 80.20 chains.
- 1901 Surveyor's Record Book A-2, on page 454, obtained from the County Recorder's Office, contains a survey by Milton S. Smith, County Surveyor. Survey shows a stone at this corner, which measures:
2645.3 ft. from the east quarter corner Section 7
5290.6 ft. from the northeast corner Section 18
- 1965 June, the DNR Bureau of Engineering traversed to the area of the corner and set a railroad spike at the intersection of roads north-south and east. Railroad spike measures:
2643.8 ft. from the north quarter corner Section 7
5260.8 ft. from the northeast corner Section 12
Three reference ties are shown to the corner.
- 1970 January, the DNR Bureau of Engineering traversed to the area of the corner and found it as described in 1965.
- 1980 A worksheet and field notes, obtained from Martin Land Surveying, show the corner as a 1/2" iron pipe on fence line west. Iron pipe is shown to measure:
2654.72 ft. from the north quarter corner Section 8
2639.5 ft. from the east quarter corner Section 7
- 1984 June 26, the DNR Bureau of Engineering hired a backhoe (Suby Backhoe of Worthington) to dig for evidence of this corner. Found a 6" by 10" by 17" stone down 24" at natural ground, with deteriorated wood hub on its north side. Left stone as found and placed a 3/4" by 18" iron rod on its west side. Stone is
8.5 ft. south of center line road east, fence west is gone
1 ft. east of center line north-south road
6.44 ft. south and 0.77 ft. east of a found railroad spike
2.07 ft. north and 2.24 ft. east of a found 3/4" iron pipe
2649.32 ft. from the north quarter corner Section 8
2642.81 ft. from the east quarter corner Section 7

Analysis of the available information led the DNR Bureau of Engineering to conclude that the found stone marks the location of the corner.

- 1988 August, the DNR Bureau of Engineering revisited the corner and found the DNR Survey Marker as previously set in good condition.

Traced & Compared 2/24/88
Photo 1/18/88
Fee 2.00