

CERTIFICATE OF LOCATION OF GOVERNMENT CORNER

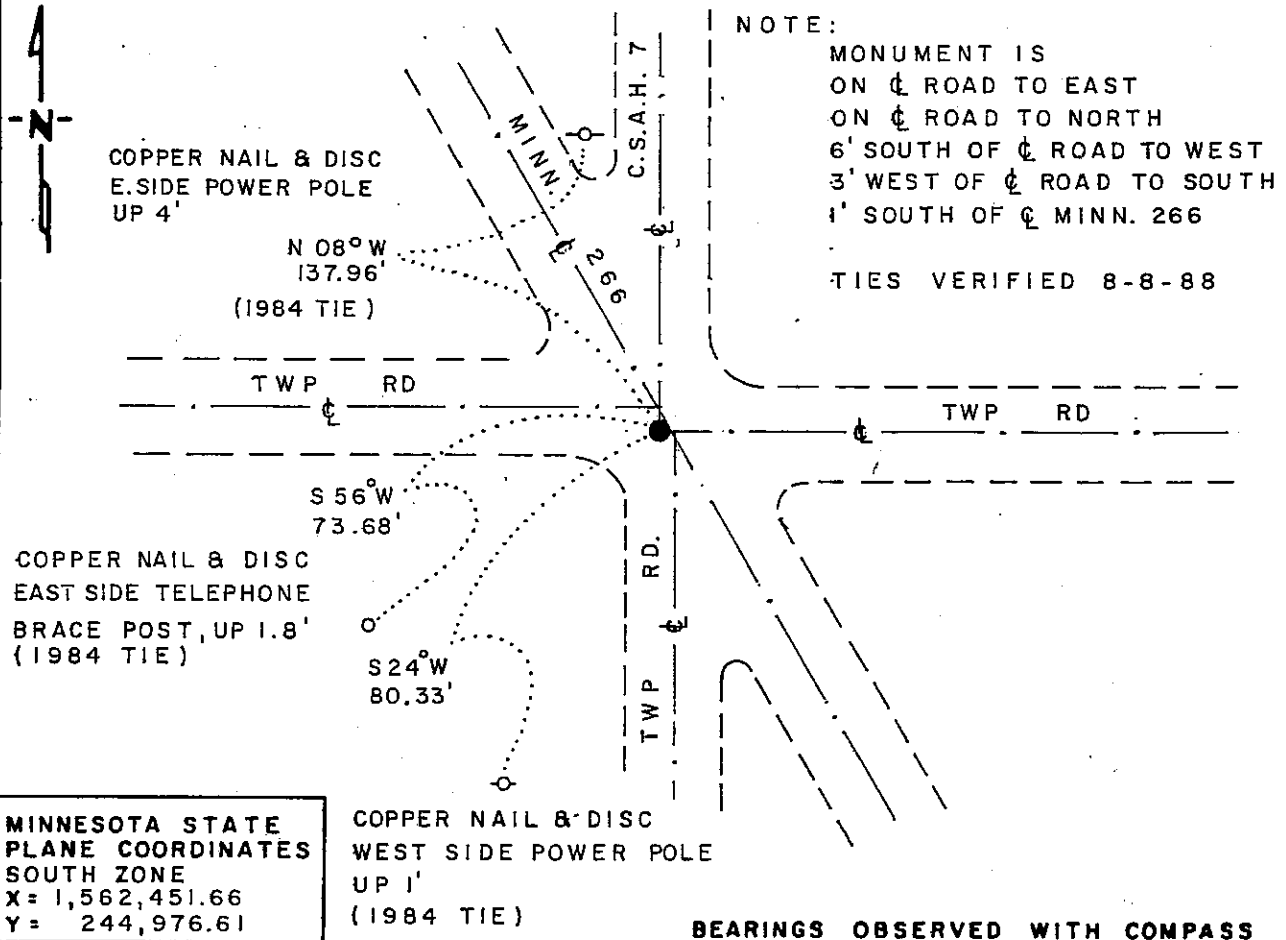
NORTHEAST Corner of Section 8, Township 102 N, Range 40 W, 5 th. P.M.

STATE OF MINNESOTA, County of NOBLES

At the corner location shown on the sketch:

- On 6-25-84 found a 3/4" x 24" IRON ROD, DOWN 0.1'
DATE
- left monument as found, lowered monument, removed monument (explain)
- On _____ placed a _____
DATE

SKETCH OF REFERENCE TIES



Statement of evidence relative to this corner location is on back of page

J.B.M. 8-26-88
6-965

I hereby certify that this document and the data contained herein was prepared by me or under my direct supervision

Lowell R. Pommeroy Jr. 9-20-88
SIGNATURE DATE

Registration No. 17005

- Land Surveyor, Professional Engineer
- County Surveyor, County Engineer

OFFICE OF THE COUNTY RECORDER

County of Nobles
I hereby certify that this document was filed in the Co. Recorders Office at 3:45 P.M. on the 21st day of September A.D., 19 88
County Recorder James Howard

By _____, Deputy

DOCUMENT NO. 234934

Northeast Corner Section 8, Township 102 North, Range 40 West

The DNR Bureau of Engineering contacted the following offices for survey information on this corner:

MN Secretary of State
Nobles County Recorder and Highway Engineer
Mn/DOT at Window
Martin Land Surveying at Worthington
Rieke-Carroll-Muller

1868 The U.S. General Land Office notes in the Secretary of State's Office show the corner is a post, set in a mound with pits.

No Date Surveyor's Record Book A-1, on page 58, obtained from the County Recorder's Office, contains a survey, surveyor not indicated. Survey shows this corner measures:

40.80 chains from the north quarter corner Section 8
81.61 chains from the northeast corner Section 7

No mention of a monument is made.

1897 Surveyor's Record Book A-2, on page 244, obtained from the County Recorder's Office, contains a survey by Milton S. Smith, County Surveyor. Survey shows a stone at this corner in a northwest-southeast diagonal road. This information is also shown on page 286 of this record book. Here the corner is shown to measure:

2658 ft. from the north quarter corner Section 8
1329 ft. from a stone at the sixteenth corner to the west
2669.2 ft. from the east quarter corner Section 5

1901 Surveyor's Record Book A-2, on page 454, obtained from the County Recorder's Office, contains a survey by Milton S. Smith, County Surveyor. Survey shows a stone at this corner.

1913 Surveyor's Record Book B, on page 41, obtained from the County Recorder's Office, contains a survey by William Saxon, County Surveyor. Survey shows a stone at this corner.

1935 A Surveyor's certificate of public highway corners, obtained from the County Highway Engineer, shows that a wood stake was found at this corner. Two reference ties were taken.

No Date The right-of-way map for Minnesota Trunk Highway 266, from Mn/DOT, shows an iron pipe over a 2" by 2" hub in place at this corner. Corner is shown at the intersection of roads north-south and east-west, at a PI of a curve for the highway.

1964 A Field Book of ties and monuments of government corners, obtained from the County Highway Engineer, shows this corner as a brass plug.

1980 February, field notes, worksheet and certificate of survey, obtained from Martin Land Surveying, shows this corner as a 3/4" iron bar in approximate center line of Minnesota Trunk Highway 266. Corner is shown:

2654.72 ft. from the north quarter corner Section 8
2646.34 ft. from the east quarter corner Section 8

1984 June 25, the DNR Bureau of Engineering conducted a search for this corner and found a 3/4" by 24" iron rod down 0.1 of a foot. Iron rod is:

on center line county road north
on center line road east
6 ft. south of center line road west
3 ft. west of center line road south
1 ft. south of center line Minnesota Trunk Highway 266
2658.07 ft. from the north quarter corner Section 8
2646.20 ft. from the east quarter corner Section 8

Analysis of the available information led the DNR Bureau of Engineering to conclude that the found iron rod marks the location of the corner.

1988 August, the DNR Bureau of Engineering revisited the corner and found the iron rod as previously located in good condition.

Tract No. Compared To
Photo P. 2. 2
Fee 71c