

# CERTIFICATE OF LOCATION OF GOVERNMENT CORNER

NORTHEAST Corner of Section 22, Township 102 N, Range 40 W, 5th P.M.  
 STATE OF MINNESOTA, County of NOBLES

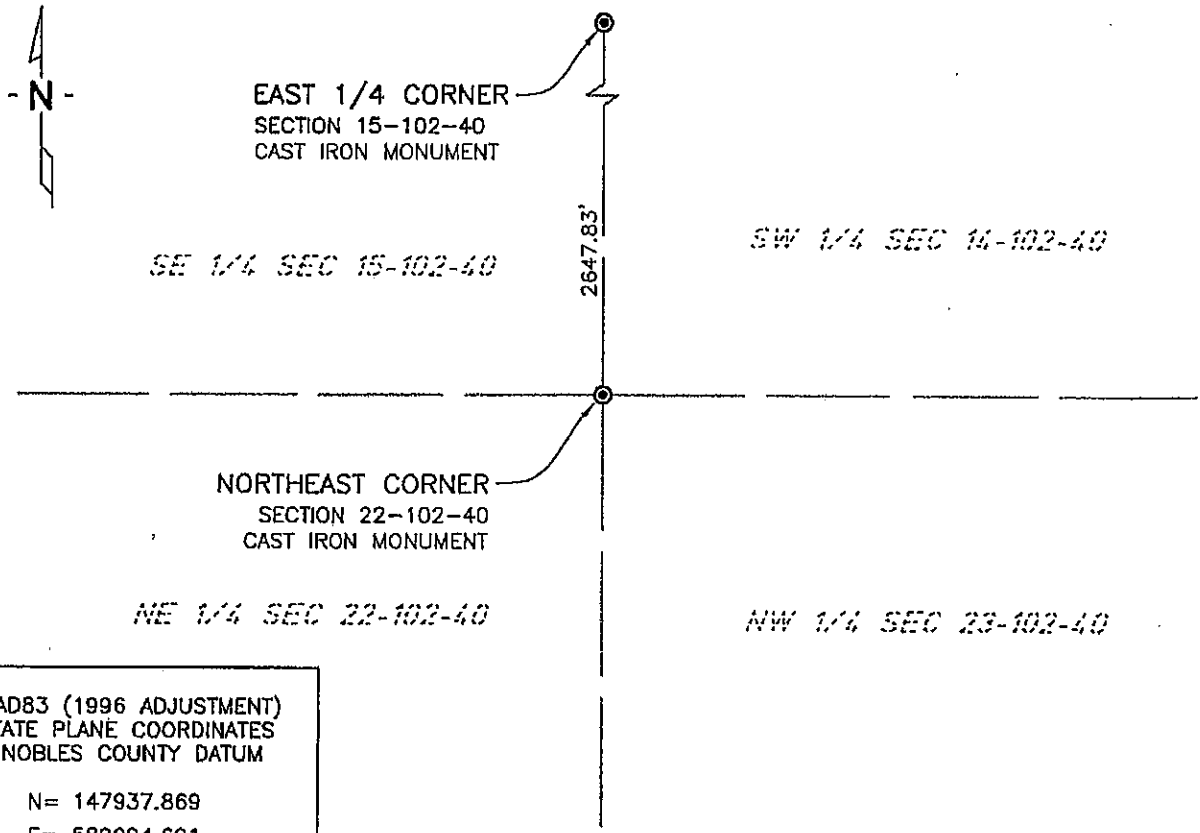
At the corner location shown on the sketch:

- On 7/16/03 found a CAST IRON MONUMENT  
DATE

---

- left monument as found,  lowered monument,  removed monument (explain)
- On \_\_\_\_\_ placed a \_\_\_\_\_  
DATE

### SKETCH OF REFERENCE TIES



NAD83 (1996 ADJUSTMENT)  
 STATE PLANE COORDINATES  
 NOBLES COUNTY DATUM

N= 147937.869  
 E= 589094.691

BOOK: 110 PG. 43  
 I:\NOBLES\CERTIFICATES\2005\CAD\NE22-102-40

Statement of evidence relative to this corner location is on back of page.

I hereby certify that this document and the data contained herein was prepared by me or under my direct supervision.

Janele Fowlds      4-24-06  
JANELE FOWLDS      DATE

Registration No. 26748

Land surveyor,     Professional Engineer  
 County Surveyor,    County Engineer

OFFICE OF THE COUNTY RECORDER  
 County of \_\_\_\_\_

I hereby certify that this document was filed in the Co. Recorders office at \_\_\_\_M. on the \_\_\_\_\_ day of \_\_\_\_\_ A.D., 19\_\_\_\_

County Recorder \_\_\_\_\_  
 By \_\_\_\_\_, Deputy

DOCUMENT NO. \_\_\_\_\_

Statement of Evidence

Northeast Corner Section 22, Township 102 North, Range 40 West

Original Notes

- 1965 Nobles County Highway Department records show a steel plug with the following ties:  
Power Pole – Southwest 96.80  
Light Pole – Southeast 37.64'  
Power Pole – Northeast 38.90'
- 1978 MN/DOT researched the corner and found an aluminum cap. The location of the aluminum cap is compatible with occupation lines, and with some analysis is a reasonable for corner. This evidence was recorded as marking the corner on September 15.
- 1978 A survey, from Martin Land Surveying, Worthington, shows a cast iron monument found.
- 1998 Field notes received, by Madsen Land Surveying Inc., Fairmont, shows a cast iron monument was found on April 30, with the following ties:  
Chiseled "+" in Conc. Bridge Head Wall – Northeast 83.36'  
Northeast Bolt on LP- South 76.05'  
Northeast Bolt on LP – Southwest 75.21'  
CL East bound lane – South 5.5'
- 2003 On July 16, Bolton & Menk, Inc., Mankato, found a cast iron monument at the surface.