

238821

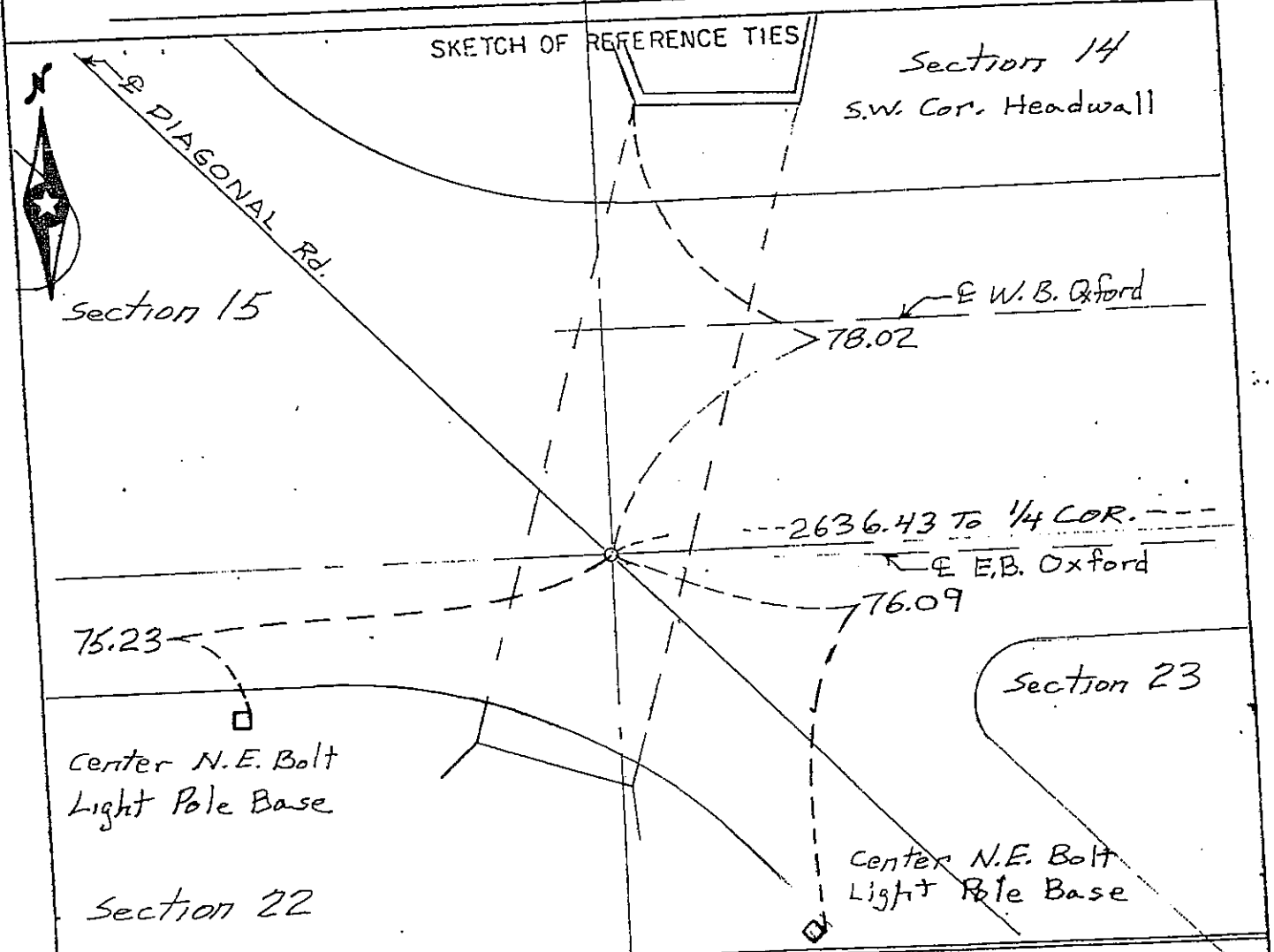
CERTIFICATE OF LOCATION OF GOVERNMENT CORNER

North West Corner of Section 23, Township 102N, Range 40W, 5 P.M.

STATE OF MINNESOTA, County of NOBLES

At the corner location shown on the sketch:

- On _____ found a _____
DATE
- left monument as found, lowered monument, removed monument (explain)
- On 10/11/89 placed a Cast Iron Monument in it's original location
DATE after Street reconstruction.



I hereby certify that this document and the data contained herein was prepared by me or under my direct supervision.

James H. Smith
SIGNATURE

DATE

Registration No. 12003

Land Surveyor, Professional Engineer

County Surveyor, County Engineer

OFFICE OF THE COUNTY RECORDER
County of Nobles

I hereby certify that this document was filed in the Co. Recorders office at 11:45 A.M. on the 13th day of November A.D., 1989

County Recorder James Howard

By _____, Deputy

DOCUMENT NO. 238821

Tract D.A. Compared SW

Photo 1/2

Fee 200