

# CERTIFICATE OF LOCATION OF GOVERNMENT CORNER

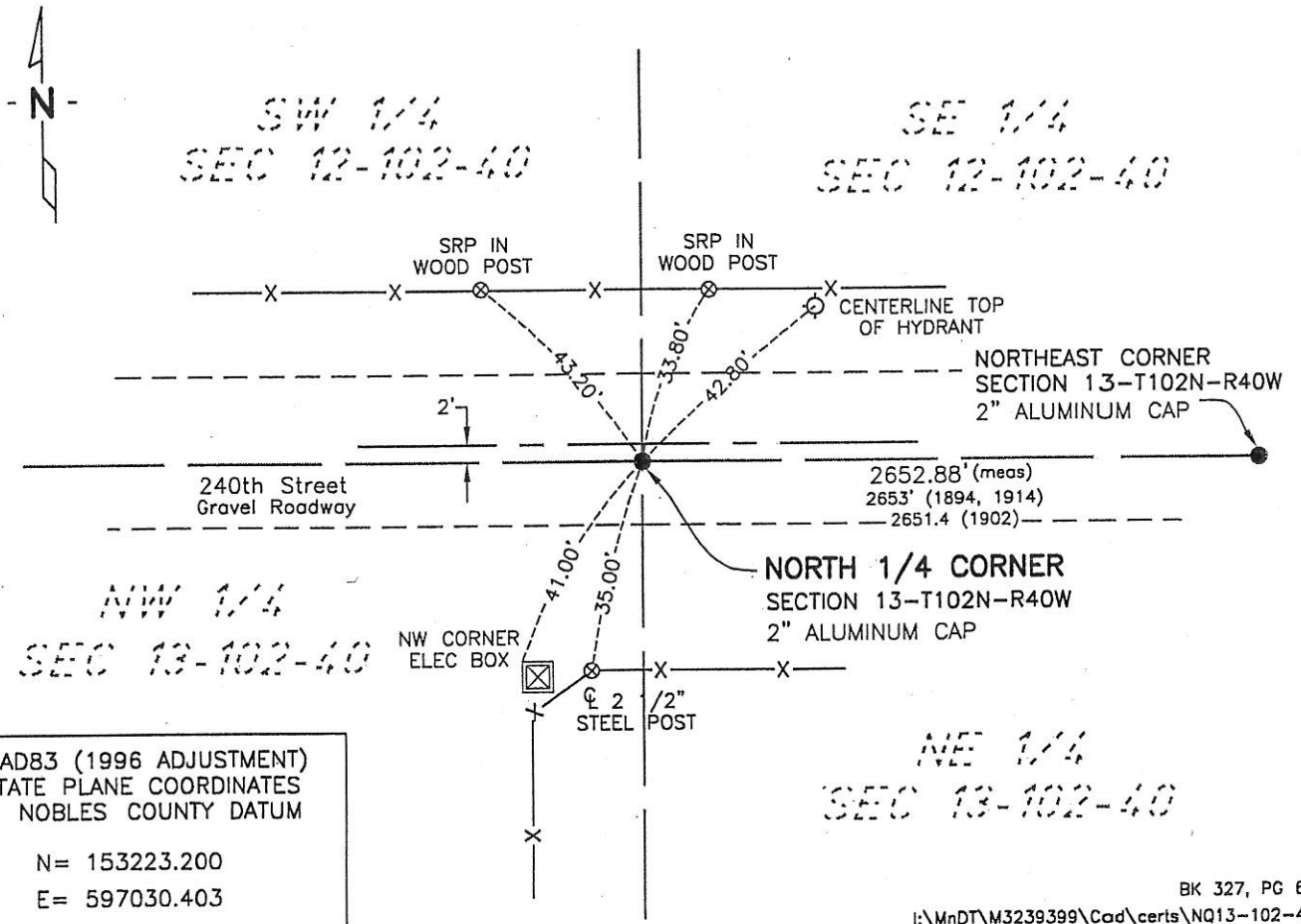
NORTH 1/4 Corner of Section 13, Township 102, Range 40, 5th P.M.

STATE OF MINNESOTA, County of NOBLES

At the corner location shown on the sketch:

- On 4-16-07 found a 2" ALUMINUM CAP (4" DEEP) 2' SOUTH OF CENTERLINE  
DATE
- left monument as found,  lowered monument,  removed monument (explain)
- On \_\_\_\_\_ found \_\_\_\_\_  
DATE

### SKETCH OF REFERENCE TIES



NAD83 (1996 ADJUSTMENT)  
STATE PLANE COORDINATES  
NOBLES COUNTY DATUM

N = 153223.200  
E = 597030.403

BK 327, PG 64  
I:\MnDT\M3239399\Cad\certs\NQ13-102-40

Statement of evidence relative to this corner location is on back of page.

I hereby certify that this document and the data contained herein was prepared by me or under my direct supervision.

*Joseph A. Haefner*  
JOSEPH A. HAEFNER  
6-27-2007  
DATE

Registration No. 43909

Land surveyor,  Professional Engineer  
 County Surveyor,  County Engineer

OFFICE OF THE COUNTY RECORDER  
County of \_\_\_\_\_

I hereby certify that this document was filed in the Co. Recorders office at \_\_\_\_M. on the \_\_\_\_\_ day of \_\_\_\_\_ A.D., 20\_\_\_\_

County Recorder \_\_\_\_\_  
By \_\_\_\_\_, Deputy  
DOCUMENT NO. \_\_\_\_\_

Statement of Evidence

North Quarter Corner Section 13, Township 102 North, Range 40 West

- 1868 -George G. Howe, U.S. Deputy Surveyor, his notes read: "east on a random line between sections 12 & 13, Var 11°30'E" @ 40.00 chs "set temp ¼ post" @ 79.73 chs "intersect Range line 13 lks north of corner to sections 7, 12, 13 & 18" "N 89°54'W between sections 12 & 13, Var 11°30'E" @ 39.86 ½ chs "set post in mound with pits for ¼ section corner" no ties
- 23 May 1894 -Nobles County Recorder's Office, Surveyor's Record A-2, Page 152, by Milton S. Smith, County Surveyor, for a survey of Section 12, shows a set stone at the S ¼ of Section 12 (N ¼ Section 13), distances of east 2653' and west 2653' are shown to the corresponding section corners
- 21 Apr 1902 -Nobles County Recorder's Office, Surveyor's Record A-1, Page 92, by Milton S. Smith, County Surveyor, for a survey of Section 13, shows a stone at the N ¼ corner, a distance of east 2651.4' is shown to the corresponding section corner
- 29 Oct 1914 -Nobles County Recorder's Office, Surveyors Record B, Page 59, by William A. Saxon, County Surveyor, for a survey in Section 13, shows distances of east 2653' and west 2653' to the corresponding section corners.
- 1940 -Nobles County Highway Department records show a stone at this corner and that an iron pin was placed.
- 1959 -Nobles County Highway Department records state an iron pin at this corner.
- 12 May 1980 -Minnesota Department of Transportation, survey crew found a ¾" inch iron pipe flush with surface of gravel road 2 feet south of centerline
- 20 Nov 1995 -Zieske Land Surveying, Inc., Project No. N 9505 S, for a survey in the NW ¼ Section 13, shows a 5/8" iron pipe at the corner
- 29 Apr 1998 -City of Worthington GPS survey, "found ¾" iron pipe - replaced with a 5/8" x 24" iron rod with aluminum cap (4" deep)"
- 2006 -Plat of WORTHINGTON BIO SCIENCE INDUSTRIAL PARK ADDITION, by Zieske Land Surveying, Inc., shows a 5/8" iron pipe at the corner
- 5 June 2007 -Bolton & Menk, Inc., survey crew found the above referenced Aluminum Cap & Iron.
- The written evidence is conclusive and continuous back to the 1894 survey by Smith, the distance measurements between the 1894, 1902, 1914 & 2007 surveys are close considering the time span and the occupational and collateral evidence support this location as a reasonable location as to the corner. Additional information regarding the preparation of this certificate can be obtained by contacting: Bolton & Menk, Inc., 219 North Main Street, Fairmont, MN 5601