

CERTIFICATE OF LOCATION OF GOVERNMENT CORNER

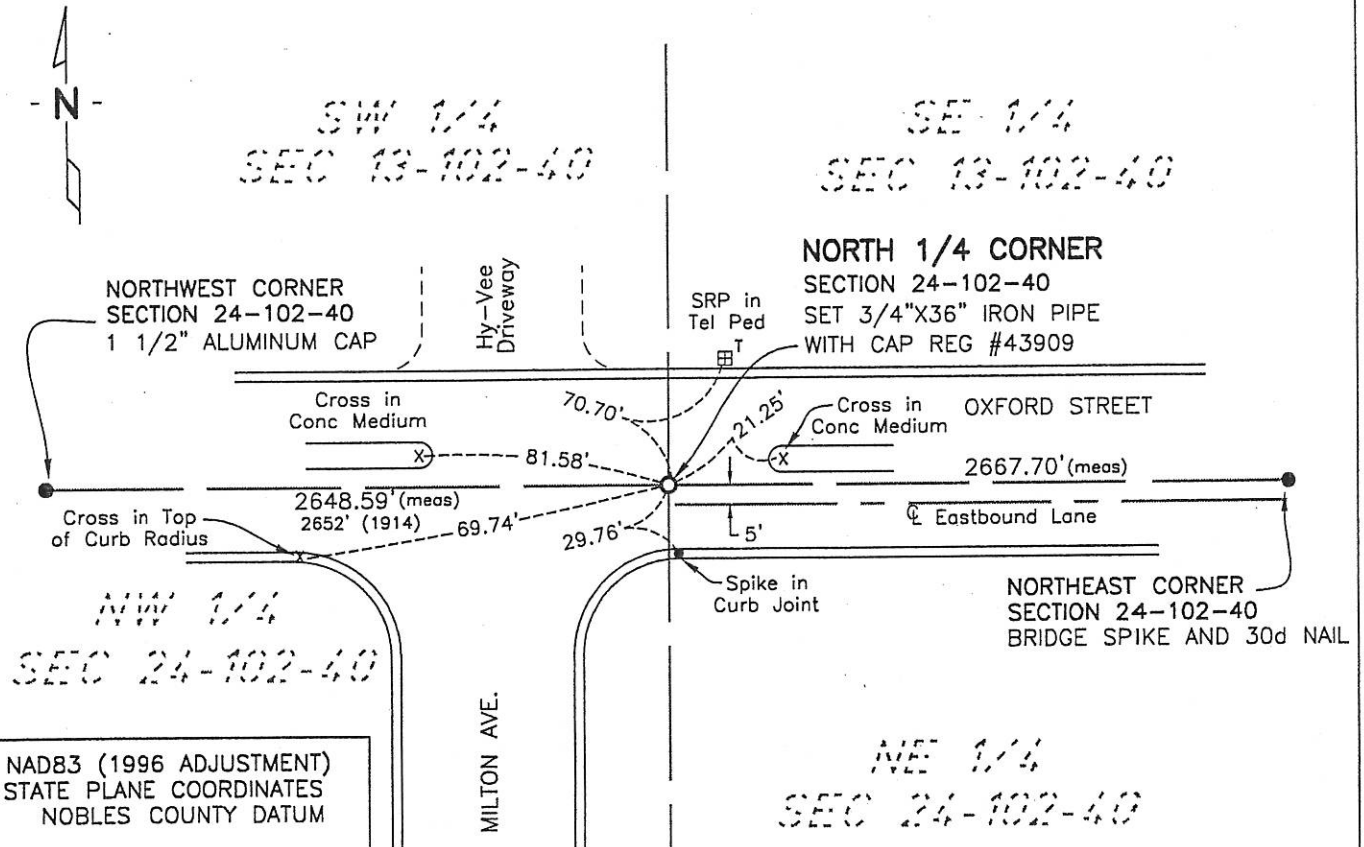
NORTH 1/4 Corner of Section 24, Township 102, Range 40, 5th P.M.

STATE OF MINNESOTA, County of NOBLES

At the corner location shown on the sketch:

- On 6-27-07 found a P.K. NAIL 5' NORTH OF THE CENTERLINE OF THE
DATE
EASTBOUND LANE
 - left monument as found, lowered monument, removed monument (explain)
- On 6-27-07 placed a 3/4" X 36" IRON PIPE WITH REG CAP #43909
DATE
IN PLACE OF P.K. NAIL

SKETCH OF REFERENCE TIES



NAD83 (1996 ADJUSTMENT)
STATE PLANE COORDINATES
NOBLES COUNTY DATUM

N= 147974.245
E= 597026.641

BK. 333 PG. 33

I:\MndT\M3239399\Cad\certs\NQ24-102-40

Statement of evidence relative to this corner location is on back of page.

I hereby certify that this document and the data contained herein was prepared by me or under my direct supervision.

Joseph A. Haefner 6-27-07
JOSEPH A. HAEFNER DATE

Registration No. 43909

- Land surveyor, Professional Engineer
- County Surveyor, County Engineer

OFFICE OF THE COUNTY RECORDER

County of _____

I hereby certify that this document was filed in the Co. Recorders office at ____M. on the _____ day of _____ A.D., 20__

County Recorder _____

By _____, Deputy

DOCUMENT NO. _____

North Quarter Corner Section 24, Township 102 North, Range 40 West

- 1868 -George G. Howe, U.S. Deputy Surveyor, his notes read:
- 23 Apr 1892 -Nobles County Recorder's Office, Surveyor's Record A-2, Page 52 & 553, by Milton S. Smith, County Surveyor, for a survey of Section 24, states "1/4 post on north line of section 24 is an oak post set in mound by W. Shepard, a civil Engineer & Surveyor who claims he found original stake in mound & pits"
- 1894 -Nobles County Highway Department records show a stone was set at this corner.
- 29 Oct 1914 -Nobles County Recorder's Office, Surveyors Record B, Page 59, by William A. Saxon, County Surveyor, for a survey in Section 13, shows a distance of west 2652' to the corresponding section corner.
- 1959 -Nobles County Highway Department records show a disk at this corner.
- 18 May 1979 -Minnesota Department of Transportation, survey crew found a 3-inch aluminum cap with an "X" set in concrete pavement and set a concrete nail flush with bituminous surface.
- 13 Sep 1982 -Northland Engineers & Surveying, Inc., File No. 82011, Recorded as Document No. 215480, for a survey of Chicago, Rock Island & Pacific Railroad Monumentation, shows a monument at the corner.
- 8 July 1995 -Madsen Land Surveying Inc., Survey File No. 95110, for a survey in Auditors Lot 9 of Auditor's Plat of Brower Subdivision in Section 24, shows a capped iron rod at this corner.
- 29 April 1998 City of Worthington GPS survey, "found 5/8" iron rod in bituminous road; Set Alum cap over iron rod"
- 7 July 2004 -Madsen Land Surveying Inc., Survey File No. 04082, for a survey in Section 24, states "PK nail in bituminous paving"
- 5 June 2007 -Bolton & Menk, Inc., survey crew found the above referenced P.K. nail and set a 3/4" iron pipe with cap #43909. Distances of west 2649.18' and east 2667.39' was measured to the corresponding section corners.
- There is a lot of written evidence but it is not conclusive as to the true corner location, the measurement data from 1914 & 2007 are somewhat close considering the time span and the occupational and collateral evidence also support that this is a reasonable location as to the corner. Additional information regarding the preparation of this certificate can be obtained by contacting: Bolton & Menk, Inc., 219 North Main Street, Fairmont, MN 5601