

# CERTIFICATE OF LOCATION OF GOVERNMENT CORNER

NORTH 1/4 Corner of Section 25, Township 102, Range 40, 5th P.M.

STATE OF MINNESOTA, County of NOBLES

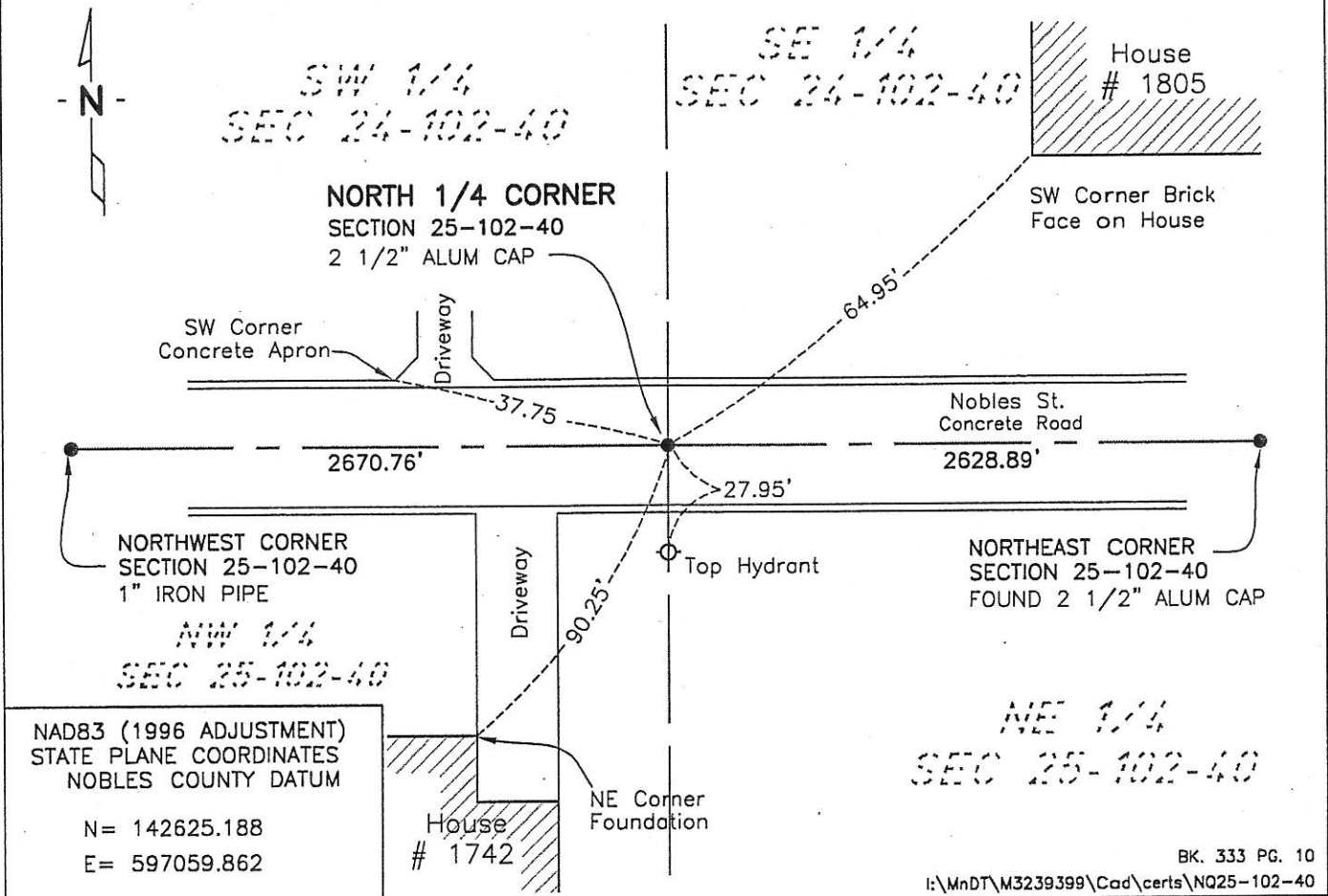
At the corner location shown on the sketch:

On 6-5-07 found a 2 1/2" ALUMINUM CAP AT SURFACE CONCRETE STREET  
DATE

left monument as found,  lowered monument,  removed monument (explain)

On \_\_\_\_\_  
DATE

### SKETCH OF REFERENCE TIES



NAD83 (1996 ADJUSTMENT)  
STATE PLANE COORDINATES  
NOBLES COUNTY DATUM

N = 142625.188  
E = 597059.862

*NE 1/4*  
*SEC 25-102-40*

BK. 333 PG. 10  
i:\MnDT\M3239399\Cad\certs\N025-102-40

Statement of evidence relative to this corner location is on back of page.

I hereby certify that this document and the data contained herein was prepared by me or under my direct supervision.

*Joseph A. Haefner*  
JOSEPH A. HAEFNER  
6-27-07  
DATE

Registration No. 43909

- Land surveyor,  Professional Engineer  
 County Surveyor,  County Engineer

### OFFICE OF THE COUNTY RECORDER

County of \_\_\_\_\_

I hereby certify that this document was filed in the Co. Recorders office at \_\_\_\_\_ M. on the \_\_\_\_\_ day of \_\_\_\_\_ A.D., 20\_\_\_\_

County Recorder \_\_\_\_\_

By \_\_\_\_\_, Deputy

DOCUMENT NO. \_\_\_\_\_

Statement of Evidence

North Quarter Corner Section 25, Township 102 North, Range 40 West

1868 -George G. Howe, U.S. Deputy Surveyor, his notes read: "West on a true line between sections 24 & 25, Var 11°30'E at right angles with Range line" @ 40.00 chs "set post in mound with pits for the quarter section corner.

23 Apr 1892 -Nobles County Recorder's Office, Surveyor's Record, Volume A-2, by Milton S. Smith, County Surveyor, for a survey in Section 24, states, "1/4 post on south line is a stone monument"

23, July 1980 -Minnesota Department of Transportation, survey crew, found a "+" chiseled in concrete pavement 0.2' south of centerline joint on Nobles Street. Ties are shown as follows:

13 Sep 1982 -Northland Engineers & Surveying, Inc., File No. 82011, Recorded as Document No. 215480, for a survey of Chicago, Rock Island & Pacific Railroad Monumentation, states "found monument (chiseled "x" in concrete pavement)"

18 July 1995 -Madsen Land Surveying Inc., Survey File No. 95110, for a survey in Section 24, states "found chiseled "+" in conc. paving drilled hole in "+" & set 5/8" x 3/6" iron rod (surface)"

29 April 1998 -City of Worthington GPS survey, "found aluminum cap on iron rod"

7 July 2004 -Madsen Land Surveying Inc., Survey File No. 04082, for a survey in Section 24, states "5/8" iron monument with an aluminum cap in conc. paving (surface)

5 June 2007 -Bolton & Menk, Inc., survey crew found a 2 1/2" Aluminum Cap at the surface of concrete street.

The written evidence shows a large gap of unrecorded and unavailable information about this corner location between 1892 and 1980, after which the written evidence is conclusive and continuous. There is nothing to tie the 1980 "+" with the 1892 stone, however no other conflicting evidence could be found therefore, the 2 1/2" Aluminum Cap is the best evidence as to the true corner location. Additional information regarding the preparation of this certificate can be obtained by contacting: Bolton & Menk, Inc., 219 North Main Street, Fairmont, MN 56013