

CERTIFICATE OF LOCATION OF GOVERNMENT CORNER

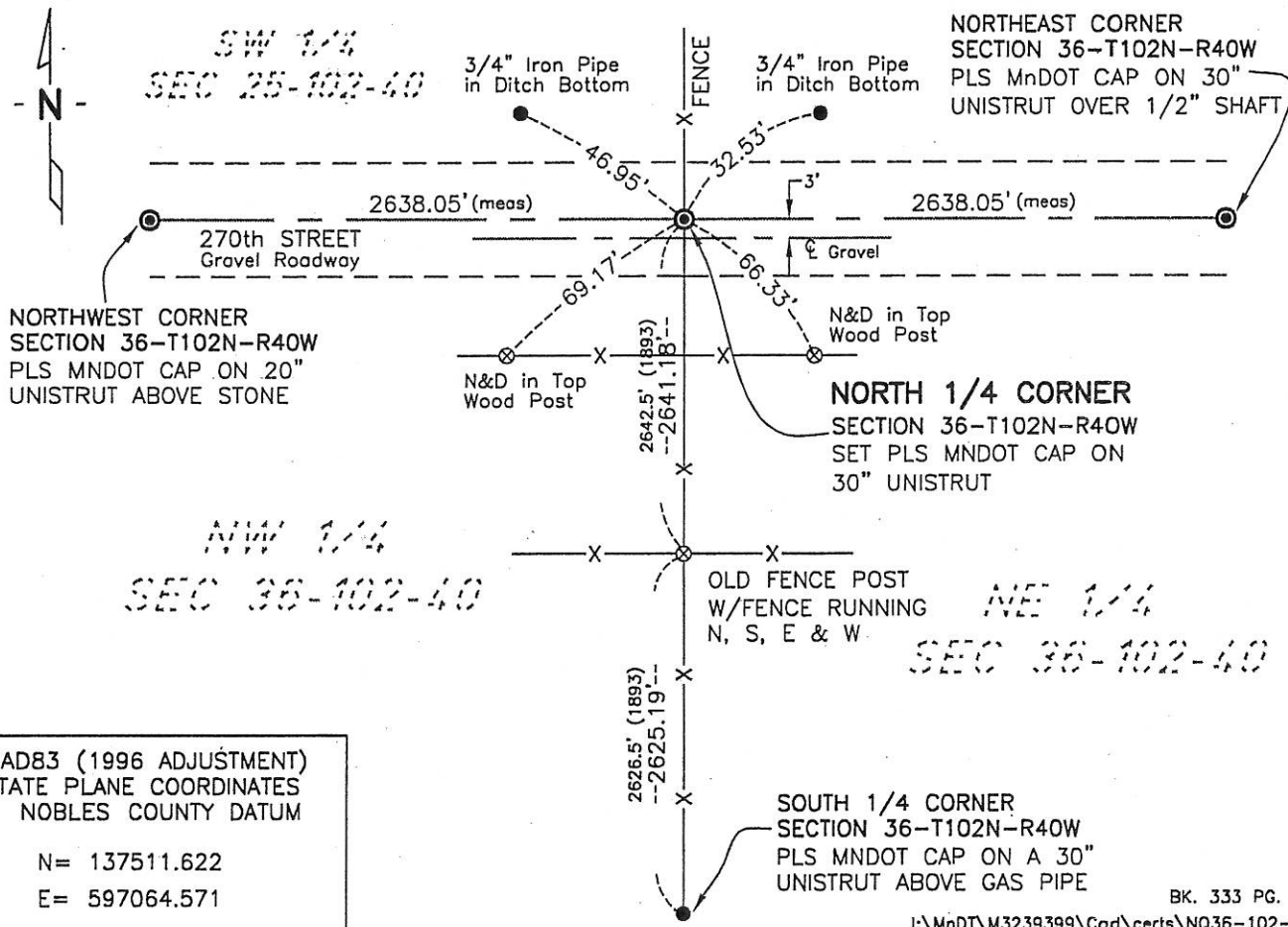
NORTH 1/4 Corner of Section 36, Township 102, Range 40, 5th P.M.

STATE OF MINNESOTA, County of NOBLES

At the corner location shown on the sketch:

- On 6-2007 found a Nothing
DATE
- left monument as found, lowered monument, removed monument (explain)
- On 6-22-07 placed a PLS MNDOT CAP ON 30" UNISTRUT @ CALCULATED
DATE
POSITION (see back side for details)

SKETCH OF REFERENCE TIES



NAD83 (1996 ADJUSTMENT)
STATE PLANE COORDINATES
NOBLES COUNTY DATUM

N= 137511.622
E= 597064.571

BK. 333 PG. 65
I:\MnDT\M3239399\Cad\certs\NQ36-102-40

Statement of evidence relative to this corner location is on back of page.

I hereby certify that this document and the data contained herein was prepared by me or under my direct supervision.

Joseph A. Haefner
JOSEPH A. HAEFNER
6-28-2007
DATE

Registration No. 43909

Land surveyor, Professional Engineer
 County Surveyor, County Engineer

OFFICE OF THE COUNTY RECORDER
County of _____

I hereby certify that this document was filed in the Co. Recorders office at ____M. on the _____ day of _____ A.D., 20____

County Recorder _____
By _____, Deputy
DOCUMENT NO. _____

Statement of Evidence

North Quarter Corner Section 36, Township 102 North, Range 40 West

- 1868 -George G. Howe, U.S. Deputy Surveyor, his notes read: "East on random line between section 25 & 36, Var. 11°E" @ 40.00 chs "set temp 1/4 post" @ 79.49 chs "intersect Range line 648 lks north of corner to section 25, 30, 31 & 36" The surveyor further states "There being an error in running town line by the Township Surveyor of nearly 6 chs" the corner was then established as follows: "N 85°22'W between sections 25 & 26, Var. 11°E" @ 39.74 ½ chs "Point for 1/4 section corner falling in marsh on ground not suitable to establish the same. I set post in mound with 3 pits N, E & W 3 chs north of true 1/4 section corner"
- 26 Aug 1893 -Nobles County Recorder's Office, Surveyor's Record, Volume A-2, Page 126-127 by Milton S. Smith, County Surveyor, for a survey of the Sections 25 & 36, states "witness corner 12 rods north stake in mound under fence" distances of east 2630.2' is shown to the corresponding section corner and south 2642.5' is shown to a stake at the center of section 36.
- The surveyor also states "South 1/4 post was gone" "set gas pipe midway between section corners in a mound in center of road" a distance of north 2626.5' is shown to a stake at the center of section 36.
- 6 June 2007 -Bolton & Menk, Inc., survey crew was unable to locate any evidence of the above referenced 1893 witness corner. Bolton & Menk, Inc., survey crew found a 3/4" gas pipe 36" below gravel surface at the South Quarter Corner of Section 36 and an old corner fence post at the center of Section 36, a distance of 2625.19' was measured from said gas pipe to said fence post.
- 22 June 2007 -Bolton & Menk, Inc., calculated the position of the corner at equal distance between the northeast and northwest section corners and at a prorated distance north of the above referenced corner fence post and set a PLS MnDot Cap on a 30" Unistrut at this point. (prorated distance was established from Smith's 1893 measurement between the south quarter corner and center of section and the current measurement of the same line)
- The written evidence shows a large gap of unrecorded and unavailable information about this corner location between 1893 and 2007, however the occupational and collateral evidence suggest that the above referenced calculated position is a reasonable location as to the corner. Additional information regarding the preparation of this certificate can be obtained by contacting: Bolton & Menk, Inc., 219 North Main Street, Fairmont, MN 56013.