

CERTIFICATE OF LOCATION OF GOVERNMENT CORNER

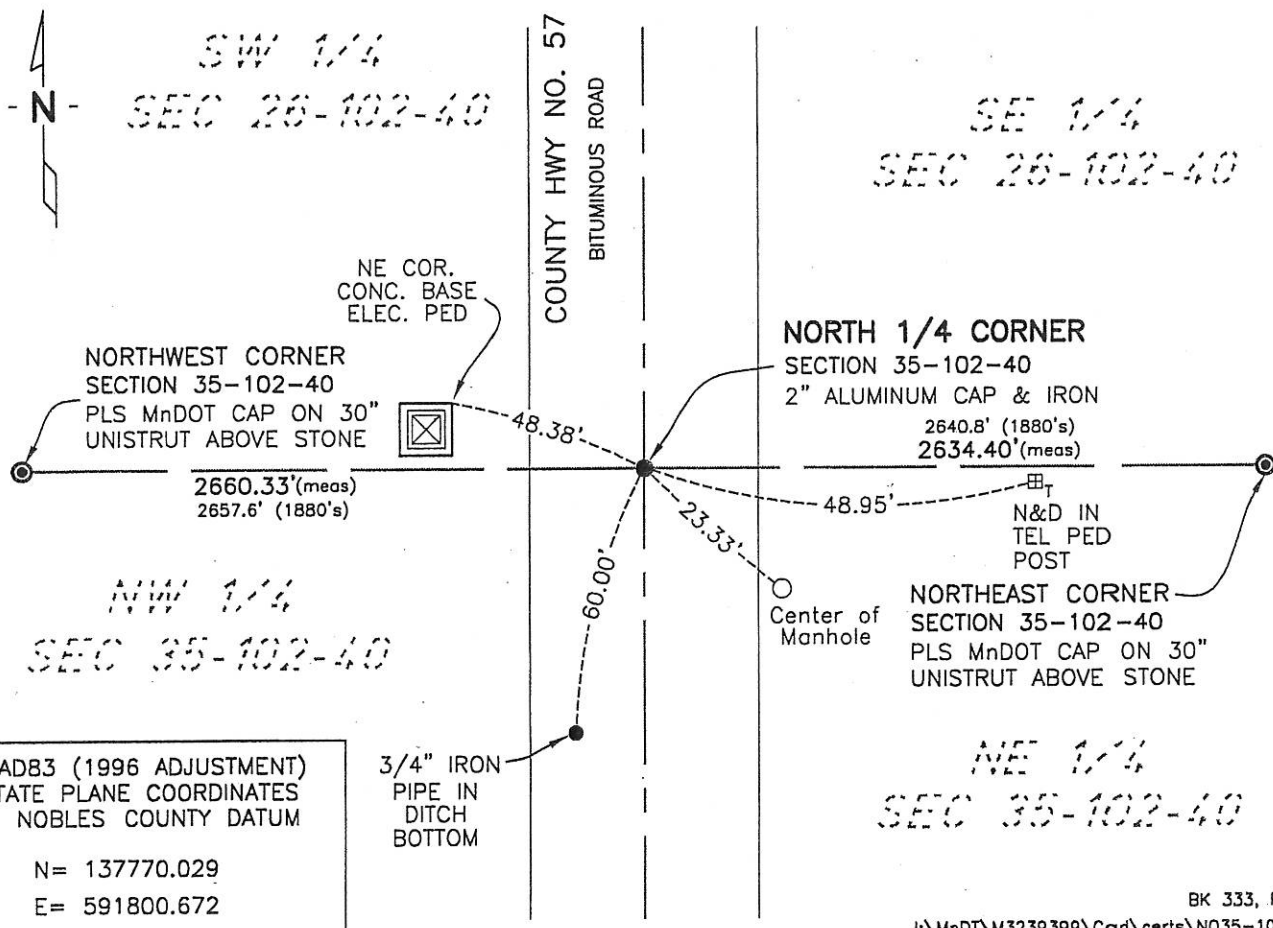
NORTH 1/4 Corner of Section 35, Township 102, Range 40, 5th P.M.

STATE OF MINNESOTA, County of NOBLES

At the corner location shown on the sketch:

- On 9-5-07 found a 2" ALUMINUM CAP & IRON IN CENTERLINE OF CO. RD. 57
4" BELOW BITUMINOUS SURFACE
 left monument as found, lowered monument, removed monument (explain)
- On _____
DATE

SKETCH OF REFERENCE TIES



NAD83 (1996 ADJUSTMENT)
 STATE PLANE COORDINATES
 NOBLES COUNTY DATUM

N= 137770.029
 E= 591800.672

BK 333, PG 31
 I:\MndT\M3239399\Cad\certs\NQ35-102-40

Statement of evidence relative to this corner location is on back of page.

I hereby certify that this document and the data contained herein was prepared by me or under my direct supervision.

Joseph A. Haefner
 JOSEPH A. HAEFNER
 DATE 6-27-2007

Registration No. 43909

Land surveyor, Professional Engineer
 County Surveyor, County Engineer

OFFICE OF THE COUNTY RECORDER
 County of _____

I hereby certify that this document was filed in the Co. Recorders office at ____M. on the _____ day of _____ A.D., 20____

County Recorder _____
 By _____, Deputy
 DOCUMENT NO. _____

North Quarter Corner Section 35, Township 102 North, Range 40 West

- 1868 -George G. Howe, U.S. Deputy Surveyor, his notes read: "East on a random line between sections 26 & 35, Var 11° @ 40.00 chs set temp 1/4 post" @ 80.22 chs "intersect north and south line 182 lks north of corner to sections 25, 26, 35 & 36" "S 88°42'W between sections 26 & 35, Var 11°E" @ 40.11 chs set post in mound with pits for the quarter section corner", no ties.
- 1880's -Nobles County Recorder's Office, Surveyor's Record, Volume A-2, Page 196, for a survey of the Section 26 shows a stone at this corner with distances of east 2640.8' and west 2657.6' to the corresponding quarter section corners.
- 9 Dec 1916 -Nobles County Recorder's Office, Surveyor's Record, Volume B, Page 91, by William A. Saxon, County Surveyor, for a survey of the Section 35, shows a stone at this corner.
- 1961 -Nobles County Highway Department records show a stone was found and a wood stake was placed at this corner.
- 1964 -Nobles County Highway Department records show a wood stake was found and an iron pin was placed at this corner.
- 1974 -Nobles County Highway Department records show an iron pin at this corner.
- 6 June 1979 -Martin Land Surveying, Job No. 79031, for a survey in Section 26, shows a survey monument found in place at this corner.
- 1987 -Nobles County Highway Department records show an iron pin was found at this corner.
- 1993 -Madsen Land Surveying Inc, Survey File No. 93116, for a survey in Section 26, states "found a 5/8" Rod (2" deep)
- 30 Apr 1998 -City of Worthington GPS survey, "found 5/8" iron pipe; "set aluminum cap on 5/8" iron rod"
- 2000 -Nobles County Highway Department records show an iron pin at this corner.
- 20 July 2006 -Minnesota Department of Transportation, survey crew found an aluminum cap and iron in the centerline of County Road 4" below the bituminous surface.
- 9 May 2007 -Bolton & Menk, Inc., survey crew found a above referenced aluminum cap and iron
- The written evidence appears to be tied to the 1880's survey and that this evidence is supported by the occupational and collateral evidence which suggest that this is a reasonable location as to the corner. Additional information regarding the preparation of this certificate can be obtained by contacting: Bolton & Menk, Inc., 219 North Main Street, Fairmont, MN 56013