

CERTIFICATE OF LOCATION OF GOVERNMENT CORNER

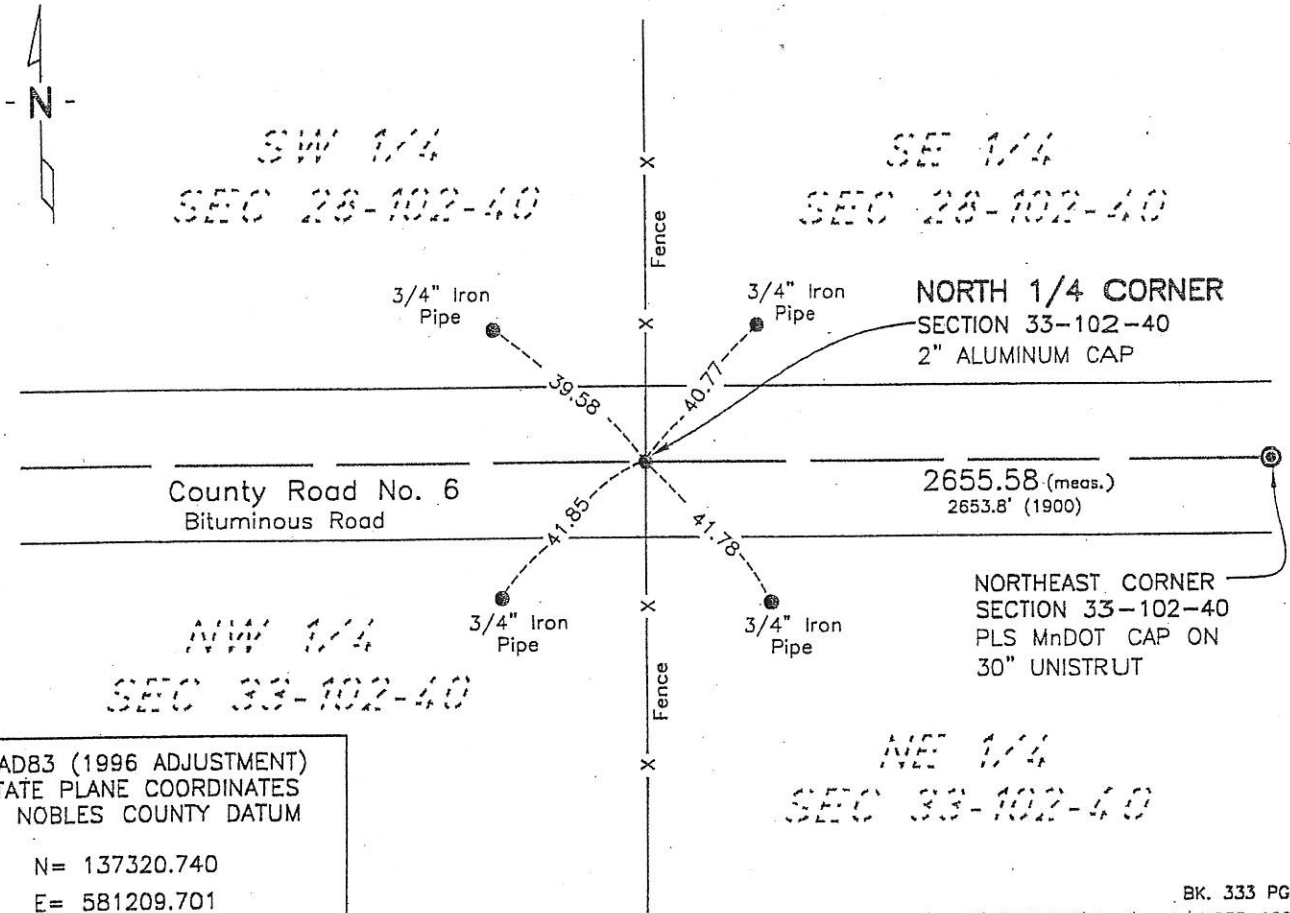
NORTH 1/4 Corner of Section 33, Township 102, Range 40, 5th P.M.

STATE OF MINNESOTA, County of NOBLES

At the corner location shown on the sketch:

- On 6-26-07 found a 2" ALUMINUM CAP MONUMENT IN CENTERLINE OF BITUMINOUS ROAD (AT SURFACE)
DATE
- left monument as found, lowered monument, removed monument (explain)
- On _____
DATE

SKETCH OF REFERENCE TIES



NAD83 (1996 ADJUSTMENT)
STATE PLANE COORDINATES
NOBLES COUNTY DATUM

N= 137320.740
E= 581209.701

BK. 333 PG. 30
I:\MnDT\M3239399\Cad\certs\NQ33-102-40

Statement of evidence relative to this corner location is on back of page.

I hereby certify that this document and the data contained herein was prepared by me or under my direct supervision.

Joseph A. Haefner 6-27-2007
JOSEPH A. HAEFNER DATE

Registration No. 43909

- Land surveyor, Professional Engineer
- County Surveyor, County Engineer

OFFICE OF THE COUNTY RECORDER

County of _____

I hereby certify that this document was filed in the Co. Recorders office at _____ M. on the _____ day of _____ A.D., 20____

County Recorder _____

By _____, Deputy

DOCUMENT NO. _____

North Quarter Corner Section 33, Township 102 North, Range 40 West

- 1868 -George G. Howe, U.S. Deputy Surveyor, his notes read: "East on a random line between sections 28 & 33, Var 11°40'E" @ 40.00 chs set temp 1/4 post" @ 79.88 chs "intersect north and south line 105 lks south of corner to sections 27, 28, 33 & 34" "N 89°15'W between sections 28 & 33, Var 11°40'E" @ 39.94 chs "set post in mound with pits for the quarter section corner", no ties
- 18 May 1900 -Nobles County Recorder's Office, Surveyor's Record, Volume A-2, Page 360 by Milton S. Smith, County Surveyor, for a survey of Section 28, shows a stone at the S 1/4 Corner of Section 28 (N 1/4 Section 33), distances of east 2653.8' and west 2633.5' are shown to the corresponding section corners.
- 1928 -Nobles County Recorder's Office, Surveyor's Record, Volume B, Page 183, by G.D. McMurtrey, County Surveyor, for a survey of Section 33, shows a stone at the N 1/4 corner. No distances are shown.
- 1967 Nobles County Highway Department records show a wood stake and an iron pipe at this corner.
- 1983 Nobles County Highway Department records show an iron pipe at this corner.
- 4 Nov 1995* -Madsen Land Surveying Inc., File No. 9547, for a survey in Section 28 shows a "found 5/8" rod (6" deep)" distances of west 2632.64' and east 2672.84 are shown to the corresponding section corners.
- 30 Apr 1998 City of Worthington GPS survey, "Found 5/8" iron pipe; set aluminum cap on 5/8" iron rod"
- 17 Dec 2003* -Zieske Land Surveying, Inc., Project No. N 0308 S, for a survey in Section 27 & 28 shows an iron monument is in-place. A distance of east 2672.78 is shown to the corresponding section corner.
- 9 May 2007 -Bolton & Menk, Inc., survey crew found an aluminum cap monument at the corner, a distance of east 2655.58' was measured to the corresponding section corner
- There is a lot of written evidence but it is not conclusive as to the true corner location, the measurement data from 1900, 1995 & 2007 are close considering the time span and the occupational and collateral evidence also support that the above referenced aluminum cap monument is in a reasonable location as to the corner. Additional information regarding the preparation of this certificate can be obtained by contacting: Bolton & Menk, Inc., 219 North Main Street, Fairmont, MN 56013
- *The above referenced 1995 Madsen survey and 2003 Zieske survey uses the incorrect corner location for the SE Corner of Section 28 (NE Section 33), thus the distances of 2672.84' & 2672.78' should be disregarded.