

CERTIFICATE OF LOCATION OF GOVERNMENT CORNER

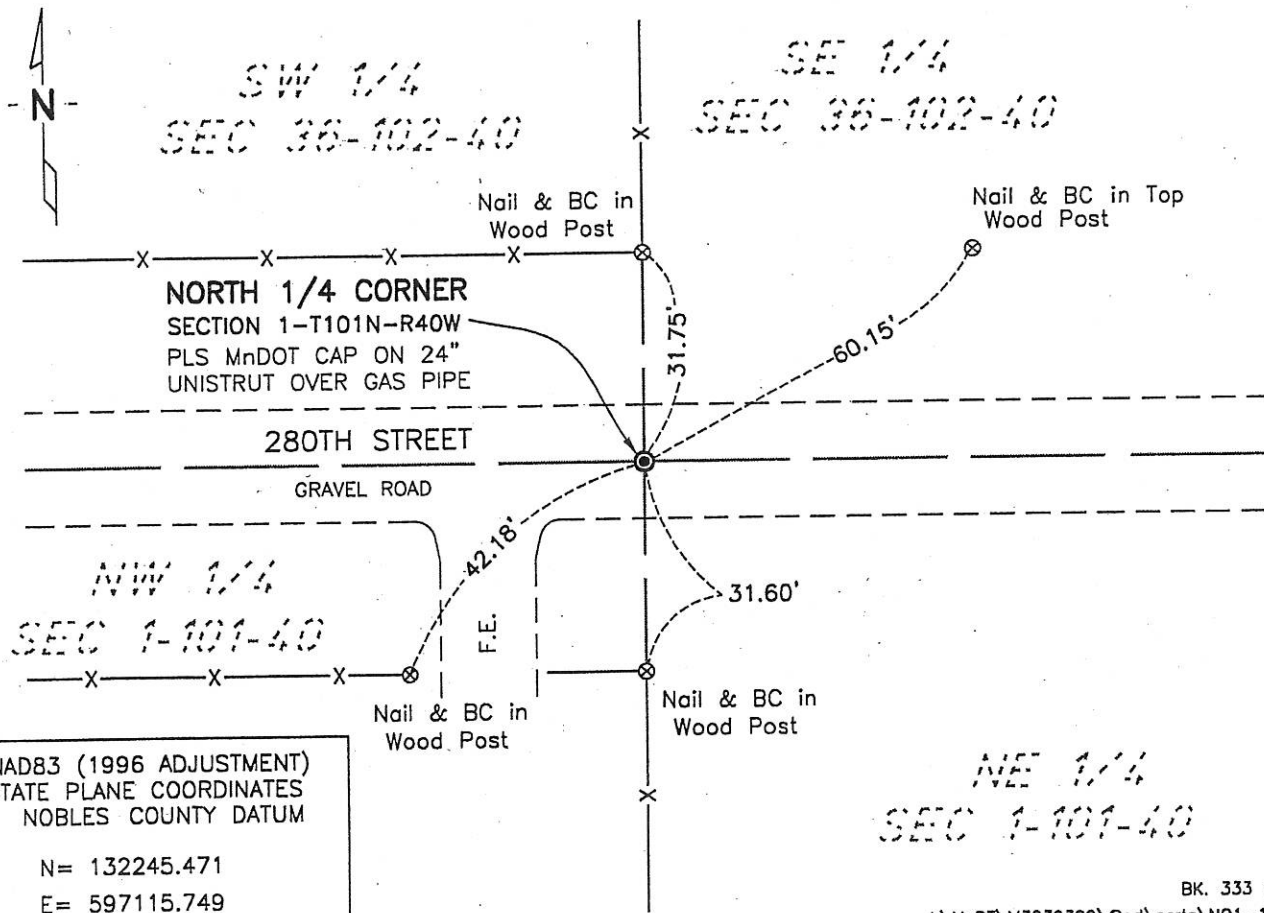
NORTH 1/4 Corner of Section 1, Township 101, Range 40, 5th P.M.

STATE OF MINNESOTA, County of NOBLES

At the corner location shown on the sketch:

- On 6-6-07 found a 7/8"x24" REBAR 6" DEEP w/WOOD STAKE BELOW REBAR
& w/ ^{DATE} 3/4" GAS PIPE BELOW STAKE (GAS PIPE 36" DEEP)
 - left monument as found, lowered monument, removed monument (explain)
- On 6-21-07 placed a PLS MNDOT CAP ON A 30" UNISTRUT (6" DEEP)
^{DATE} ABOVE GAS PIPE

SKETCH OF REFERENCE TIES



NAD83 (1996 ADJUSTMENT)
STATE PLANE COORDINATES
NOBLES COUNTY DATUM

N= 132245.471
E= 597115.749

NE 1/4
SEC 1-101-40

BK. 333 PG. 15

I:\MnDT\M3239399\Cad\certs\N01-101-40

Statement of evidence relative to this corner location is on back of page.

I hereby certify that this document and the data contained herein was prepared by me or under my direct supervision.

Joseph A. Haefner
JOSEPH A. HAEFNER
6-25-2007
DATE

Registration No. 43909

- Land surveyor, Professional Engineer
- County Surveyor, County Engineer

OFFICE OF THE COUNTY RECORDER

County of _____

I hereby certify that this document was filed in the Co. Recorders office at ____M. on the _____ day of _____ A.D., 20____

County Recorder _____

By _____, Deputy

DOCUMENT NO. _____

Statement of Evidence

North Quarter Corner Section 1, Township 101 North, Range 40 West

- 1867 -Thomas B. Walker, U.S. Deputy Surveyor, his notes read: "East Random Line Between Towns 101 & 102, Range 40." "I set temporary corners along line & at intersect town line 15.50 chs. north of corner." "Upon examination; I find my instrument grossly our of repair & adjustment" "Declination Bar badly bent by shutting the box cover on it, telescope axis askew as also telescope sights." "As my line cannot be straight, I now sure west Random line & at a point 130 lks. North of Town Corner." "My correction will be 21.23 lks. South per mile, the excess remaining at the west end." "N 87° 56' E between Sections 1 & 36, Var. 11° 30'," @ 40.00 chs "1/4 Section Corner Post in Mound", no ties
- 26 Aug 1893 -Nobles County Recorder's Office, Surveyor's Record, Volume A-2, Page 126-127 by Milton S. Smith, County Surveyor, for a survey of the Sections 25 & 36-102-40, states "South 1/4 post was gone" "set gas pipe midway between section corners in a mound in center of road, 33 ft north of line of trees at a course N83°49'W of Township Monument with a Mag. Var. of 10°07'W"
- 1916 Nobles County Highway Department records show a stone at this corner.
- 1969 Nobles County Highway Department records show a stone at this corner.
- 6 June 2007 -Bolton & Menk, Inc., survey crew found a 7/8" rebar at the surface (removed during excavation), a wood stake below rebar (removed during excavation) and a 3/4" gas pipe below wood stake (gas pipe is 36" deep)
- 21 June 2007 -Bolton & Menk, Inc., survey crew set a PLS MnDOT Cap on a 30" Unistrut on top of the above referenced gas pipe.

No evidence of the above referenced 1916 & 1969 stones were located nor was any written evidence of there origin, however the remaining evidence is conclusive back to the 1893 survey by Smith. Smith's work shows him setting the gas pipe at the lost location. The occupational and collateral evidence suggest that this is a reasonable location at to the corner. Additional information regarding the preparation of this certificate can be obtained by contacting: Bolton & Menk, Inc., 219 North Main Street, Fairmont, MN 56013.