

CERTIFICATE OF LOCATION OF GOVERNMENT CORNER

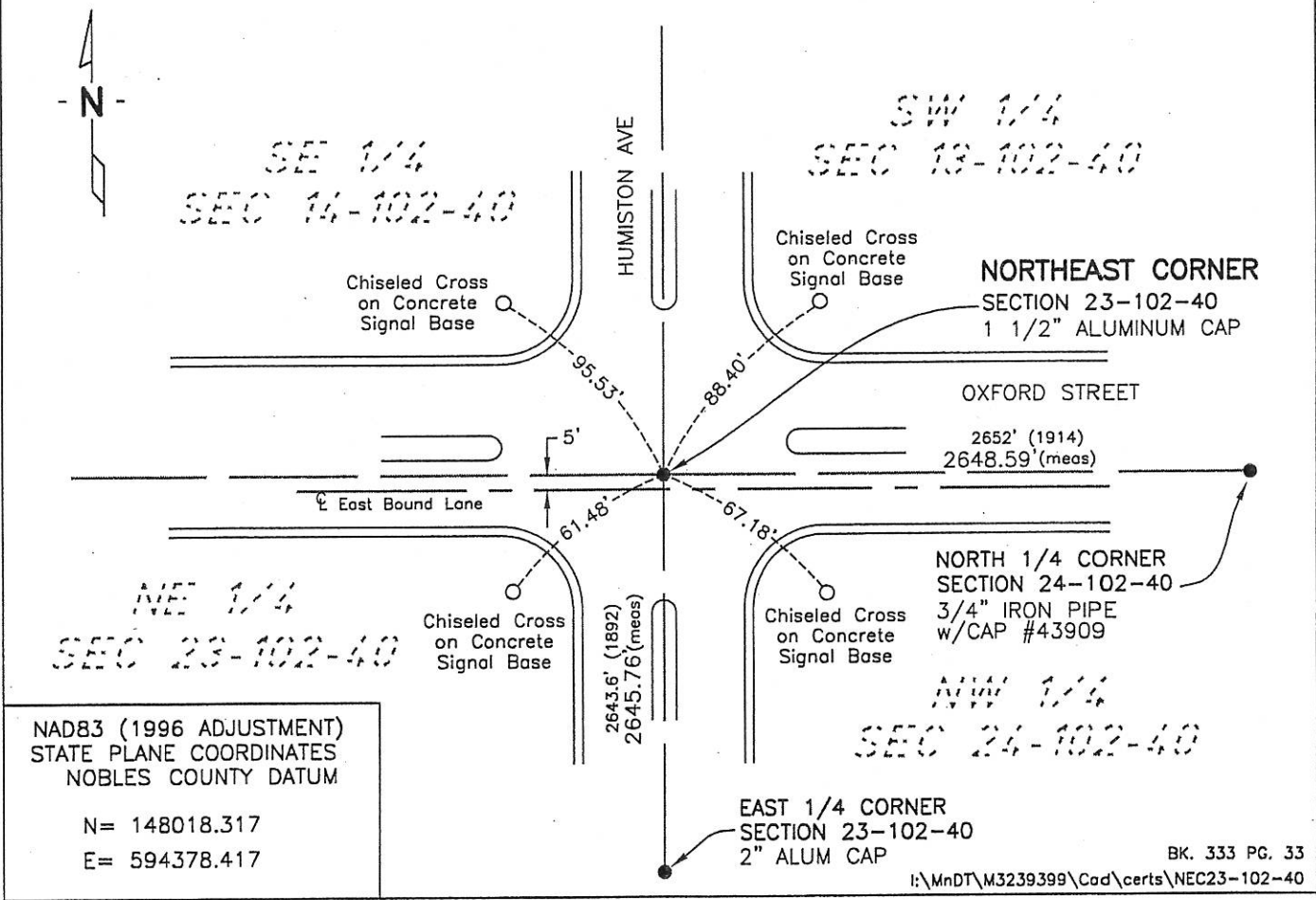
NORTHEAST Corner of Section 23, Township 102, Range 40, 5th P.M.

STATE OF MINNESOTA, County of NOBLES

At the corner location shown on the sketch:

- On 6-27-07 found a 1 1/2" ALUMINUM CAP 5' NORTH OF THE CENTERLINE OF THE EAST BOUND LAND OF OXFORD STREET
 - left monument as found, lowered monument, removed monument (explain)
- On _____ DATE _____

SKETCH OF REFERENCE TIES



Statement of evidence relative to this corner location is on back of page.

I hereby certify that this document and the data contained herein was prepared by me or under my direct supervision.

Joseph A. Haefner
 JOSEPH A. HAEFNER
 Registration No. 43909

- Land surveyor, Professional Engineer
- County Surveyor, County Engineer

OFFICE OF THE COUNTY RECORDER

County of _____

I hereby certify that this document was filed in the Co. Recorders office at _____ M. on the _____ day of _____ A.D., 20____

County Recorder _____

By _____, Deputy

DOCUMENT NO. _____

Statement of Evidence

Northeast Quarter Corner Section 23, Township 102 North, Range 40 West

- 1868 -George G. Howe, U.S. Deputy Surveyor, his notes read:
- 23 Apr 1892 -Nobles County Recorder's Office, Surveyor's Record A-2, Page 52 & 553, by Milton S. Smith, County Surveyor, for a survey of Section 24, states "NW section corner is a stone monument with 'X' set by W Shepard in government mound said stone is at the intersection of centerlines of Humiston Avenue and Oxford Street" a distance of south 2643.6' is shown to the corresponding quarter section corner
- 8 Nov 1902 -Nobles County Recorder's Office, Surveyors Record A-1, Page 127, by Milton S. Smith, County Surveyor, for a survey in Section 14, shows an old stone at the southeast corner (NE Corner of Section 23)
- 29 Oct 1914 -Nobles County Recorder's Office, Surveyors Record B, Page 59, by William A. Saxon, County Surveyor, for a survey in Section 13, shows a set stone, a distance of east 2652' is shown to the corresponding quarter section corner.
- 1939 -Nobles County Highway Department records show a stone at his corner.
- 1954 -Nobles County Highway Department records show a stone at this corner and state an iron pin was placed.
- 1960 -Nobles County Highway Department records show a disk at this corner
- 12 May 1977 -Minnesota Department of Transportation, survey crew found a 1/2 inch pin (possibly attached to aluminum cap at one time) down 0.5 feet
- 1 June 1978 -Minnesota Department of Transportation, survey crew placed a 4 inch piece broken off top of a M.H.D. Cast Iron Monument
- 29 Apr 1998 -City of Worthington GPS survey, "3/4" iron pipe in bituminous road"
- 29 Dec 2004 -Zieske Land Surveying, Inc., Project No. N 0414 S, for a survey in Section 14, shows an iron monument in place
- 5 June 2007 -Bolton & Menk, Inc., survey crew found a 1 1/2" aluminum cap, which is in agreement with the above referenced GPS position, distances of south 2645.76' and east 2648.59' were measured to the corresponding quarter section corners.
- There is a lot of written evidence but it is not conclusive as to the true corner location, the measurement data from 1892, 1914 & 2007 are close considering the time span where the occupational and collateral evidence also support that this is a reasonable location as to the corner. Additional information regarding the preparation of this certificate can be obtained by contacting: Bolton & Menk, Inc., 219 North Main Street, Fairmont, MN 5601