

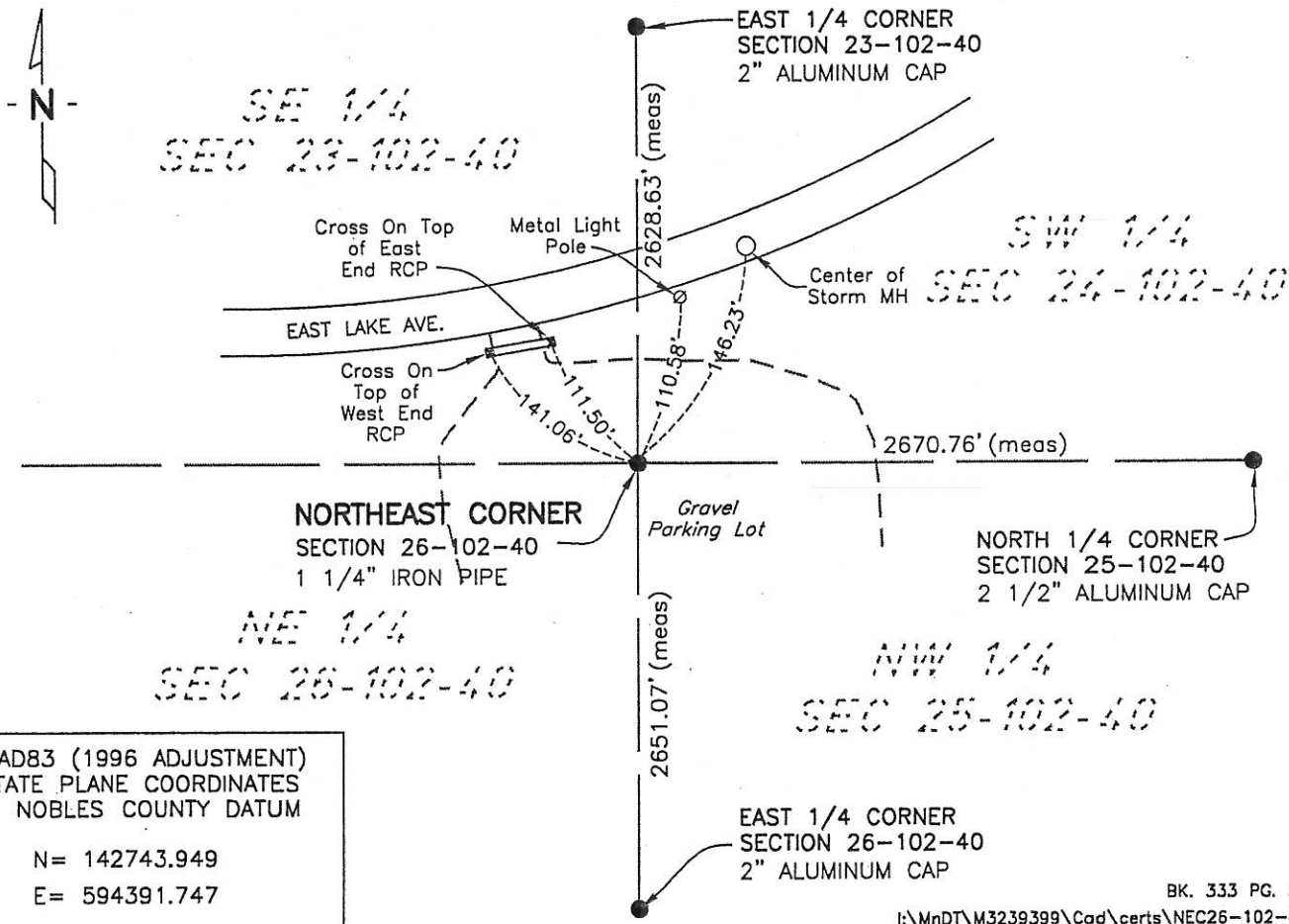
# CERTIFICATE OF LOCATION OF CORNER

NORTHEAST Corner of Section 26, Township 102, Range 40, 5th P.M.  
STATE OF MINNESOTA, County of NOBLES

At the corner location shown on the sketch:

- On 6-27-07 found a 1" IRON PIPE  
DATE
- left monument as found,  lowered monument,  removed monument (explain)
- On \_\_\_\_\_ DATE

## SKETCH OF REFERENCE TIES



NAD83 (1996 ADJUSTMENT)  
STATE PLANE COORDINATES  
NOBLES COUNTY DATUM

N= 142743.949  
E= 594391.747

BK. 333 PG. 35  
I:\MnDT\M3239399\Cad\certs\NEC26-102-40

Statement of evidence relative to this corner location is on back of page.

I hereby certify that this document and the data contained herein was prepared by me or under my direct supervision.

Joseph A. Haefner  
JOSEPH A. HAEFNER  
DATE 6-28-07

Registration No. 43909

Land surveyor,  Professional Engineer  
 County Surveyor,  County Engineer

OFFICE OF THE COUNTY RECORDER  
County of \_\_\_\_\_

I hereby certify that this document was filed in the Co. Recorders office at \_\_\_\_\_ M. on the \_\_\_\_\_ day of \_\_\_\_\_ A.D., 20\_\_\_\_

County Recorder \_\_\_\_\_  
By \_\_\_\_\_, Deputy  
DOCUMENT NO. \_\_\_\_\_

Statement of Evidence

Northeast Corner Section 26, Township 102 North, Range 40 West

George G. Howe, U.S. Deputy Surveyor, surveyed Township 102 North, Range 40 West in 1868. The Northeast Corner of Section 26 falls in a meanderable lake and was not set. The following evidence will show the corner has been established perpetuated for over 100 years. Therefore, this certificate is being prepared to further perpetuate its location and for guidance of future surveyors.

23 Apr 1892 -Nobles County Recorder's Office, Surveyor's Record, Volume A-2, Page 196, by Milton S. Smith, County Surveyor, for a survey of the Section 24, states "section corner is in East Okabena Lake"

22 Oct 1894 -Original Plat of East Addition, by Milton S. Smith, County Surveyor, shows a gas pipe at the section corner for sections 23, 24, 25 & 26.

20 June 1910 -Original County Auditor's Plat of East Okabena Lake Bed, by William A. Saxon, County Surveyor, shows the section corner for sections 23, 24, 25 & 26.

Nov 1929 -Station Map - Lands, Tracks and Structures of Chicago, St. Paul, Minneapolis & Omaha Railway shows the corner.

13 Sep 1982 -Northland Engineers & Surveying, Inc., File No. 82011, Recorded as Document No. 215480, for a survey of Chicago, Rock Island & Pacific Railroad Monumentation, states "set monument" however, the graphical depiction on the survey drawing indicates the monument was found. The survey shows a bend along the north line of the NW ¼ of section 25 at the meander corner.

31 July 1991 -Bolton & Menk, Inc., Project No. FS91.0089, for a survey in Section 26, states "found iron pipe by Doc. No. 215480

28 Mar 2003 -Madsen Land Surveying Inc, Survey File No. 03040, for a survey in Section 26, shows a found 1" iron pipe at this corner

5 June 2007 -Bolton & Menk, Inc., survey crew found a 1 ¼" iron pipe

The above referenced 1982 survey shows a discrepancy as to whether the corner was found or set. Because the 1982 survey shows a bend in the section line along the north line of the NW ¼ at the meander corner, it is reasonable to assume that found monuments are being held. There I conclude the corner must have been found and the surveyor replaced the existing monument.

The evidence shows a large gap of unrecorded and unavailable information about this corner location between 1910 and 1980, however, no other evidence was found for the location of this corner therefore the 1 ¼" iron pipe is the best evidence as to the corner location. Additional information regarding the preparation of this certificate can be obtained by contacting: Bolton & Menk, Inc., 219 North Main Street, Fairmont, MN 56013.