

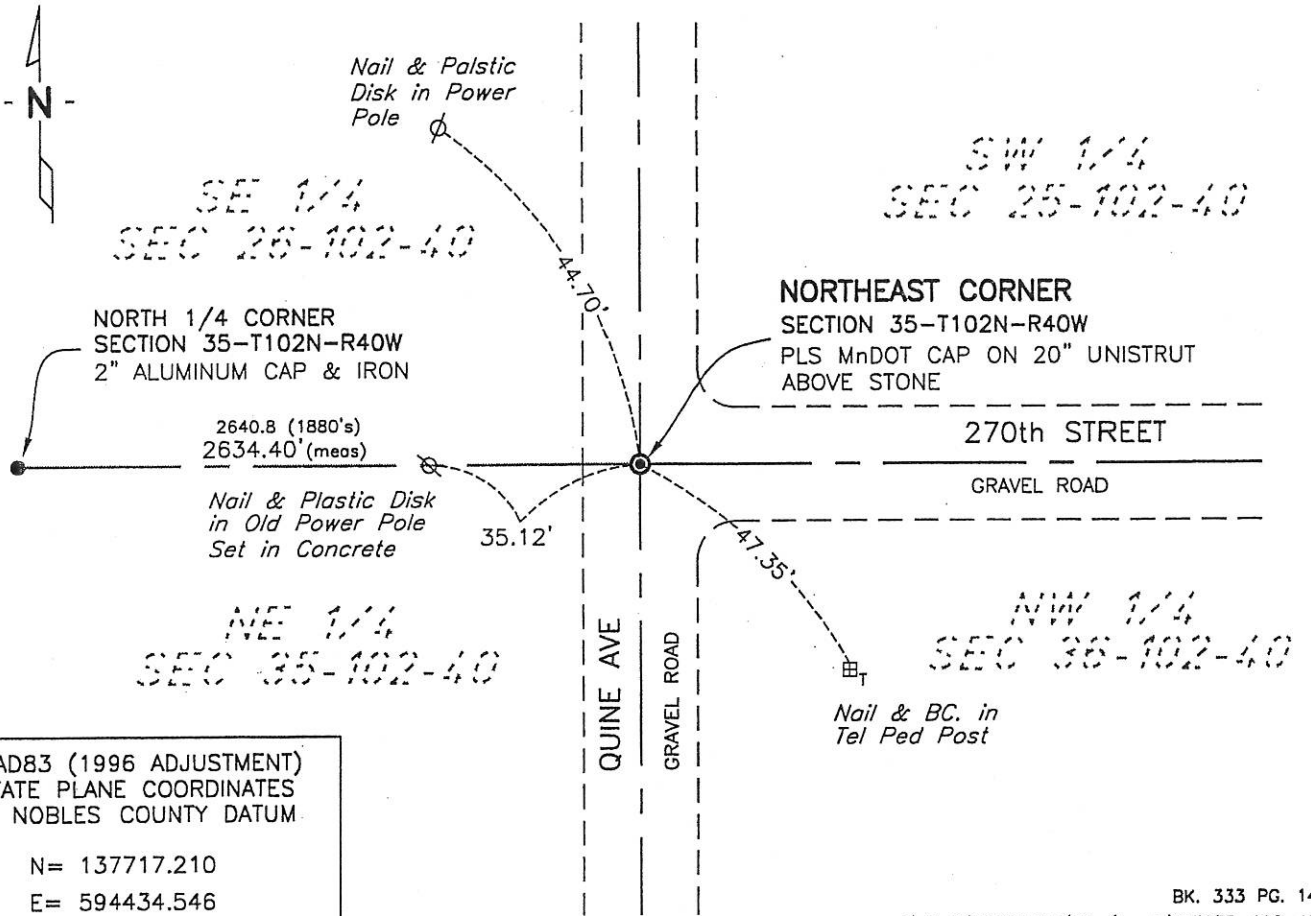
CERTIFICATE OF LOCATION OF GOVERNMENT CORNER

NORTHEAST Corner of Section 35, Township 102, Range 40, 5th P.M.
STATE OF MINNESOTA, County of NOBLES

At the corner location shown on the sketch:

- On 6-6-07 found a 1/2" x 30" REBAR & 1" SHAFT (both removed during excavation) & GRAY STONE WITH HIGH POINT
 - left monument as found, lowered monument, removed monument (explain)
- On 6-21-07 placed a 3/4x18" IP @ NW CORNER OF STONE WITH A PLS MnDOT CAP ON 20" UNISTRUT ABOVE STONE

SKETCH OF REFERENCE TIES



NAD83 (1996 ADJUSTMENT)
STATE PLANE COORDINATES
NOBLES COUNTY DATUM

N= 137717.210
E= 594434.546

BK. 333 PG. 14
I:\MnDT\M3239399\Cad\certs\NEC35-102-40

Statement of evidence relative to this corner location is on back of page.

I hereby certify that this document and the data contained herein was prepared by me or under my direct supervision.

Joseph A. Haefner
JOSEPH A. HAEFNER
DATE 6-27-07

Registration No. 43909

- Land surveyor, Professional Engineer
- County Surveyor, County Engineer

OFFICE OF THE COUNTY RECORDER
County of _____

I hereby certify that this document was filed in the Co. Recorders office at ____M. on the _____ day of _____ A.D., 20__

County Recorder _____

By _____, Deputy

DOCUMENT NO. _____

Statement of Evidence

Northeast Corner Section 35, Township 102 North, Range 40 West

- 1867 -George G. Howe, U.S. Deputy Surveyor, his notes read: "North between sections 35 & 36, Var. 11°E" @ 80.00 chs "set post in mound with pits for corner to sections 25, 26, 35 & 36", no ties
- 1880's -Nobles County Recorder's Office, Surveyor's Record, Volume A-2, Page 196, for a survey of the Section 26 shows an "iron bolt" at the SE corner of section 26 (NE corner of section 35) distances of west 2640.8' and north 2373.8' are shown to the corresponding quarter section corners.
- 26 Aug 1893 -Nobles County Recorder's Office, Surveyor's Record, Volume A-2, Page 126-127 by Milton S. Smith, County Surveyor, for a survey of the Sections 25 & 36, states "Iron Bolt in mound also original stake" a distance of north 2373.8' is shown to the corresponding quarter section corner.
- 1935 -Nobles County Highway Department records show a stone at the corner
- 1942 -Nobles County Highway Department records show a stone at the corner
- 30 Sept 1951 -Nobles County Recorder's Office, Surveyor's Record, Volume B, Page 197, by Nystrom, County Surveyor, for a survey of the west line of Section 36 shows a "stone point up" at this corner, no distances are shown.
- 1954 -Nobles County Highway Department records show a stone in place at the corner and that an iron pin was placed.
- 9 May 2007 -Bolton & Menk, Inc., survey crew survey crew found a ½" x 30" shaft at the surface (removed during excavation), a 1" shaft 1.2' deep (removed during excavation) and a gray stone with a point 1.6' deep. The 1" shaft was found to be on the SE side of the stone with the ½" shaft being above the 1" shaft. A distances of west 2634.55' was measured from the highpoint of the stone to the corresponding quarter section corners. No evidence of the above referenced iron bolt was found.
- 21 June 2007 -Bolton & Menk, Inc., survey crew set a PLS MnDot Cap on a 30" Unistrut on top of the above referenced highpoint of stone.

The evidence does not tie the stone to the 1880's & 1893 iron bolt or the original stake, however the measurement data from the 1800's, 1893, and 2007 are generally reasonable considering the time span and the occupational and collateral evidence also supports that the stone is a reasonable location as to the corner. Additional information regarding the preparation of this certificate can be obtained by contacting: Bolton & Menk, Inc., 219 North Main Street, Fairmont, MN 56013.