

Statement of Evidence

Northeast Corner Section 34, Township 102 North, Range 40 West

- 1868 -George G. Howe, U.S. Deputy Surveyor, his notes read: "North between sections 34 & 35, Var.  $11^{\circ}15'E$ " @ 80.00 chs "set post in mound with pits for corner to sections 26, 27, 34 & 35, no ties
- 1880's -Nobles County Recorder's Office, Surveyor's Record, Volume A-2, Page 196, for a survey of the Section 26 shows a stone at this corner with a distance of east 2657.6' to the corresponding quarter section corner.
- 20 July 1914 -Nobles County Recorder's Office, Surveyor's Record, Volume B, Page 57, by William A. Saxon, County Surveyor, for a survey of Section 34 shows an "old stone" at this corner with distances of west 2652' and south 2647' to the corresponding quarter section corners.
- 9 June 1952 -Nobles County Recorder's Office, Surveyor's Record, Volume B, Page 206, by the County Surveyor, for a survey of Section 34 shows a "stone" at this corner, no distances are shown.
- 1963 Nobles County Highway Department records state a stone was found and an iron pin was placed at this corner. The corner had the following ties:  
Spike in TP – 32.50' W  
Spike in fence post - 48.00' SW  
Spike in Cor Fence Post – 35.50' E
- 15 July 1992 -Madsen Land Surveying Inc, Survey File No. 9275, for a survey in Section 27 states "found an axle shaft (2" deep)"
- 30 Apr 1998 -City of Worthington GPS survey, "gear on iron shaft; replaced with aluminum cap on 5/8" iron rod"
- 20 July 2006 -Minnesota Department of Transportation, survey crew found an aluminum cap on an iron pipe 2' west of the centerline of gravel road and 2' south of a fence running east.
- 9 May 2007 -Bolton & Menk, Inc., survey crew survey crew found the above referenced aluminum cap & iron (removed during excavation) and a stone with an "X" below said aluminum cap & iron and set a 3/4" iron pipe at the NW corner of the stone. Distances of south 2647.57' east 2660.38' and west 2649.59' was measured to the corresponding quarter section corners.
- 21 June 2007 -Bolton & Menk, Inc., survey crew set a PLS MnDOT Cap on a 24" Unistrut over the above referenced stone.

The evidence is conclusive back to the 1880's survey and the measurement data from the 1800's, 1914, and 2007 are close considering the time span; therefore I accept this as the true corner location. Additional information regarding the preparation of this certificate can be obtained by contacting: Bolton & Menk, Inc., 219 North Main Street, Fairmont, MN 56013.

# CERTIFICATE OF LOCATION OF GOVERNMENT CORNER

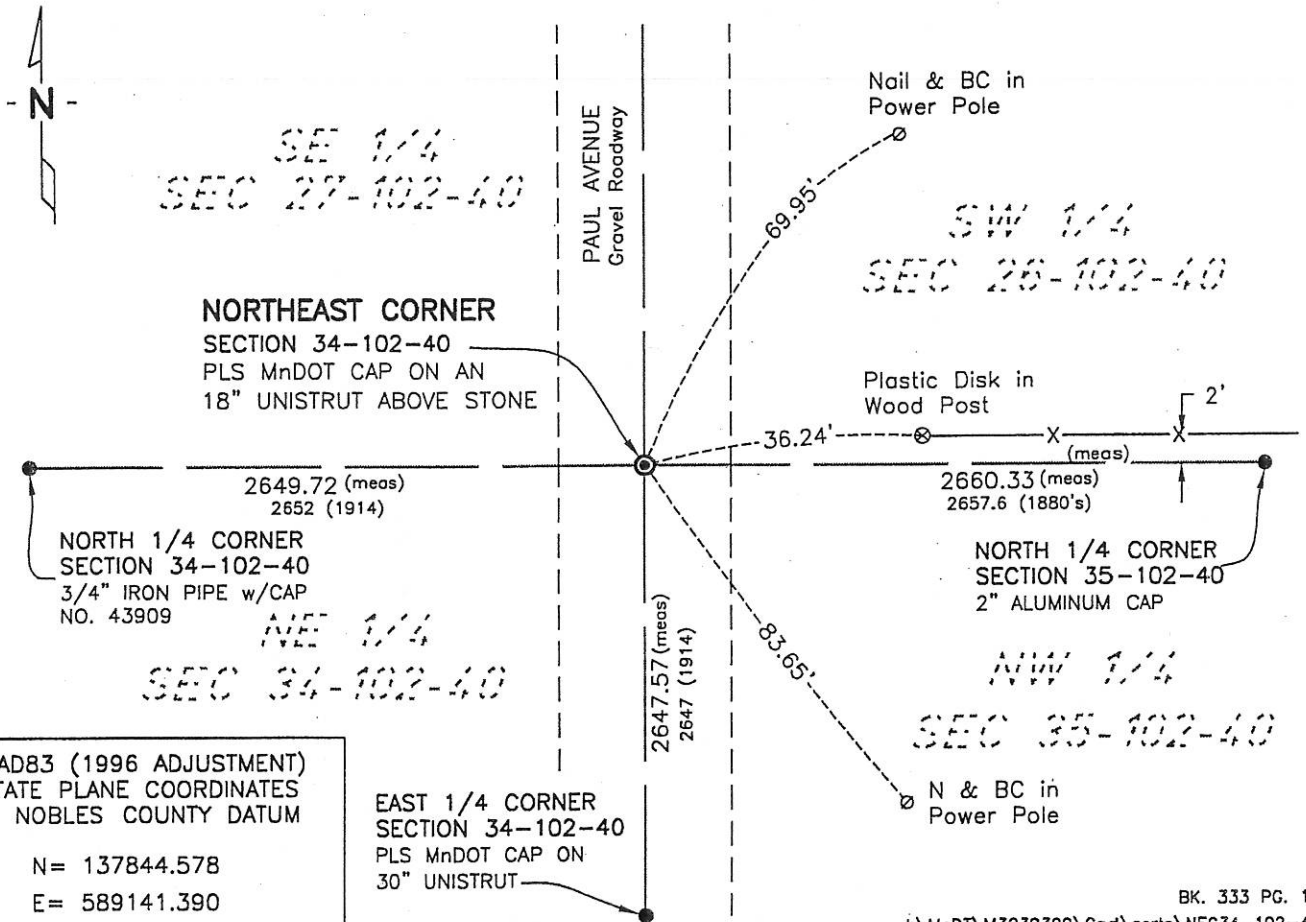
NORTHEAST Corner of Section 34, Township 102, Range 40, 5th P.M.

STATE OF MINNESOTA, County of NOBLES

At the corner location shown on the sketch:

- On 6-06-07 found a ALUM CAP & IRON (Removed during excavation)  
DATE  
AND A STONE WITH "X" BELOW (3.5' DEEP)
- left monument as found,  lowered monument,  removed monument (explain)
- On 6-26-07 placed a 3/4" IP @ NW CORNER OF STONE AND A PLS  
DATE  
MnDOT CAP ON 18" UNISTRUT ABOVE STONE

### SKETCH OF REFERENCE TIES



Statement of evidence relative to this corner location is on back of page.

I hereby certify that this document and the data contained herein was prepared by me or under my direct supervision.

Joseph A. Haefner 6-27-2007  
DATE  
 JOSEPH A. HAEFNER

Registration No. 43909

- Land surveyor,  Professional Engineer
- County Surveyor,  County Engineer

### OFFICE OF THE COUNTY RECORDER

County of \_\_\_\_\_

I hereby certify that this document was filed in the Co. Recorders office at \_\_\_\_M. on the \_\_\_\_\_ day of \_\_\_\_\_ A.D., 20\_\_\_\_

County Recorder \_\_\_\_\_

By \_\_\_\_\_, Deputy

DOCUMENT NO. \_\_\_\_\_