

CERTIFICATE OF LOCATION OF GOVERNMENT CORNER

EAST 1/4 Corner of Section 23, Township 102, Range 40, 5th P.M.

STATE OF MINNESOTA, County of NOBLES

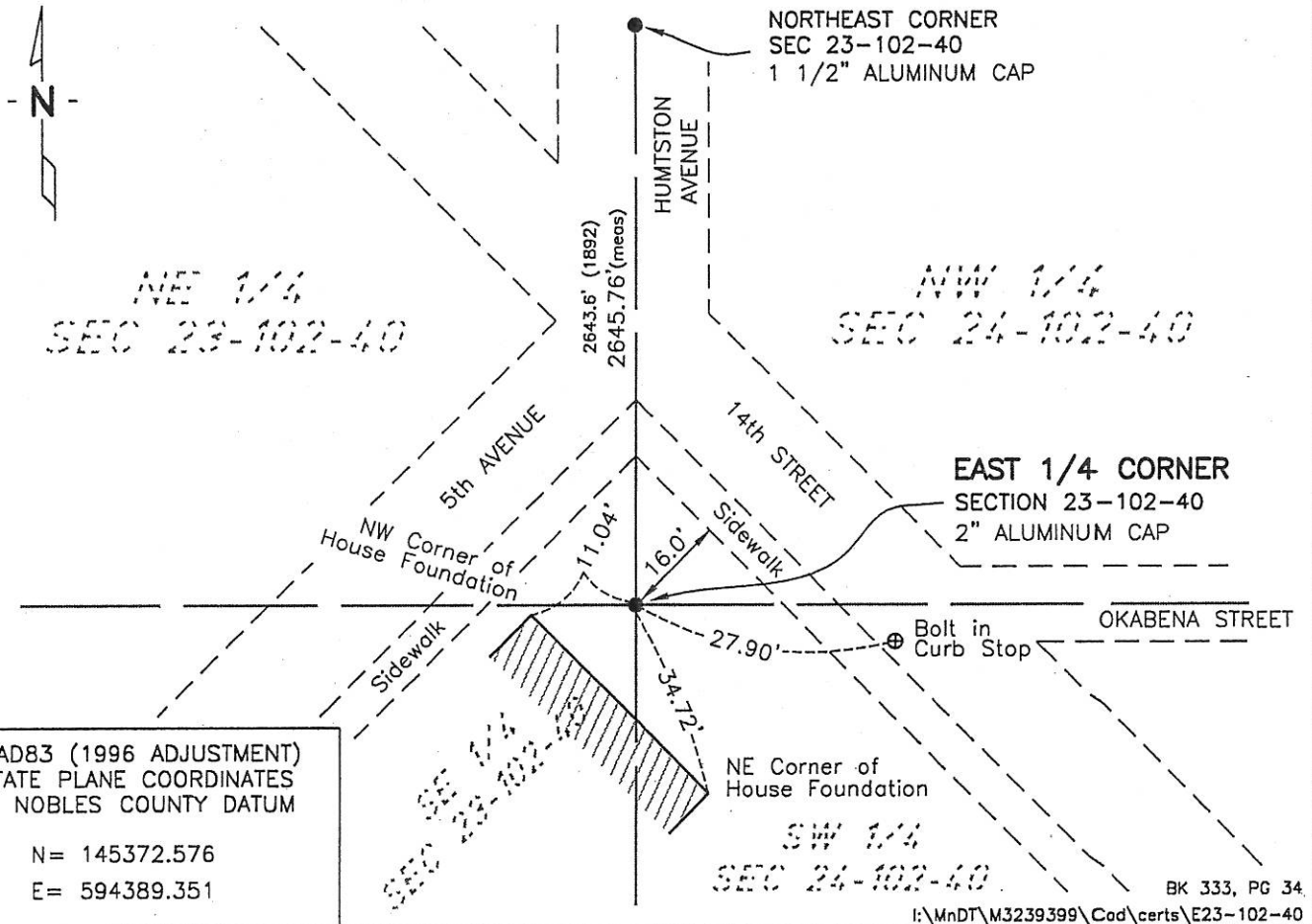
At the corner location shown on the sketch:

On 6-27-07 found a 2" ALUMINUM CAP & IRON
DATE

left monument as found, lowered monument, removed monument (explain)

On _____ DATE

SKETCH OF REFERENCE TIES



Statement of evidence relative to this corner location is on back of page.

I hereby certify that this document and the data contained herein was prepared by me or under my direct supervision.

Joseph A. Haefner 6-27-2007
JOSEPH A. HAEFNER DATE

Registration No. 43909

- Land surveyor, Professional Engineer
- County Surveyor, County Engineer

OFFICE OF THE COUNTY RECORDER

County of _____

I hereby certify that this document was filed in the Co. Recorders office at ____M. on the _____ day of _____ A.D., 20____

County Recorder _____

By _____, Deputy

DOCUMENT NO. _____

Statement of Evidence

East Quarter Corner Section 23, Township 102 North, Range 40 West

- 1868 -George G. Howe, U.S. Deputy Surveyor, his notes read:
- 23 Apr 1892 -Nobles County Recorder's Office, Surveyor's Record A-2, Page 52 & 553, by Milton S. Smith, County Surveyor, for a survey of Section 24, states "1/4 post on west line is a stone monument at the intersection of centerlines of Humiston Avenue and Okabena Street extended said monument is situated in Lot Block 42 in original town of Worthington a distance of north 2643.6' is shown to the corresponding section corner.
- 18 May 1980 -Minnesota Department of Transportation, survey crew found a 1/2" diameter iron pipe, 0.5 foot below grass surface
- 13 Sep 1982 -Northland Engineers & Surveying, Inc., File No. 82011, Recorded as Document No. 215480, for a survey of Chicago, Rock Island & Pacific Railroad Monumentation, states "Found monument (1/2" iron pipe)"
- 29 Apr 1998 City of Worthington GPS survey, "Found 1/2" iron pipe; set alum cap on 5/8" iron rod"
- 7 July 2004 -Madsen Land Surveying Inc., Survey File No. 04082, for a survey in Section 24, states "5/8" iron monument with an aluminum cap
- 5 June 2007 -Bolton & Menk, Inc., survey crew found the above referenced aluminum cap and iron. Bolton & Menk, Inc. searched within a 10' radius of the aluminum cap with a 6' probe but was unable to locate the above referenced 1892 stone monument. Said aluminum cap lies 6.2' north of the existing house foundation. It is assumed the 1894 stone monument was destroyed during the construction of the house. A distance of north 2645.76' was measured to the corresponding section corners.
- The written evidence shows a large gap of unrecorded and unavailable information about this corner location between 1892 and 1980, however the measurement data from 1892 & 2007 are close considering the time span and the occupational and collateral evidence suggest that this is a reasonable location as to the corner. Additional information regarding the preparation of this certificate can be obtained by contacting: Bolton & Menk, Inc., 219 North Main Street, Fairmont, MN 56013.