

# CERTIFICATE OF LOCATION OF CORNER

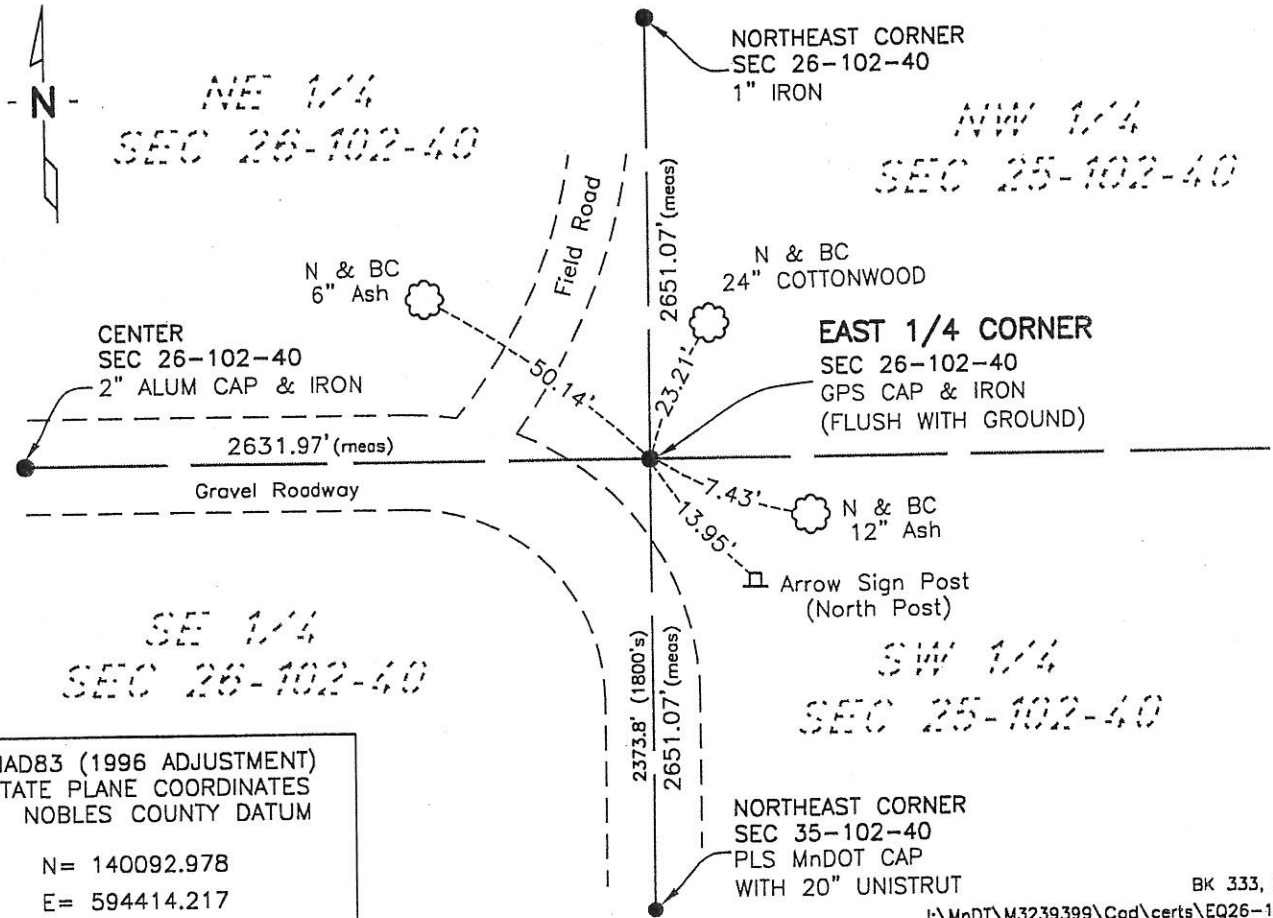
EAST 1/4 Corner of Section 26, Township 102, Range 40, 5th P.M.

STATE OF MINNESOTA, County of NOBLES

At the corner location shown on the sketch:

- On 7-20-06 found a GPS CAP & IRON (FLUSH WITH GROUND)  
DATE
- left monument as found,  lowered monument,  removed monument (explain)
- On \_\_\_\_\_  
DATE

### SKETCH OF REFERENCE TIES



NAD83 (1996 ADJUSTMENT)  
STATE PLANE COORDINATES  
NOBLES COUNTY DATUM

N = 140092.978  
E = 594414.217

BK 333, PG 32  
I:\MnDT\M3239399\Cad\certs\EQ26-102-40

Statement of evidence relative to this corner location is on back of page.

I hereby certify that this document and the data contained herein was prepared by me or under my direct supervision.

Joseph A. Haefner      6-28-2007  
JOSEPH A. HAEFNER      DATE

Registration No. 43909

- Land surveyor,     Professional Engineer
- County Surveyor,    County Engineer

### OFFICE OF THE COUNTY RECORDER

County of \_\_\_\_\_

I hereby certify that this document was filed in the Co. Recorders office at \_\_\_\_ M. on the \_\_\_\_\_ day of \_\_\_\_\_ A.D., 20\_\_

County Recorder \_\_\_\_\_

By \_\_\_\_\_, Deputy

DOCUMENT NO. \_\_\_\_\_

East Quarter Corner Section 26, Township 102 North, Range 40 West

George G. Howe, U.S. Deputy Surveyor, surveyed Township 102 North, Range 40 West in 1868. The East Quarter Corner of Section 26 falls in a meanderable lake and was not set. The following evidence will show the corner has been established and perpetuated for over 120 years. Therefore, this certificate is being prepared to further perpetuate its location and for guidance of future surveyors.

1880's -Nobles County Recorder's Office, Surveyor's Record, Volume A-2, Page 196, for a survey of the Section 26 shows a oak stake and mound at the east 1/4 corner, a distances of south 2373.8' is shown to the corresponding section corners.

20 June 1910 -Original County Auditor's Plat of East Okabena Lake Bed, by William A. Saxson, County Surveyor, shows a 1/4 corner between sections 25 & 26.

18 Jan 1980 -Nobles County Recorder's Office, Certificate of Location of Government Corner, filed January 18, 1980, by Timothy J. Lehn, states "dug hole ± 8' square at the location down to below the original topsoil (which is believed was filled for a road about 10 years earlier), found no evidence of the oak stake" "placed a 1/2" iron pipe flush with cap" "this location lines up with the township road west and south and with an old fence running north: ties are shown as follows:  
Nail & Bottle cap in 18" Cottonwood - 23.52' NE  
Nail through Can in S. side Power Pole - 99.96' NW  
Nail through Can in SE side Power Pole - 106.03 SW

13 Sep 1982 -Northland Engineers & Surveying, Inc., File No. 82011, Recorded as Document No. 215480, for a survey of Chicago, Rock Island & Pacific Railroad Monumentation, states "found monument (1/2" iron pipe with w/cap no. 12253)"

undated -Zieske Land Surveying Inc, Project No. N9912S, for a survey in Section 26, shows a 3/4" iron monument with surveyors cap 12253.

30 Apr 1998 -City of Worthington GPS survey, "found 5/8" iron pipe; set alum cap on 5/8" iron rod"  
28 Mar 2003 -Madsen Land Surveying Inc, Survey File No. 03040, for a survey in Section 26, shows a found iron monument at this corner.

20 July 2006 -Minnesota Department of Transportation, survey crew found an aluminum cap and iron (flush with ground).

5 June 2007 -Bolton & Menk, Inc., survey crew found the above referenced aluminum cap and iron. A distance of south 2375.80' was measured to the corresponding section corners.

The written evidence shows a large gap of unrecorded and unavailable information about this corner location between 1910 and 1980. Because of the 1980 excavation it is believed no other evidence exists therefore, the aluminum cap is the best evidence of the corner location. The occupational and collateral evidence also support this decision along with the fact that the measurement data from 1880's and 2007 are close considering the time span. Additional information regarding the preparation of this certificate can be obtained by contacting: Bolton & Menk, Inc., 219 North Main Street, Fairmont, MN 56013.