

CERTIFICATE OF LOCATION OF GOVERNMENT CORNER

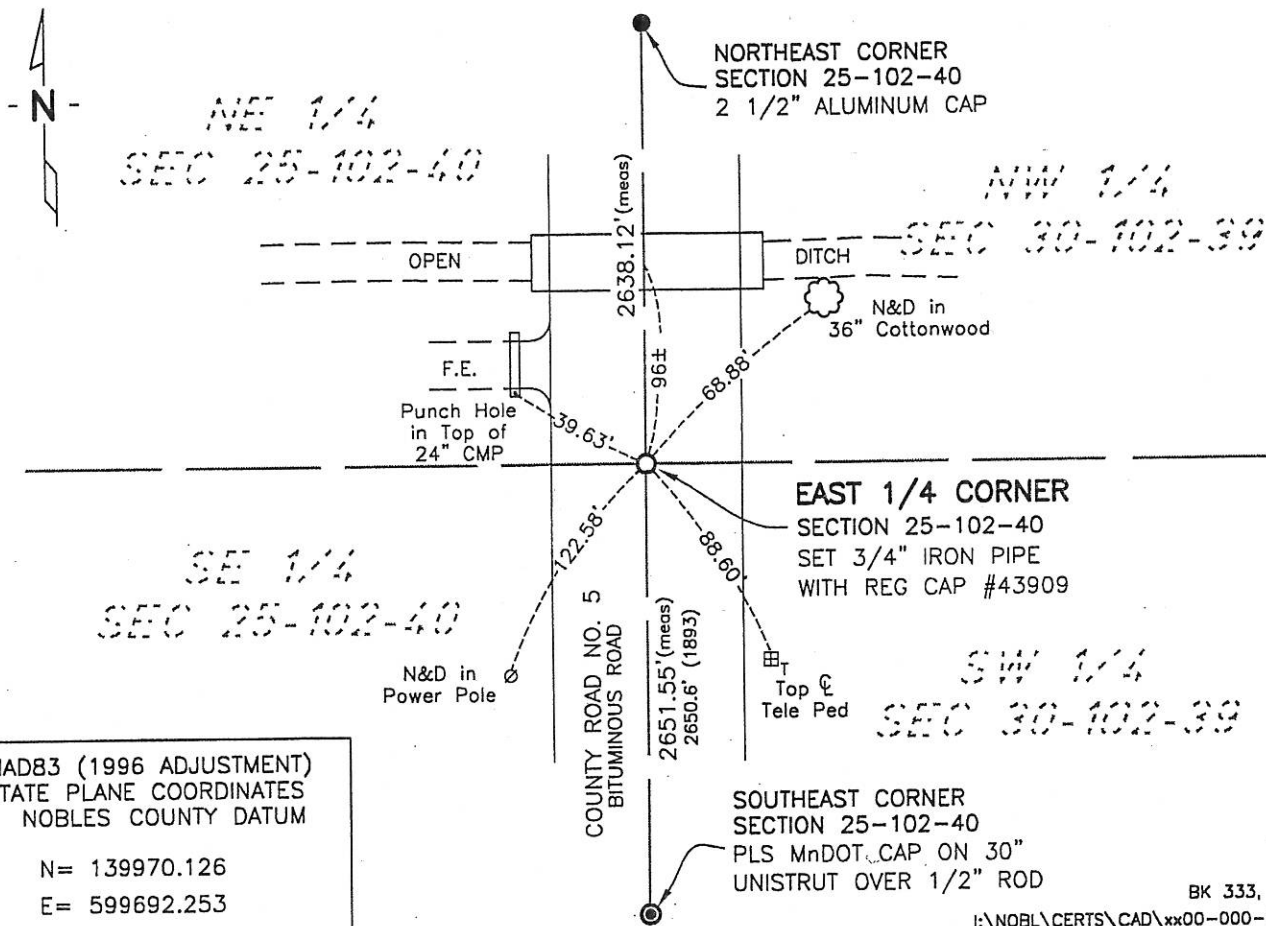
EAST 1/4 Corner of Section 25, Township 102, Range 40, 5th P.M.

STATE OF MINNESOTA, County of NOBLES

At the corner location shown on the sketch:

- On 6-27-07 found a SPIKE IN THE CENTERLINE OF COUNTY ROAD NO. 5
DATE
- left monument as found, lowered monument, removed monument (explain)
- On 6-27-07 placed a 3/4" X 18" WITH REG CAP #43909 IN PLACE OF SPIKE
DATE

SKETCH OF REFERENCE TIES



Statement of evidence relative to this corner location is on back of page.

I hereby certify that this document and the data contained herein was prepared by me or under my direct supervision.

Joseph A. Haefner
JOSEPH A. HAEFNER
DATE 6-28-2007

Registration No. 43909

- Land surveyor, Professional Engineer
- County Surveyor, County Engineer

OFFICE OF THE COUNTY RECORDER

County of _____

I hereby certify that this document was filed in the Co. Recorders office at ____ M. on the _____ day of _____ A.D., 20__

County Recorder _____

By _____, Deputy

DOCUMENT NO. _____

Statement of Evidence

East Quarter Corner Section 25, Township 102 North, Range 40 West

- 1867 -T.B. Walker, U.S. Deputy Surveyor, his notes read: "North between sections 25 & 30, Var. 11°40'E" @ 40.00 chs "point in small wet marsh for 1/4 section corner, W.C. post in mound & 50 lks north"
- 14 Aug 1891* -Nobles County Recorder's Office, Surveyor's Record, Volume A-2, Page 16 by Milton S. Smith, County Surveyor, for a survey of NW 1/4 Section 30-102-39, shows an iron bolt witness corner 9.50 chs south of the W 1/4 of Section 30 (E 1/4 Section 25) a distance of north 2692' to the corresponding section corner.
- 25 Aug 1891* -Nobles County Recorder's Office, Surveyor's Record, Volume A-2, Page 20 by Milton S. Smith, County Surveyor, for a survey of Section 30-102-39, shows stake at the W 1/4 of Section 30 (E 1/4 Section 25) and an iron bolt witness corner 9.50 chs south. The survey also shows stones at the S 1/6 of the NE 1/4 and at the center of section and a "tooth" at the S 1/6 of the NW 1/4, distances of south 40.16 chs (2650.56') and north 40.79 chs (2692') are shown to the corresponding section corners.
- 26 Aug 1893 -Nobles County Recorder's Office, Surveyor's Record, Volume A-2, Page 126-127 by Milton S. Smith, County Surveyor, for a survey of the Sections 25 & 36, shows an iron bolt witness corner 9.50 chs south of the E 1/4 corner, a distance of south 2650.6' to the corresponding section corner.
- Undated -Nobles County Highway Department records show there is no record of the corner.
- 6 Jan 2006 -Zieske Land Surveying, Inc., Project No. N 0514 S, for a survey in Section 25, states "East 1/4 Cor. Sec. 25-102-40 iron monument below bit. surface.
- 27 June 2007 -Bolton & Menk, Inc., survey crew found a spike in the centerline of County Road No. 5 and very close to being online with the NE and SE section corners, said spike is in agreement with the above referenced Zieske survey. Bolton & Menk, Inc. set a PLS Mndot Cap on a 30" Unistrut in place of said spike. Distances of north 2638.12' and south 2651.55' were measured to the corresponding section corners.
- *Upon reviewing the 1891 Smith surveys it appears smith distances between the NW and W 1/4 corners of Section 30 was measured to the witness monument 9.5 lks south of the corner. The east - west 1/4 line in Section 30 also may have been mistakenly laid out using said witness monument, as the occupational evidence along the east - west 1/4 line in section 30 is some 40+ feet south of this position
- The written evidence is weak and not conclusive as to the true corner location, however, the measurement data from the 1891, 1893 & 2007 between the E 1/4 and SE corners are agreeable considering the time span therefore, the above spike (now PLS Mndot monument) is the best evidence as to the true corner location. Additional information regarding the preparation of this certificate can be obtained by contacting: Bolton & Menk, Inc., 219 North Main Street, Fairmont, MN 56013.