

# CERTIFICATE OF LOCATION OF GOVERNMENT CORNER

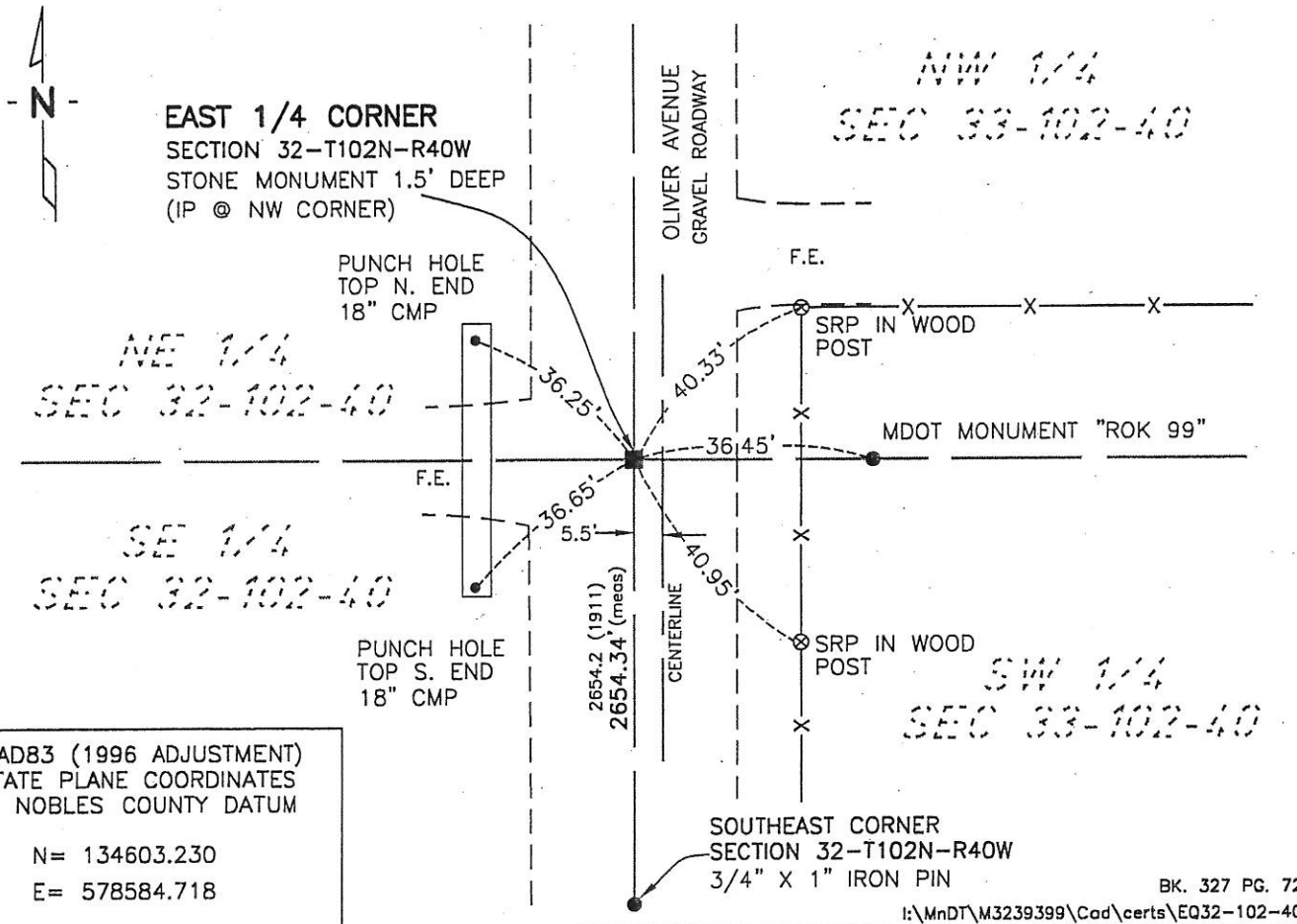
EAST 1/4 Corner of Section 32, Township 102, Range 40, 5th P.M.

STATE OF MINNESOTA, County of NOBLES

At the corner location shown on the sketch:

- On 5-9-07 found a RED GRANITE STONE MONUMENT (1.50' DEEP)  
DATE
- left monument as found,  lowered monument,  removed monument (explain)
- On 5-9-07 placed a 3/4" IRON PIPE AT NW CORNER OF STONE  
DATE

### SKETCH OF REFERENCE TIES



Statement of evidence relative to this corner location is on back of page.

I hereby certify that this document and the data contained herein was prepared by me or under my direct supervision.

Joseph A. Haefner  
JOSEPH A. HAEFNER  
6-25-2007  
DATE

Registration No. 43909

- Land surveyor,  Professional Engineer
- County Surveyor,  County Engineer

### OFFICE OF THE COUNTY RECORDER

County of \_\_\_\_\_

I hereby certify that this document was filed in the Co. Recorders office at \_\_\_\_M. on the \_\_\_\_\_ day of \_\_\_\_\_ A.D., 20\_\_\_\_

County Recorder \_\_\_\_\_

By \_\_\_\_\_, Deputy

DOCUMENT NO. \_\_\_\_\_

Statement of Evidence

East Quarter Corner Section 32, Township 102 North, Range 40 West

1868 -George G. Howe, U.S. Deputy Surveyor, his notes read: "North between sections 32 & 33, Var. 11°15'E" @ 40.00 chs "set post in mound with pits for 1/4 section corner", no ties

27 Apr 1911

-Nobles County Recorder's Office, Surveyor's Record, Volume B, Page 12, by William A. Saxon, County Surveyor, for a survey of the Section 32 states "set the stone monument at the 1/4 corner on East line" distances of north 2654.2' and south 2654.2' are shown to the corresponding section corners.

No Date

-Nobles County Recorder's Office, Surveyor's Record, Volume B, Page 183, by G.D. McMurty, County Surveyor, for a survey of Section 33 states "This survey was made for the purpose getting the fence lines about where they belong measurements were not taken" a stone is shown with distances of north 2652.5' and south 2652.5' to the corresponding section corners.

1937

Nobles County Highway Department records state that a stone was found, at this corner.

9 May 2007

-Bolton & Menk, Inc., survey crew found a red granite stone 1.5' feet below gravel surface and set a 3/4" Iron pipe at the northwest corner of the stone. A distance of south 2654.34' was measured to the corresponding section corner.

The evidence is conclusive back to the 1911 survey by Saxon and the measurement data from 1911 and 2007 are in agreement considering the time span; therefore I accept this as the true corner location. Additional information regarding the preparation of this certificate can be obtained by contacting: Bolton & Menk, Inc., 219 North Main Street, Fairmont, MN 56013.