

CERTIFICATE OF LOCATION OF GOVERNMENT CORNER

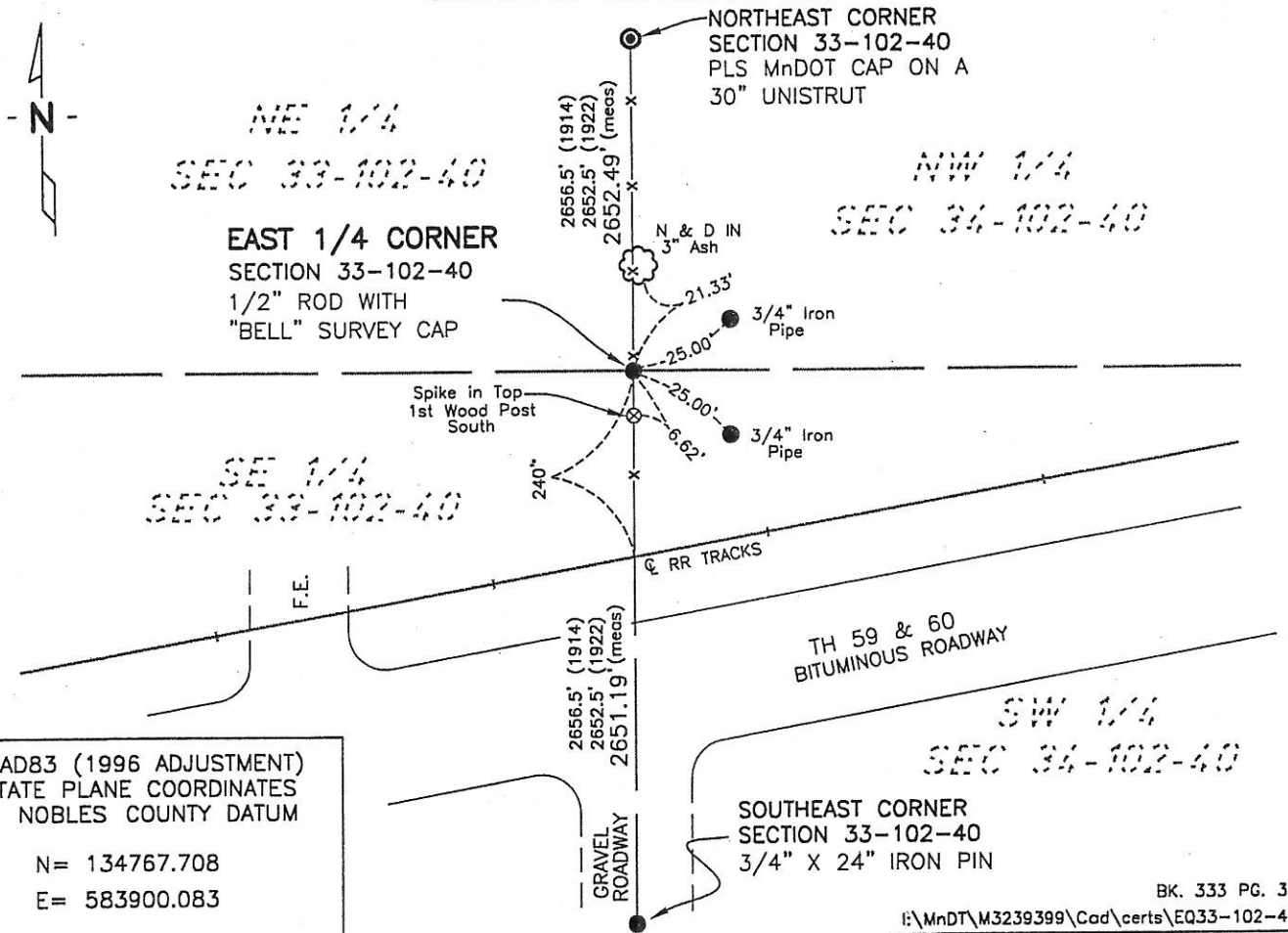
EAST 1/4 Corner of Section 33, Township 102, Range 40, 5th P.M.

STATE OF MINNESOTA, County of NOBLES

At the corner location shown on the sketch:

- On 6-22-07 found a 1/2" ROD WITH PLASTIC BELL SURVEY CAP
DATE
- left monument as found, lowered monument, removed monument (explain)
- On _____ DATE

SKETCH OF REFERENCE TIES



Statement of evidence relative to this corner location is on back of page.

I hereby certify that this document and the data contained herein was prepared by me or under my direct supervision.

Joseph A. Haefner
JOSEPH A. HAEFNER
DATE 6-28-2007

Registration No. 43909

- Land surveyor, Professional Engineer
- County Surveyor, County Engineer

OFFICE OF THE COUNTY RECORDER

County of _____

I hereby certify that this document was filed in the Co. Recorders office at _____ M. on the _____ day of _____ A.D., 20____

County Recorder _____

By _____, Deputy

DOCUMENT NO. _____

East Quarter Corner Section 33, Township 102 North, Range 40 West

- 1868 -George G. Howe, U.S. Deputy Surveyor, his notes read: "North between sections 33 & 34, Var. 11°15'E" @ 40.00 chs "set post in mound with pits for quarter section corner", no ties
- 20 July 1914 -Nobles County Recorder's Office, Surveyor's Record, Volume B, Page 57 by William A. Saxon, County Surveyor, for a survey of Section 34, shows distances of north 2656.5' and south 2656.5' to the corresponding section corners.
- 15 Mar. 1922 -Nobles County Recorder's Office, Surveyor's Record, Volume B, Page 132, for a survey of Section 34 shows a "Stone" at the west 1/4 corner, distances of north 2652.5' and south 2652.5' are shown to the corresponding section corners.
- 1978 -Nobles County Highway Department records show that Martin Land Surveying found an iron rod, at this corner. The rod had the following ties:
Nail & Disk in Power Pole - 24.25' NNW
Nail & Disk in Power Pole - 103.45' SSW
Nail & Disk in Power Pole - 93.88' SSE
Centerline Railroad - 239.67' S
- 14 Dec 1987 -Bell Surveying Inc., Survey Job No. 87011, for a survey in Section 34, shows the W 1/4 (E 1/4 Section 33) was found. There is no mention of what type of monumentation exists.
- 14 Dec 1993 -Madsen Land Surveying Inc., Survey File No. 93165, for a survey in Section 34, shows a found rod with surveyors cap (at surface) at the W 1/4 Corner (E 1/4 Section 33)
- 20 July 2006 -Minnesota Department of Transportation, survey crew found a 1/2" rod with Bell Survey Cap.
- 28 June 2007 -Bolton & Menk, Inc., survey crew found an iron shaft w/ "Bell" surveyors cap. Distances of north 2652.49' and south 2651.19' were measured to the corresponding section corners.
- The written evidence shows a large gap of unrecorded and unavailable information about this corner location between 1914 and 1978, however the occupational and collateral evidence along with the fact that the measurement data from the 1922 & 2007 are close considering the time span therefore, this is a reasonable location as to the corner. Additional information regarding the preparation of this certificate can be obtained by contacting: Bolton & Menk, Inc., 219 North Main Street, Fairmont, MN 56013