

CERTIFICATE OF LOCATION OF GOVERNMENT CORNER

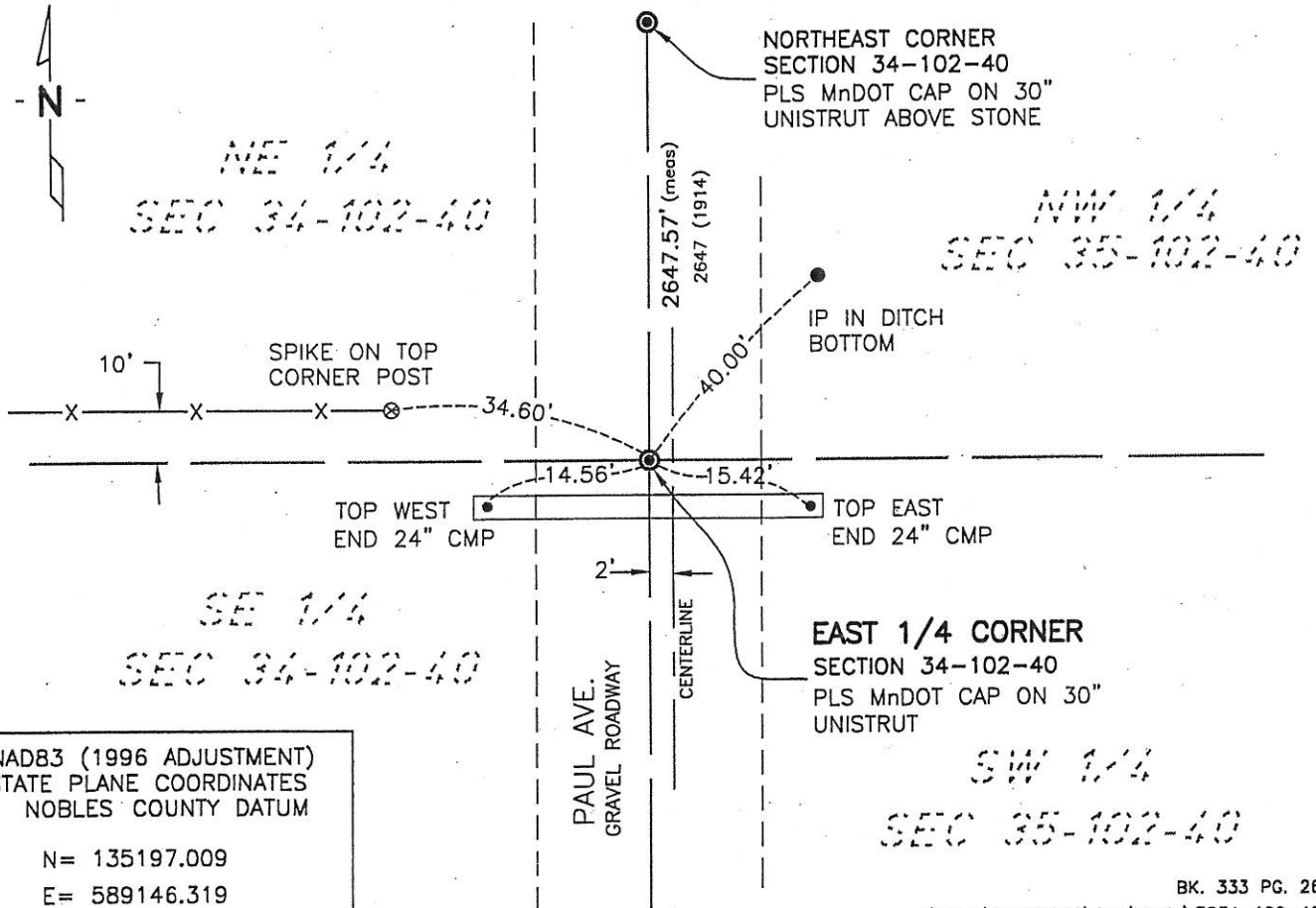
EAST 1/4 Corner of Section 34, Township 102, Range 40, 5th P.M.

STATE OF MINNESOTA, County of NOBLES

At the corner location shown on the sketch:

- On 6-6-07 found a GEARSHAFT 8" BELOW SURFACE 2' WEST OF CENTERLINE
DATE
ROAD & 10' SOUTH OF FENCE LINE TO WEST (Removed during excavation)
 left monument as found, lowered monument, removed monument (explain)
- On 6-22-07 placed a PLS MnDOT CAP ON 30" UNISTRUT IN PLACE
DATE
OF GEAR SHAFT

SKETCH OF REFERENCE TIES



NAD83 (1996 ADJUSTMENT)
STATE PLANE COORDINATES
NOBLES COUNTY DATUM

N= 135197.009
E= 589146.319

BK. 333 PG. 26
i:\Mndt\M3239399\Cad\certs\EQ34-102-40

Statement of evidence relative to this corner location is on back of page.

I hereby certify that this document and the data contained herein was prepared by me or under my direct supervision.

Joseph A. Haefner
JOSEPH A. HAEFNER
6-25-2007
DATE

Registration No. 43909

- Land surveyor, Professional Engineer
- County Surveyor, County Engineer

OFFICE OF THE COUNTY RECORDER

County of _____

I hereby certify that this document was filed in the Co. Recorders office at ____M. on the _____ day of _____ A.D., 20__

County Recorder _____

By _____, Deputy

DOCUMENT NO. _____

Statement of Evidence

East Quarter Corner Section 34, Township 102 North, Range 40 West

- 1868 -George G. Howe, U.S. Deputy Surveyor, his notes read: "North between sections 34 & 35, Var. $11^{\circ}15'E$ " @ 40.00 chs "set post in mound with pits for quarter section corner", no ties
- 20 July 1914 -Nobles County Recorder's Office, Surveyor's Record, Volume B, Page 57, by William A. Saxon, County Surveyor, for a survey of Section 34 shows an "Iron Shaft 1" x 24" at this corner with distances of north 2647' and south 2647' to the corresponding section corners.
- 9 June 1952 -Nobles County Recorder's Office, Surveyor's Record, Volume B, Page 206, by the County Surveyor, for a survey of Section 34 shows a "Iron Rod" 10 feet south of a fence running west, no other distances are shown.
- 1963 Nobles County Highway Department records show an iron pin found at this corner. The iron pin had the following ties:
Spike in Top of Cor Fence Post 34.00' NW
Spike in TP – 84.50' SW
West Fence – 10' N
- 20 July 2006 -Minnesota Department of Transportation, survey crew found a gear shaft 2' west of centerline gravel roadway, 8" deep and 10' south of a fence running west.
- 9 May 2007 -Bolton & Menk, Inc., survey crew survey crew found the above referenced gear shaft, (gear shaft measures 1" x 36" long) distances of north 2647.57' was measured to the corresponding section corner. Bolton & Menk, Inc., survey crew excavated the area with a backhoe and found no other evidence of the corner (gear shaft was removed during excavation)
- 22 June 2007 -Bolton & Menk, Inc., survey crew set a PLS MnDot Cap on a 30" Unistrut at the above referenced gear shaft location.

The evidence is not conclusive as to the true corner location and there is nothing that ties gear shaft in 2006 to any previous survey, however the measurement data from 1914, and 2007 are in reasonable agreement considering the time span and the location of the fence running west suggests that this is a reasonable location as to the corner. Additional information regarding the preparation of this certificate can be obtained by contacting: Bolton & Menk, Inc., 219 North Main Street, Fairmont, MN 56013.