

CERTIFICATE OF LOCATION OF GOVERNMENT CORNER

C 14 CORNER OF SECTION 26 TOWNSHIP, 102N RANGE, 41W 5TH P.M.

STATE OF MINNESOTA, COUNTY OF NOBLES

AT THE CORNER LOCATION SHOWN ON THE SKETCH

ON 8/7/18 FOUND A 6" x 6" STONE AT SURFACE
WITH STEEL FENCE POST MARKING THE STONE

LEFT MONUMENT AS FOUND LOWERED MONUMENT REMOVED MONUMENT (EXPLAIN)

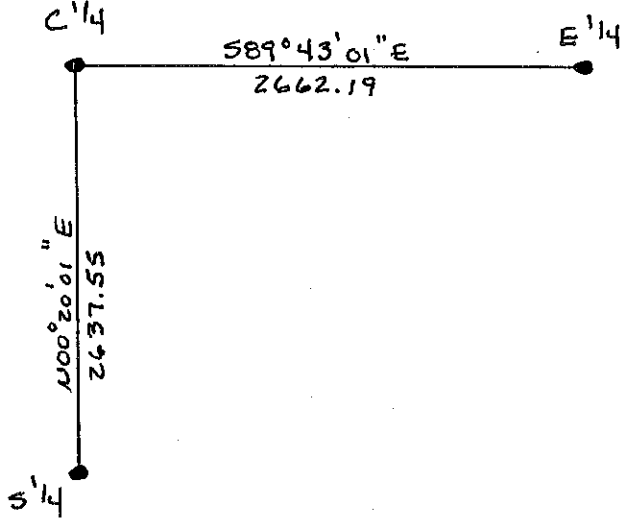
ON _____ PLACED A _____

SECTION CORNER COORDINATES

NORTHING 139,965.60
EASTING 559,857.23

SKETCH OF REFERENCE

NOBLES County COORDINATE SYSTEM



COORDINATES ARE NAD '83 US STATE PLANE MINNESOTA SOUTH

Table with 2 columns: NGS BENCHMARK I.D., NORTHING, EASTING.

STATEMENT OF EVIDENCE RELATIVE TO THIS CORNER LOCATION IS ON PAGE 2.

I HEREBY CERTIFY THAT THIS DOCUMENT AND THE DATA CONTAINED HEREIN WAS PREPARED BY ME OR UNDER MY DIRECT SUPERVISION.

Signature of Steve B. Kor

DATE 10/19/18

MN. LICENSE NO. 22461

LAND SURVEYOR PROFESSIONAL ENGINEER
 COUNTY SURVEYOR COUNTY ENGINEER

OFFICE OF THE COUNTY RECORDER

I HEREBY CERTIFY THAT THIS DOCUMENT WAS FILED IN THE COUNTY RECORDERS OFFICE

AT _____ ON THE _____ DAY OF _____

COUNTY RECORDER _____

BY _____ DEPUTY

DOCUMENT NO. _____