

CERTIFICATE OF LOCATION OF GOVERNMENT CORNER

EAST 1/4 Corner of Section 14, Township 102N, Range 41W, 5TH P.M.

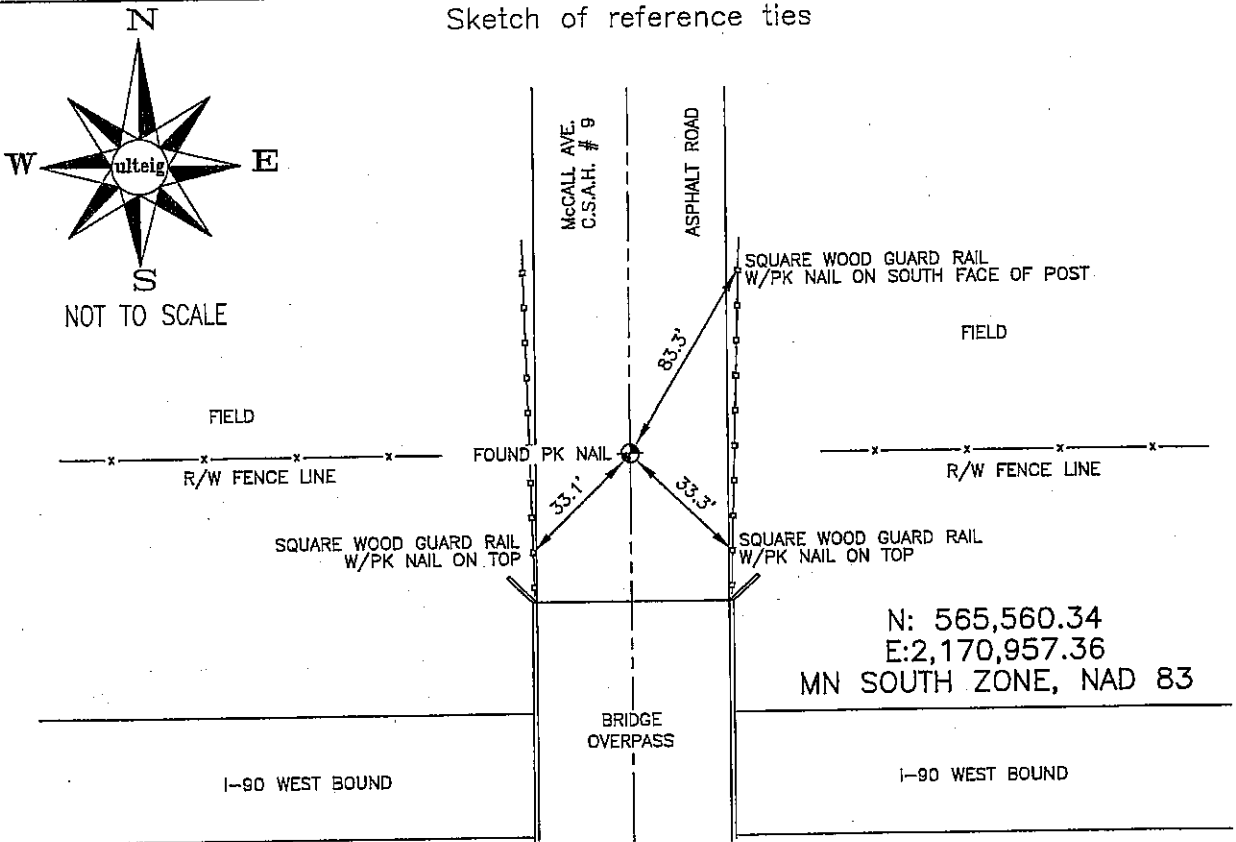
STATE OF MINNESOTA, County of NOBLES

At the corner location shown on the sketch :

On 3/06/2006 found PK NAIL IN C/L OF ASPHALT PAVEMENT,
OPPOSITE R/W FENCES, RUNNING EAST & WEST.
 left monument as found, lowered monument, removed monument (explain)

On _____ set _____

Sketch of reference ties



Statement of evidence relative to this corner location is on back page

I hereby certify that this document and the data contained herein was prepared by me or under my direct supervision.

Thomas V. Zepf
Thomas V. Zepf

5/16/05
Date

Registration No. 44563

Land Surveyor, Professional Engineer

County Surveyor, County Engineer

OFFICE OF THE COUNTY RECORDER

County of _____

I hereby certify that this document was filed in the Co. Recorders office at _____ .M. on the day of _____ A.D. , 20

County Recorder _____

By _____, Deputy

DOCUMENT NO. _____

STATEMENT OF EVIDENCE:

EAST 1/4 CORNER, SECTION 14, T. 102 N., R. 41 W.,
NOBLES COUNTY, MINNESOTA

- 1868 Jewett & Howe, US. Deputy Surveyors, monumented corner.
- 1963 MN DOT R/W Map for I-90, calls for an Iron pipe over a 1"X2" wood stake at the 1/4 corner.
- 3/06/2006 Ulteig Engineers, Inc., Survey Crew, Dennis Lavallie Party Chief, found a PK nail in the C/L of asphalt pavement, in line with the R/W fences, running east & west.
Ties: NE-83.3' to PK nail in S face of square, wood, guard rail post;
SE-33.3' to PK nail on top, of square, wood, guard rail post;
SW-33.1' to PK nail on top, of square, wood, guard rail post.