

STATEMENT OF EVIDENCE:

EAST 1/4 CORNER, SECTION 2, T. 102 N., R. 41 W.,
NOBLES COUNTY, MINNESOTA

- 1868 Jewett & Howe, US. Deputy Surveyors, monumented corner.
- 3/06/2006 Ulteig Engineers, Inc. Survey Crew, Dennis Lavallie, Party Chief, found a rebar with an unreadable cap, 1" below grade, in the C/I of the asphalt pavement.
Ties: NE-49.1' to PK nail in SW side of wood, power pole;
SW-47.3' to steel, mail box, post;
NW-62.6' to PK nail in N side of wood, power pole;
N-2552.86' to NE corner, Section 2;
S-2656.90' to SE corner, Section 2.

CERTIFICATE OF LOCATION OF GOVERNMENT CORNER

WEST 1/4 Corner of Section 2, Township 102N, Range 41W, 5TH P.M.

STATE OF MINNESOTA, County of NOBLES

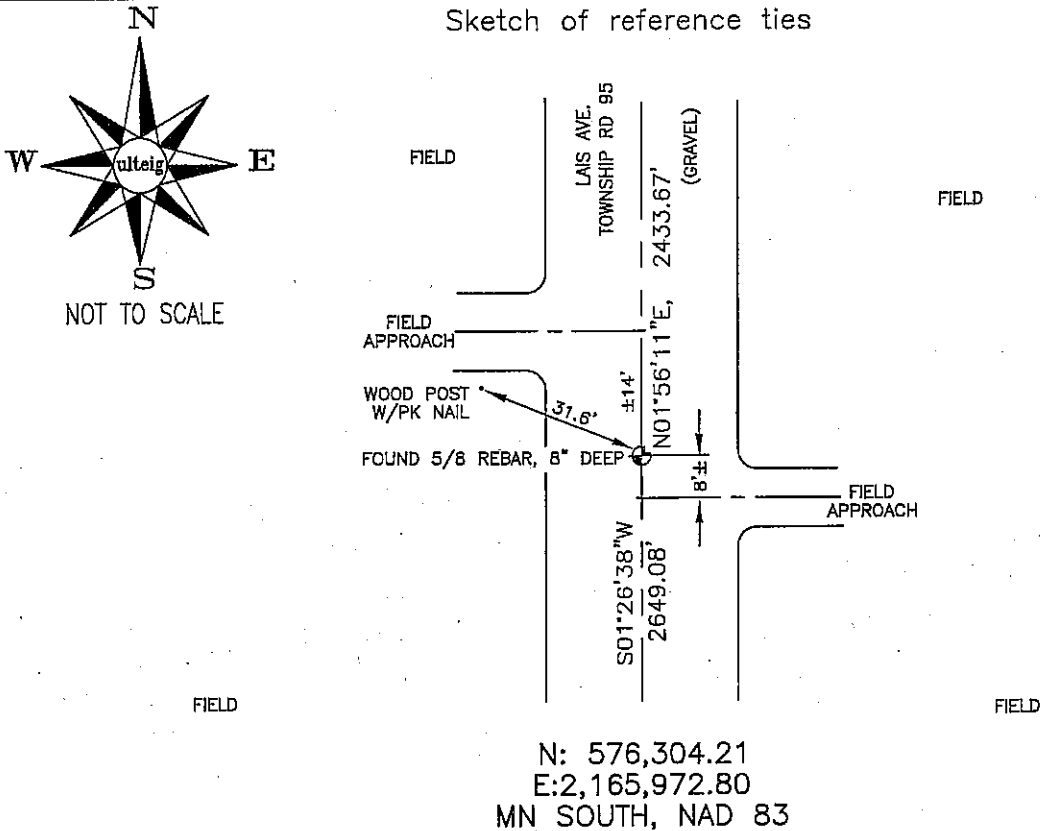
At the corner location shown on the sketch :

On 3/06/2006 found 5/8" REBAR, 8" DEEP, IN C/L OF GRAVEL RD.

left monument as found, lowered monument, removed monument (explain)

On _____ set _____

Sketch of reference ties



N: 576,304.21
E: 2,165,972.80
MN SOUTH, NAD 83

Statement of evidence relative to this corner location is on back page

I hereby certify that this document and the data contained herein was prepared by me or under my direct supervision.

Thomas V. Zepf 5/15/2006
Thomas V. Zepf Date

Registration No. 44563

Land Surveyor, Professional Engineer

County Surveyor, County Engineer

OFFICE OF THE COUNTY RECORDER

County of _____

I hereby certify that this document was filed in the Co. Recorders office at _____ .M. on the day of _____ A.D. , 20

County Recorder _____

By _____ , Deputy

DOCUMENT NO. _____

STATEMENT OF EVIDENCE:

WEST 1/4 CORNER, SECTION 2, T. 102 N., R. 41 W.,
NOBLES COUNTY, MINNESOTA

- 1867 Jewett & Howe, US. Deputy Surveyors, monumented corner.
- 1897 Nobles Co. set stone on corner, no ties.
- 3/06/2006 Ulteig Engineers, Inc., Survey Crew, Dennis Lavallie, Party Chief,
found a 5/8" rebar, 8" deep, in the C/L of the gravel road.
Ties: NW-31.6' to PK nail in N side of wood, power pole;
N-2433.67' to NW corner, Section 2;
S-2649.08' to SW corner, Section 2.

CERTIFICATE OF LOCATION OF GOVERNMENT CORNER

SOUTHWEST Corner of Section 2, Township 102N, Range 41W, 5TH P.M.

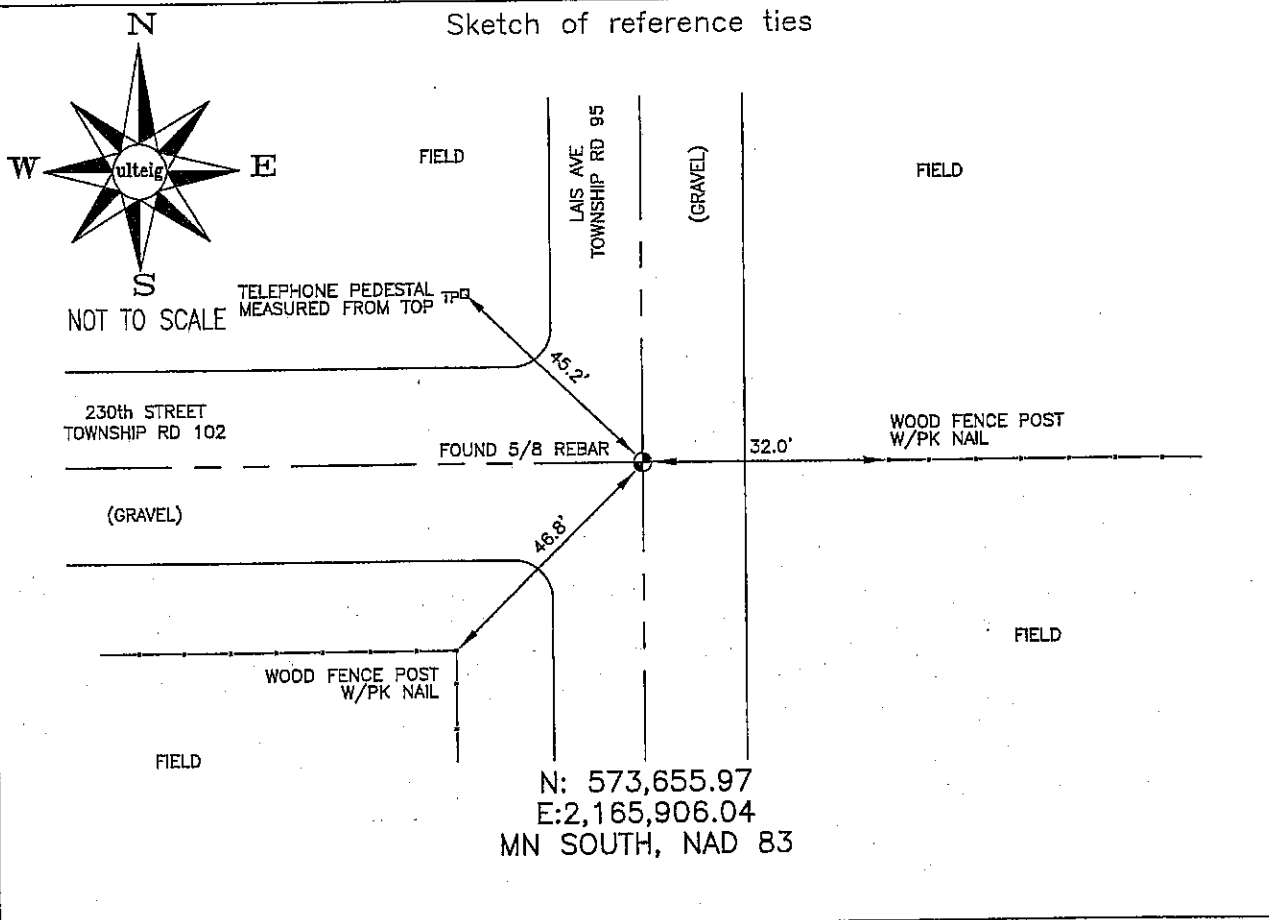
STATE OF MINNESOTA, County of NOBLES

At the corner location shown on the sketch :

On 3/06/2006 found 5/8" REBAR, 8" DEEP, AT INTERSECTION,
3'± NORTH FROM C/L OF WEST ROAD.

left monument as found, lowered monument, removed monument (explain)

On _____ set _____



Statement of evidence relative to this corner location is on back page

I hereby certify that this document and the data contained herein was prepared by me or under my direct supervision.

Thomas V. Zeff 5/15/06
 Thomas V. Zeff Date
 Registration No. 44563

- Land Surveyor, Professional Engineer
 County Surveyor, County Engineer

OFFICE OF THE COUNTY RECORDER

County of _____

I hereby certify that this document was filed in the Co. Recorders office at _____ .M. on the _____ day of _____ A.D. , 20

County Recorder _____
 By _____, Deputy

DOCUMENT NO. _____

STATEMENT OF EVIDENCE:

SOUTHWEST CORNER, SECTION 2, T. 102 N., R. 41 W.,
NOBLES COUNTY, MINNESOTA

- 1868 Jewett & Howe, US. Deputy Surveyors, monumented corner.
- 1896 Nobles Co. found a stone, no ties.
- 1898 Nobles Co. found stone, no ties.
- 1937 Nobles Co. found a stake, no ties.
- 3/06/2006 Ulteig Engineers, Inc., Survey Crew, Dennis Lavallie Party Chief, found a 5/8" rebar, 8" deep, in the C/L of the north-south gravel road and 3'± south from the C/L of the gravel road running west.
Ties: E-32.0' to PK nail in W face of wood, fence post;
SW-46.8' to PK nail in NE face of wood, fence post;
NW-45.2' to top, center of telephone pedestal.

STATEMENT OF EVIDENCE:

WEST 1/4 CORNER, SECTION 11, T. 102 N., R. 41 W.,
NOBLES COUNTY, MINNESOTA

- 1868 Jewett & Howe, US. Deputy Surveyors, monumented corner.
- 1896 Nobles Co. found stone, no ties.
- 3/06/2006 Ulteig Engineers, Inc., Survey Crew, Dennis Lavallie Party Chief,
found a field stone, 10" deep, in the gravel road.
Set a 5/8" rebar with cap: RLS 44563 on top of stone.
Ties: NE-85.7' to PK nail in SW face of wood, power pole;
E-33.0' to PK nail in W face of wood, fence post;
SW-34.3' to top, center of telephone pedestal;
N-2649.75' to NW corner, Section 11;
S-2643.54' to SW corner, Section 11.

CERTIFICATE OF LOCATION OF GOVERNMENT CORNER

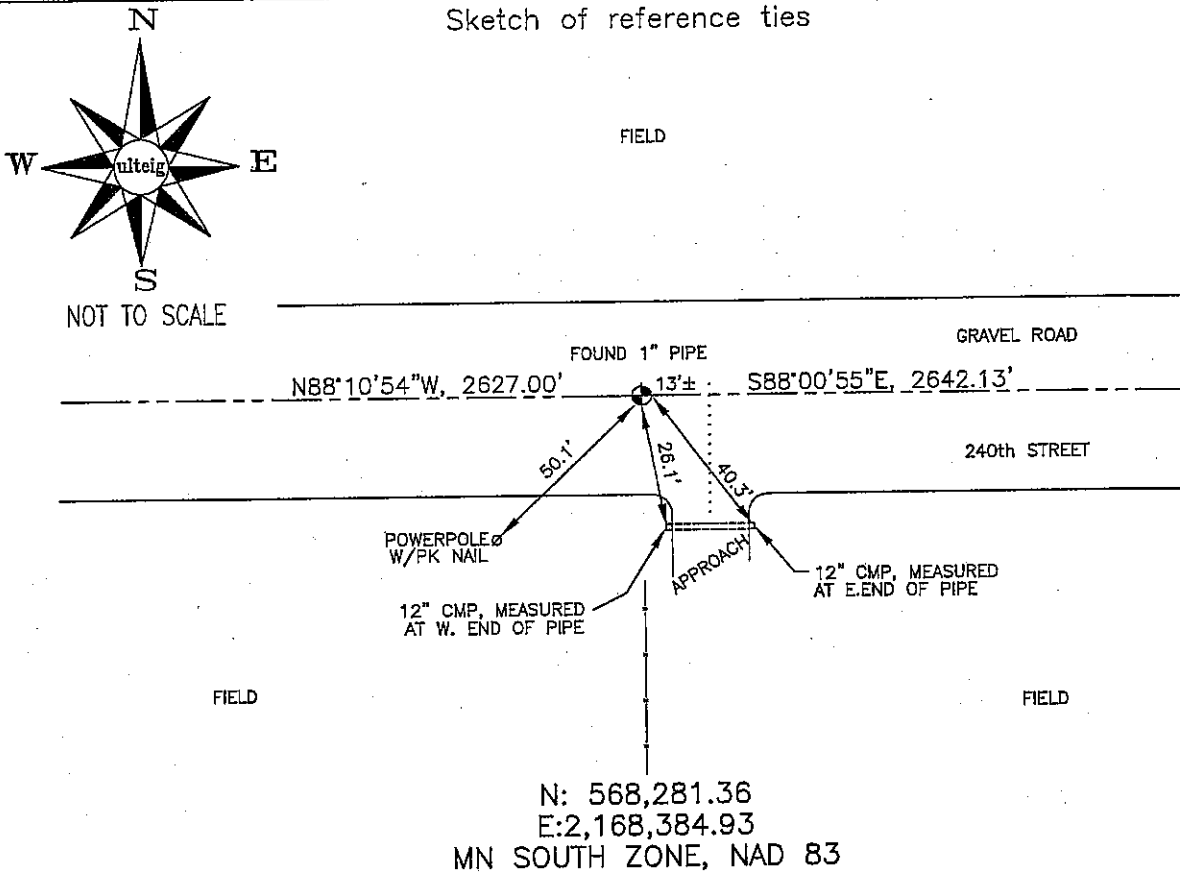
SOUTH 1/4 Corner of Section 11, Township 102N, Range 41W, 5TH P.M.

STATE OF MINNESOTA, County of NOBLES

At the corner location shown on the sketch :

- On 3/06/2006 found 1" IRON PIPE, 5" DEEP, IN GRAVEL ROAD,
OPPOSITE FENCE LINE RUNNING SOUTH.
 left monument as found, lowered monument, removed monument (explain)
 On _____ set _____

Sketch of reference ties



Statement of evidence relative to this corner location is on back page

I hereby certify that this document and the data contained herein was prepared by me or under my direct supervision.

Thomas V. Zeff 5/16/06
 Thomas V. Zeff Date
 Registration No. 44563

- Land Surveyor, Professional Engineer
 County Surveyor, County Engineer

OFFICE OF THE COUNTY RECORDER

County of _____

I hereby certify that this document was filed in the Co. Recorders office at _____ .M. on the _____ day of _____ A.D. , 20

County Recorder _____
 By _____, Deputy

DOCUMENT NO. _____

STATEMENT OF EVIDENCE:

SOUTH 1/4 CORNER, SECTION 11, T. 102 N., R. 41 W.,
NOBLES COUNTY, MINNESOTA

- 1868 Jewett & Howe, US. Deputy Surveyors, monumented corner.
- 1896 Nobles Co. found stone, no ties.
- 1959 Nobles Co. found stone, placed iron pin on top of stone.
Ties: NW-36.25' to gate post
SW-32.4' to corner of post
SE-60.29' to fence post.
- 3/06/2006 Ulteig Engineers, Inc., Survey Crew, Dennis Lavallie Party Chief,
found a 1" iron pipe, 5" deep, in the C/L of the gravel road,
opposite a fence line running south.
Ties: E-13'± to C/L of field approach;
SE-40.3' to top, E. end of 12" C.M.P.;
SE-26.1' to top, W. end of 12" C.M.P.;
SW-50.1' to PK nail in NE face of wood, power pole;
E-2642.13' to SE corner, Section 11;
W-2627.00' to SW corner, Section 11.

CERTIFICATE OF LOCATION OF GOVERNMENT CORNER

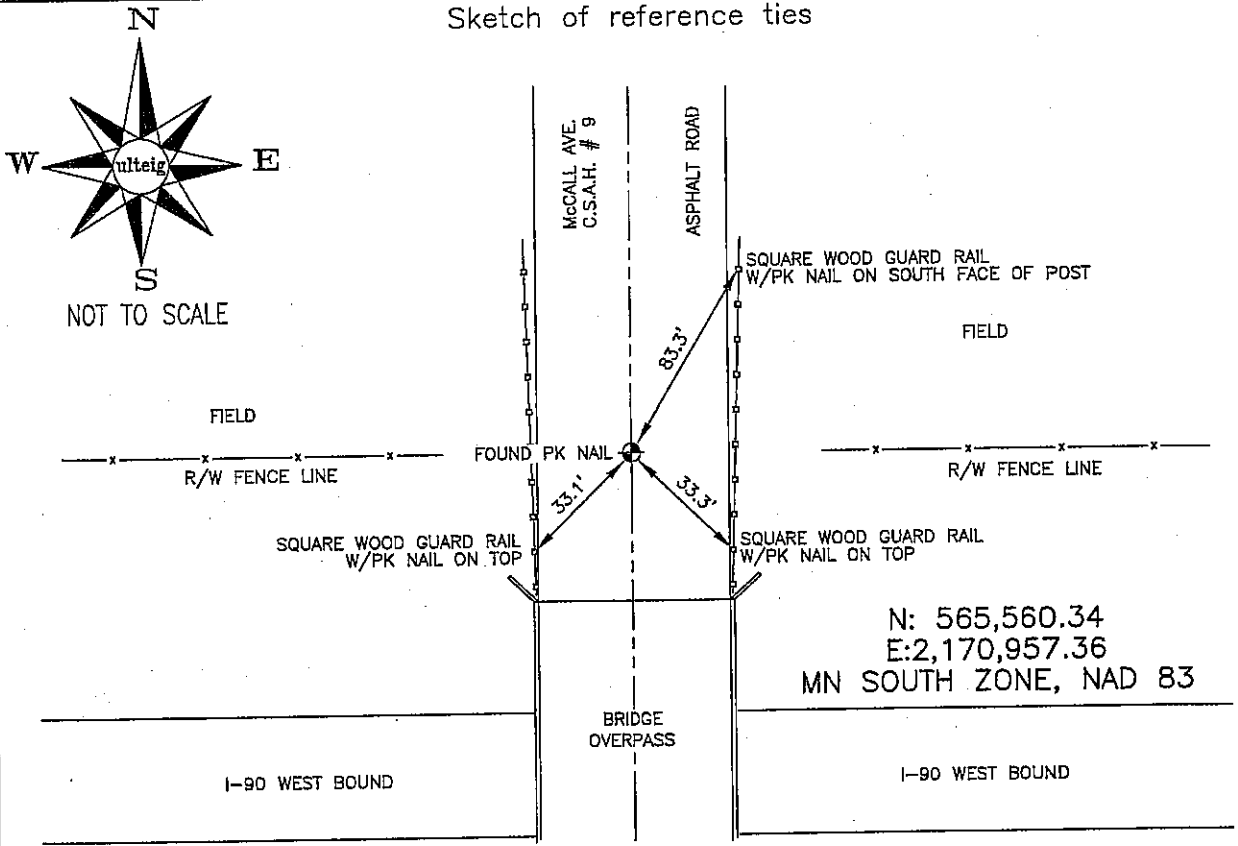
EAST 1/4 _____ Corner of Section 14, Township 102N, Range 41W, 5TH P.M.

STATE OF MINNESOTA, County of NOBLES

At the corner location shown on the sketch :

- On 3/06/2006 found PK NAIL IN C/L OF ASPHALT PAVEMENT,
OPPOSITE R/W FENCES, RUNNIG EAST & WEST.
- left monument as found, lowered monument, removed monument (explain)
- On _____ set _____

Sketch of reference ties



Statement of evidence relative to this corner location is on back page

I hereby certify that this document and the data contained herein was prepared by me or under my direct supervision.

Thomas V. Zell 5/16/05
 Thomas V. Zell Date
 Registration No. 44563

- Land Surveyor, Professional Engineer
- County Surveyor, County Engineer

OFFICE OF THE COUNTY RECORDER

County of _____

I hereby certify that this document was filed in the Co. Recorders office at _____ .M. on the day of _____ A.D. , 20

County Recorder _____
By _____, Deputy

DOCUMENT NO. _____

STATEMENT OF EVIDENCE:

EAST 1/4 CORNER, SECTION 14, T. 102 N., R. 41 W.,
NOBLES COUNTY, MINNESOTA

- 1868 Jewett & Howe, US. Deputy Surveyors, monumented corner.
- 1963 MN DOT R/W Map for I-90, calls for an Iron pipe over a 1"X2" wood stake at the 1/4 corner.
- 3/06/2006 Ulteig Engineers, Inc., Survey Crew, Dennis Lavallie Party Chief, found a PK nail in the C/L of asphalt pavement, in line with the R/W fences, running east & west.
Ties: NE-83.3' to PK nail in S face of square, wood, guard rail post;
SE-33.3' to PK nail on top, of square, wood, guard rail post;
SW-33.1' to PK nail on top, of square, wood, guard rail post.

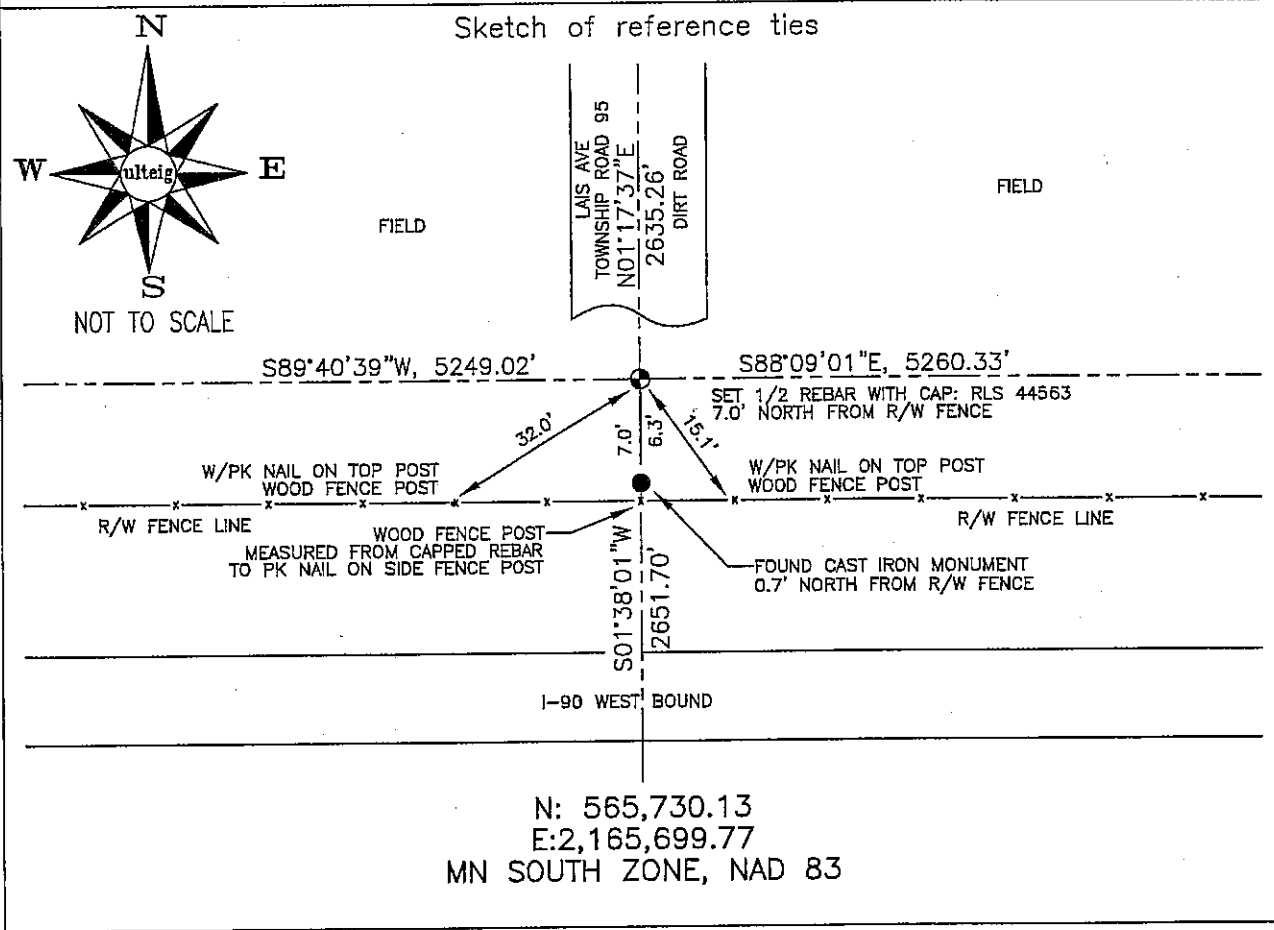
CERTIFICATE OF LOCATION OF GOVERNMENT CORNER

WEST 1/4 Corner of Section 14, Township 102N Range 41W 5TH P.M.

STATE OF MINNESOTA, County of NOBLES

At the corner location shown on the sketch :

- On _____ found _____
- left monument as found, lowered monument, removed monument (explain)
- On 3/07/2006 set A 5/8" REBAR WITH CAP: RLS 44563.



Statement of evidence relative to this corner location is on back page

I hereby certify that this document and the data contained herein was prepared by me or under my direct supervision.

Thomas V. Zell

 Thomas V. Zell
 Registration No. 44563

Land Surveyor, Professional Engineer
 County Surveyor, County Engineer

Date 5/16/06

OFFICE OF THE COUNTY RECORDER

County of _____

I hereby certify that this document was filed in the Co. Recorders office at _____ .M. on the _____ day of _____ A.D. , 20____

County Recorder _____
 By _____ , Deputy

DOCUMENT NO. _____

STATEMENT OF EVIDENCE:

WEST 1/4 CORNER, SECTION 14, T. 102 N., R. 41 W.,
NOBLES COUNTY, MINNESOTA

- 1868 Jewett & Howe, US. Deputy Surveyors, monumented corner.
- 1963 MN DOT R/W Map for I-90, calls for a spike in place at the 1/4 corner, at PI Sta 1936+78.23, with curve having a delta=02°10'30", a degree of curve=00°10' and an arc length=1305.0'.
- 3/07/2006 Ulteig Engineers, Inc., Survey Crew, Dennis Lavallie Party Chief, found a cast iron monument 6.3±' south, and rejected its location. Set a 5/8" rebar with cap: RLS 44563, so as to be in harmony with the MN DOT R/W Map for I-90, File #18-6, sheet 4 of 8. Monument found is believed to be a right-of-way monument.
Ties: S-7.0' to PK nail in wood, fence post;
SE-15.1' to PK nail on top of wood, fence post;
SW-32.0' to PK nail on top of wood, fence post;
N-2635.26' to NW corner, Section 14;
S-2651.70' to SW corner Section 14;
E-5260.33' to E 1/4 corner, Section 14;
W-5249.02' to W 1/4 corner, Section 15.

STATEMENT OF EVIDENCE:

WEST 1/4 CORNER, SECTION 17, T. 102 N., R. 41 W.,
NOBLES COUNTY, MINNESOTA

- 1868 JEWETT & HOWE, US. Deputy Surveyors, monumented corner.
- 1952 Nobles County found stone, placed wood stake; no ties.
- 1960 Nobles County found stake, placed iron pin; no ties.
- 1963 MN DOT R/W Map for I-90, shows corner found and being 100' north from C/L of I-90 survey line.
- 1980 Nobles County found iron pin.
Ties: NW-75.38' to 1"X2" stake on fence post;
NE-83.02' to 1"X2" stake on fence post;
SE-90.93' to 1"X2" stake on fence post.
- 3/08/2006 Ulteig Engineers, Inc., Survey Crew, Dennis Lavallie Party Chief, found nail in C/L 100.3' north from 1/4 corner; rejected its location.
Set 5/8" rebar with cap: RLS 44563 to agree with the MN DOT R/W Map for I-90, retracement location for said 1/4 corner.
Ties: NW-47.1' to PK nail in wood poer pole, SE side;
W-39.8' to PK nail in wood power pole, E side;
S-50.4' to PK nail in wood power pole, N side.

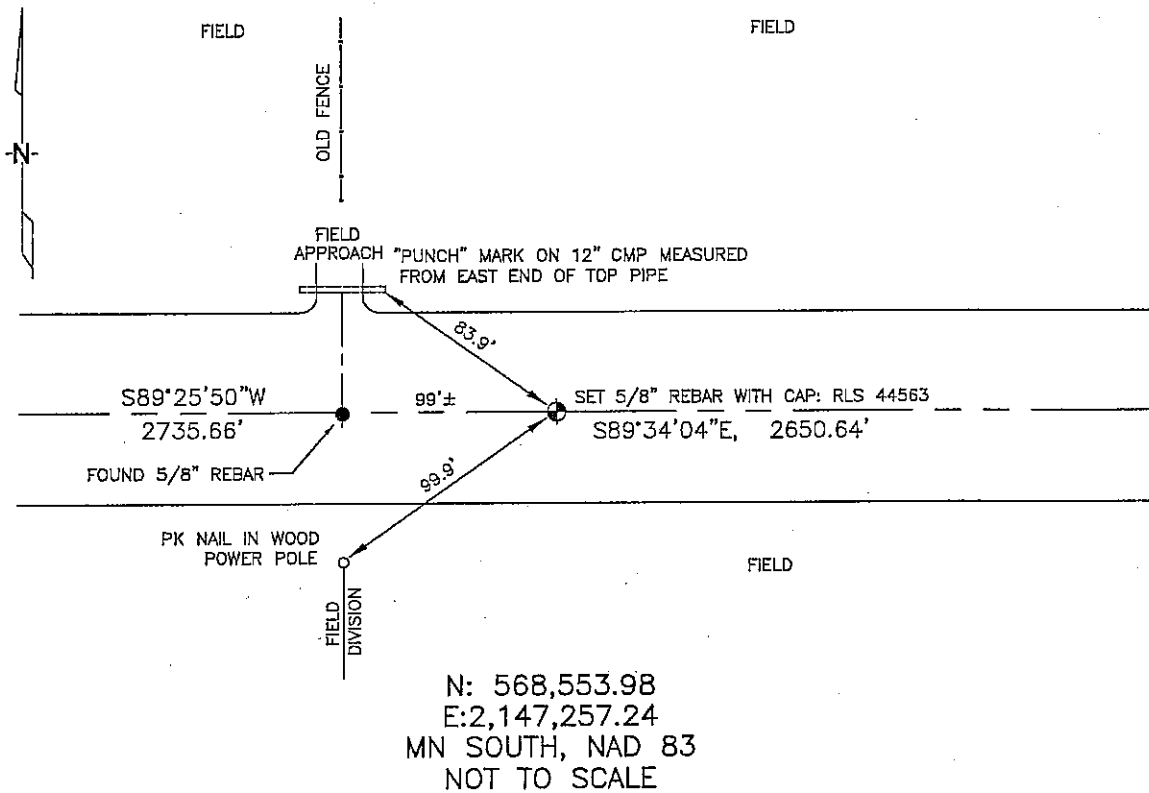
CERTIFICATE OF LOCATION OF GOVERNMENT CORNER

NORTH 1/4 Corner of Section 18, Township 102N, Range 41W, 5th P.M.
 STATE OF MINNESOTA, County of NOBLES

At the corner location shown on the sketch:


- On 3/08/2006 found a 5/8" REBAR 99'+/- WEST OF PROPORTION
DATE BETWEEN NE & NW CORNERS OF SECTION 18.
- left monument as found, lowered monument, removed monument (explain)
- On 3/08/2006 placed a 5/8" REBAR WITH CAP: RLS 44563.
DATE

SKETCH OF REFERENCE TIES



Statement of evidence relative to this corner location is on back of page.

I hereby certify that this document and the data contained herein was prepared by me or under my direct supervision.



 Thomas W. Zeff 8/11/06
DATE

- Registration No. 44563
- Land Surveyor, Professional Engineer
 - County Surveyor, County Engineer

OFFICE OF THE COUNTY RECORDER

County of _____

I hereby certify that this document was filed in the Co. Recorders office at _____ .M. on the _____ day of _____ A.D., 20____

County Recorder _____

By _____, Deputy

DOCUMENT NO. _____

STATEMENT OF EVIDENCE:

 N 1/4 CORNER, SECTION 18, T. 102 N., R. 41 W.,
 NOBLES COUNTY, MINNESOTA

1868 JEWETT & HOWE, US. Deputy Surveyors, monumented corner.

3/08/2006 Ulteig Engineers, Inc., Survey Crew, Dennis Lavallie Party Chief, found
a 5/8" rebar 99'± west of proportion between NE & NW corners.
Set a 5/8" rebar with cap: RLS 44563 at the proportional distance.
Ties: NW-83.9' to east end of a 12" cmp, punch mark on top of
 pipe;
 E-2650.64' to NE corner, Section 18;
 SW-99.9' to pk nail in wood power pole, up 36", NE side;
 W-2735.66' to NW corner, Section 18.

CERTIFICATE OF LOCATION OF GOVERNMENT CORNER

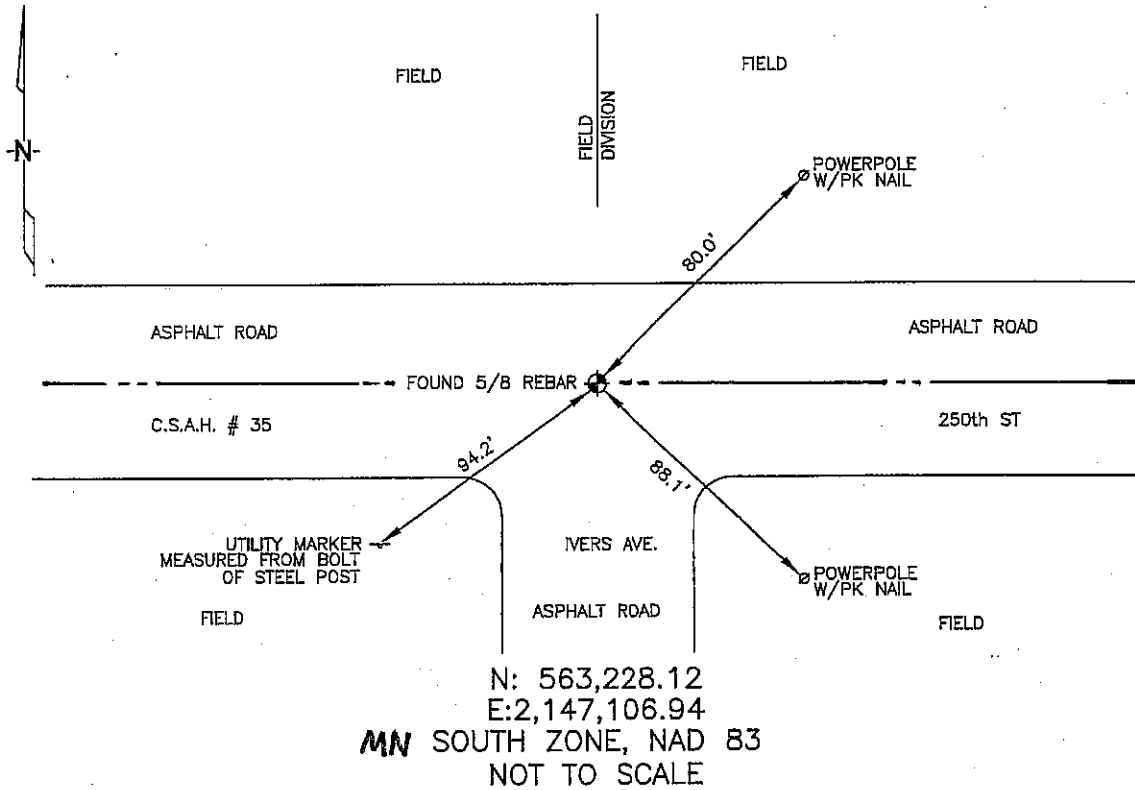
SOUTH 1/4 Corner of Section 18, Township 102N, Range 41W, 5th P.M.
 STATE OF MINNESOTA, County of NOBLES

At the corner location shown on the sketch:

On 3/23/2006 found a 5/8" REBAR, 1" DEEP, IN ASPHALT.
DATE

left monument as found, lowered monument, removed monument (explain)
 On _____ placed a _____
DATE

SKETCH OF REFERENCE TIES



Statement of evidence relative to this corner location is on back of page.

I hereby certify that this document and the data contained herein was prepared by me or under my direct supervision.

Thomas V. Jeff 5/15/06
Thomas V. Jeff DATE

Registration No. 44563

- Land Surveyor, Professional Engineer
 County Surveyor, County Engineer

OFFICE OF THE COUNTY RECORDER

County of _____

I hereby certify that this document was filed in the Co. Recorders office at _____ M. on the _____ day of _____ A.D., 20____

County Recorder _____

By _____, Deputy

DOCUMENT NO. _____

STATEMENT OF EVIDENCE:

SOUTH 1/4 CORNER, SECTION 18, T. 102 N., R. 41 W.,
NOBLES COUNTY, MINNESOTA

- 1868 Jewett & Howe, US. Deputy Surveyors, monumented corner.
- 1912 Nobles County Found an iron pin
- 1959 Nobles County found an brass plug
- 1973 Nobles County found an iron pin
- 3/07/2006 Ulteig Engineers, Inc., Survey Crew, Dennis Lavallie Party Chief,
found a 5/8" rebar in centerline of Hwy#35 and Ivers Ave.
- Ties: NE--80.00' to pk nail in wood power pole, up 36", next
to old ties, on NW side of pole.
SE--88.1' to pk nail in wood power pole, up 55", next to
old tie, on e side of pole.
SW--94.2' to head bolt in steel sign post.

CERTIFICATE OF LOCATION OF GOVERNMENT CORNER

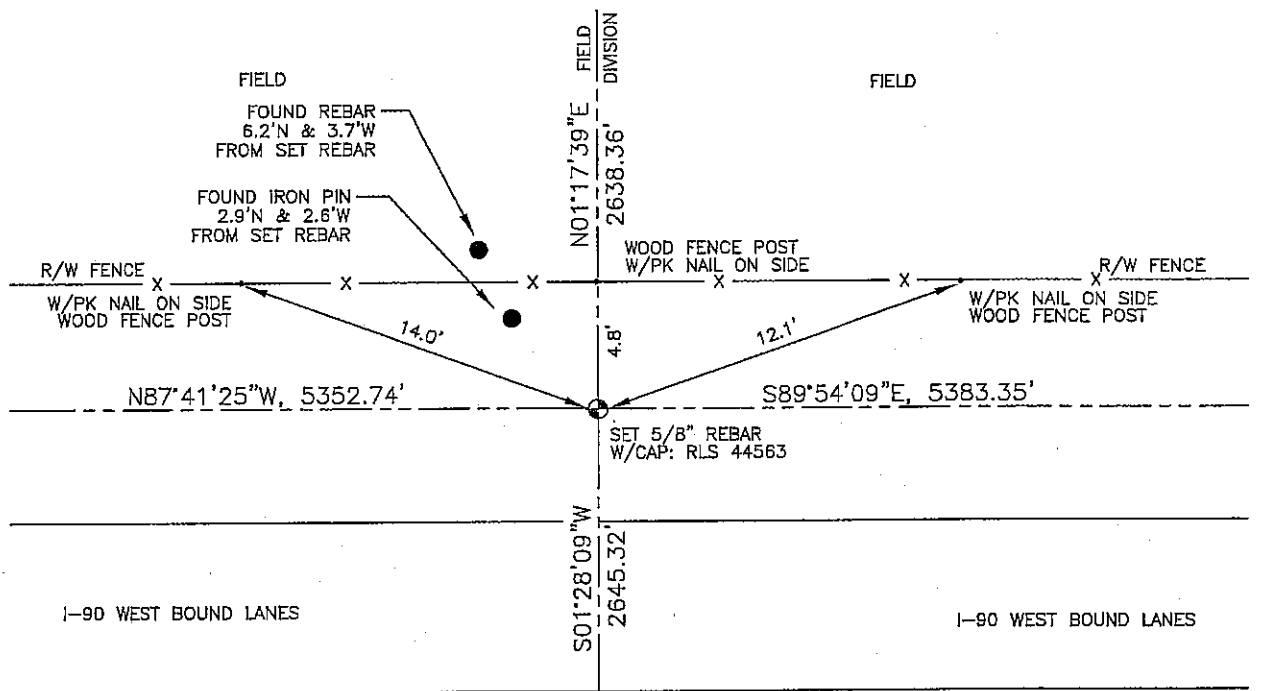
WEST 1/4 Corner of Section 18, Township 102, Range 41, 5TH P.M.

STATE OF MINNESOTA, County of NOBLES

At the corner location shown on the sketch :

- On 3/08/2006 found AN IRON PIN, 2.9'N & 2.3'W AND AN IRON REBAR, 6.2'N & 3.7'W FROM 1/4 CORNER.
- left monument as found, lowered monument, removed monument (explain)
- On 3/08/2006 set A 5/8" REBAR WITH CAP: RLS 44563 AT 1/4 CORNER.

Sketch of reference ties



N: 565,889.12
E: 2,144,462.12
MN SOUTH ZONE, NAD 83
NOT TO SCALE

Statement of evidence relative to this corner location is on back page

I hereby certify that this document and the data contained herein was prepared by me or under my direct supervision.

Thomas N. Zeff 8/11/06
 Thomas N. Zeff Date
 Registration No. 44563

- Land Surveyor, Professional Engineer
 County Surveyor, County Engineer

OFFICE OF THE COUNTY RECORDER

County of _____

I hereby certify that this document was filed in the Co. Recorders office at _____ M. on the day of _____ A.D., 20

County Recorder _____
 By _____, Deputy

DOCUMENT NO. _____

STATEMENT OF EVIDENCE:

WEST 1/4 CORNER, SECTION 18, T. 102 N., R. 41 W.,
NOBLES COUNTY, MINNESOTA

- 1867 T.B. Walker, US. Deputy Surveyor, monumented west range line.
- 1963 MN DOT R/W Map for I-90, File #18-6, sheet 8/10, calls for the 1/4 corner being at the intersection of the north-south road and the east-west fence line.
- 3/08/2006 Ulteig Engineers, Inc., Survey Crew, Dennis Lavallie Party Chief,
Set a 5/8" rebar with cap: RLS 44563 at 1/4 corner so as to be in harmony with the retracement location of said corner as per the MN DOT R/W Map for I-90.
Found an iron pin, 2.9' north and 2.6' west from set rebar.
Found another rebar 6.2' north and 3.7' west from set rebar.
Rejected locations of both found monuments.
Ties: N-4.8' to PK nail in wood fence post;
NE-12.1' to PK nail in wood fence post;
NW-14.0' fo PK nail in wood fence post;
N-2638.36' to NW corner, Section 18;
S-2645.32' to SW corner, Section 18;
E-5383.35' to E 1/4 corner, Section 18;
W-5352.74' to W 1/4 corner, Section 13, T102, R42W.

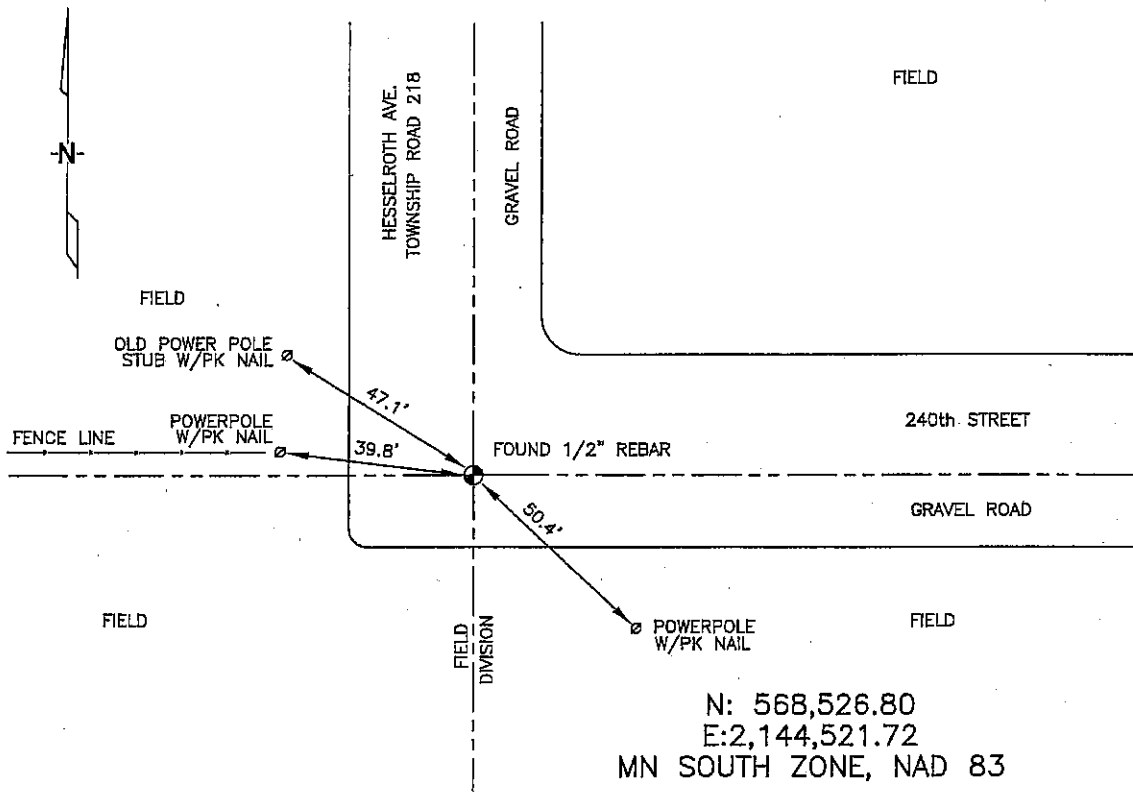
CERTIFICATE OF LOCATION OF GOVERNMENT CORNER

NORTHWEST Corner of Section 18, Township 102N, Range 41W, 5th P.M.
 STATE OF MINNESOTA, County of NOBLES

At the corner location shown on the sketch:

- On 3/08/2006 found a 1/2" REBAR, 1" DEEP, centerline of N road
DATE
- left monument as found, lowered monument, removed monument (explain)
- On _____ placed a _____
DATE

SKETCH OF REFERENCE TIES



Statement of evidence relative to this corner location is on back of page.

I hereby certify that this document and the data contained herein was prepared by me or under my direct supervision.

Thomas V. Zeff
 Thomas V. Zeff

5/23/06
 DATE

Registration No. 44563

- Land Surveyor, Professional Engineer
- County Surveyor, County Engineer

OFFICE OF THE COUNTY RECORDER

County of _____

I hereby certify that this document was filed in the Co. Recorders office at _____ M. on the _____ day of _____ A.D., 20_____

County Recorder _____

By _____, Deputy

DOCUMENT NO. _____

STATEMENT OF EVIDENCE:

NORTHWEST CORNER, SECTION 18, T. 102 N., R. 41 W.,
NOBLES COUNTY, MINNESOTA

1868 T.B WALKER, US. Deputy Surveyor, monumented corner.

3/08/2006 Ulteig Engineers, Inc., Survey Crew, Dennis Lavallie Party Chief,
found a 1/2" rebar, 1" down.

Ties: NW-47.1' to pk nail in wood power pole, SE side, up 16"
W-39.8' to pk nail in wood power pole, East side, up 18"
SE-50.4' to pk nail in wood power pole, North side, up 24"

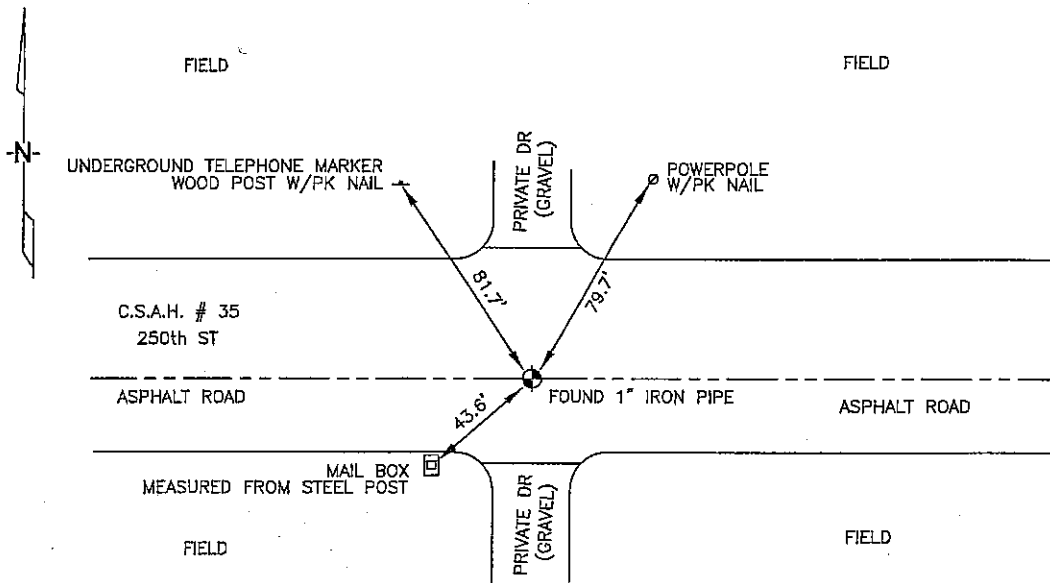
CERTIFICATE OF LOCATION OF GOVERNMENT CORNER

SOUTHWEST Corner of Section 18, Township 102N, Range 41W, 5th P.M.
 STATE OF MINNESOTA, County of NOBLES

At the corner location shown on the sketch:

- On 3/07/2006 found a 1" IRON PIPE IN ASPHALT PAVEMENT, OPPOSITE
DATE C/L OF PRIVATE DRIVE.
- left monument as found, lowered monument, removed monument (explain)
- On _____ placed a _____
DATE

SKETCH OF REFERENCE TIES



N: 563,244.67
 E: 2,144,394.30
 MN SOUTH ZONE, NAD 83
 NOT TO SCALE

Statement of evidence relative to this corner location is on back of page.

I hereby certify that this document and the data contained herein was prepared by me or under my direct supervision.

Thomas J. Zeff 8/11/06
Thomas J. Zeff DATE

Registration No. 44563

- Land Surveyor, Professional Engineer
- County Surveyor, County Engineer

OFFICE OF THE COUNTY RECORDER

County of _____

I hereby certify that this document was filed in the Co. Recorders office at _____ .M. on the _____ day of _____ A.D., 20_____

County Recorder _____

By _____, Deputy

DOCUMENT NO. _____

STATEMENT OF EVIDENCE:

SW CORNER, SECTION 18, T. 102 N., R. 41 W.,
NOBLES COUNTY, MINNESOTA

- 1868 T.B. WALKER, US. Deputy Surveyors, monumented corner.
- 1912 Nobles County Found an iron pin
- 1959 Nobles County found an brass plug
- 1963 MN DOT R/W Map for I-90, calls for a "brass plug" in place at section corner.
- 1973 Nobles County found an iron pin
- 3/07/2006 Ulteig Engineers, Inc., Survey Crew, Dennis Lavallie Party Chief, found a 1" iron pipe in centerline of private drive.
- Ties: NE-79.7' to pk nail in wood power pole, up 24", next to old ties, on E side of pole.
SW-43.6 to mailbox post, up 12"
NW-81.65' to pk nail in wood UGTCM, up 2.3', w side.